

5' splice site

-308
TGCTGGTGGG | **GT**AGGGATGA

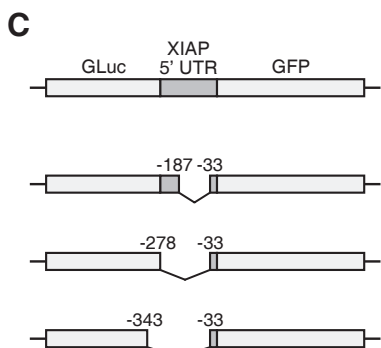
-342
GGGCCCCAGG | **GT**GTGCAGCC

-417
CCAGGGCCAA | **GT**CGATAAGA

-434
ACCTTCGCAA | **GCA**AGATCCA

3' splice site

-52
TTATAGCTTTCTTTCCCC**AG** | AT



5' splice site

-187
GAATGATGTG | **GT**AATGTCGA

-278
GTTTAAACGC | **GT**ATTAGTTT

-343
ACCTTCGCAA | **GCA**AGATCCA

3' splice site

-33
ATATAATGTTCTCTTTTT**AG** | AA