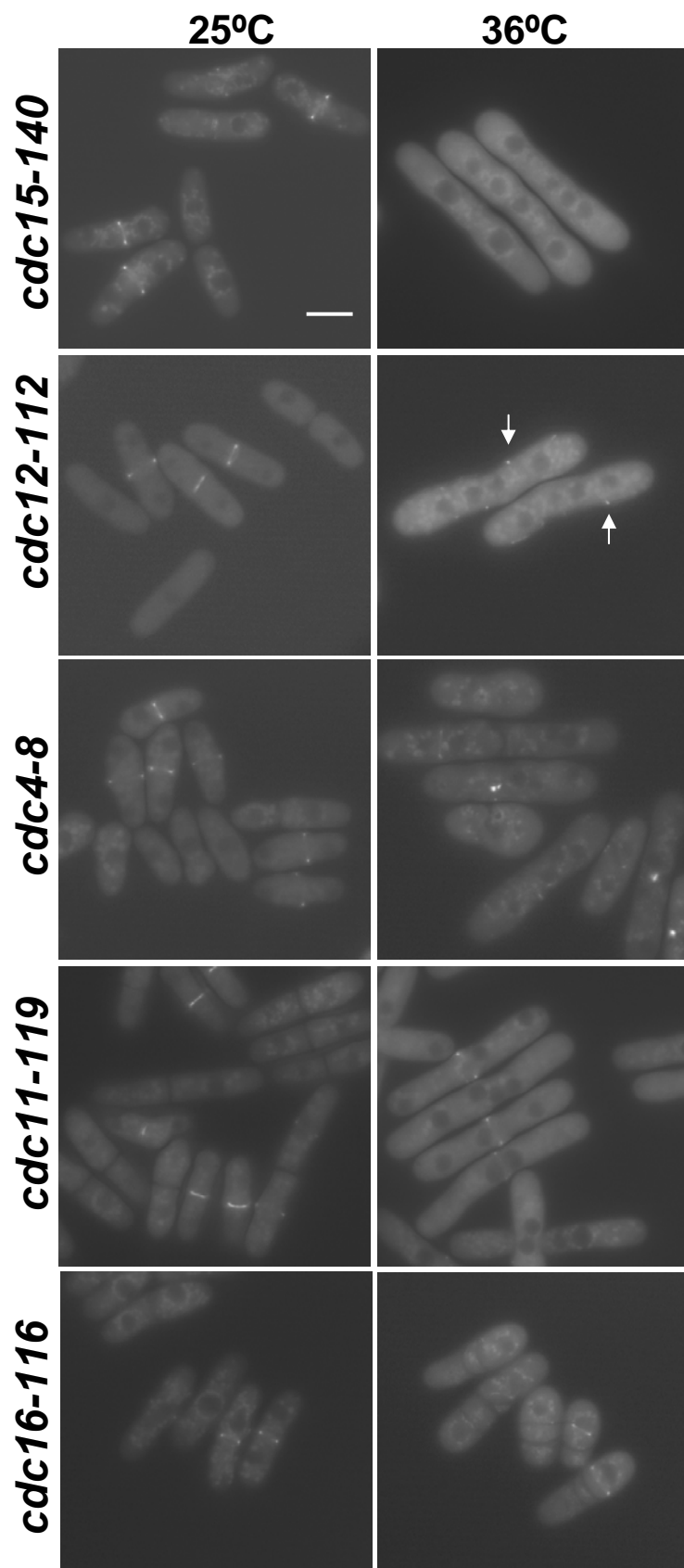
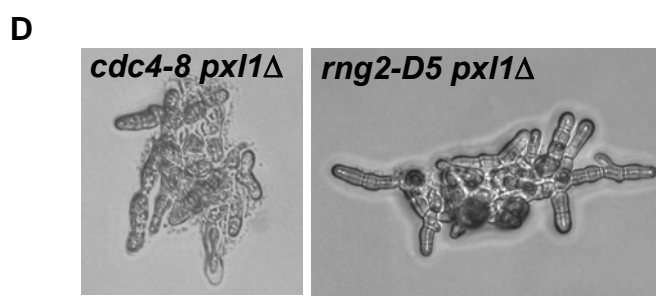
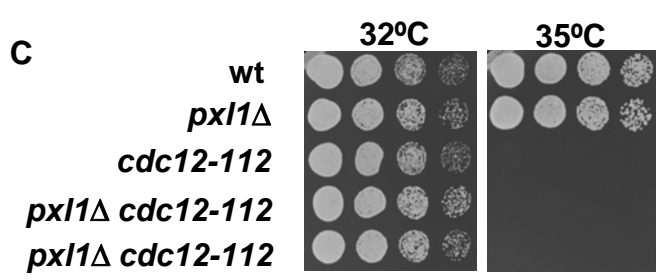
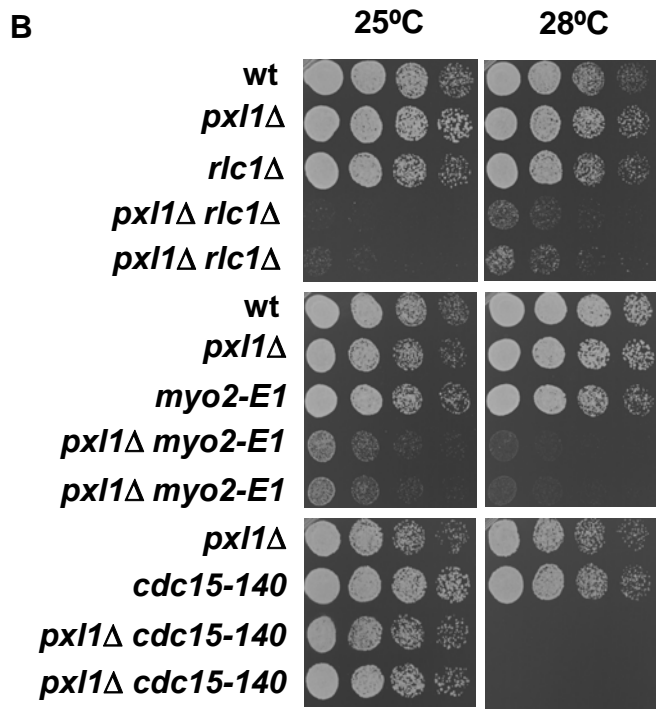
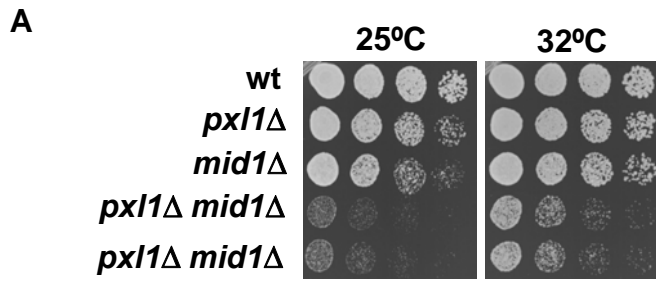


**B** LIM consensus: CXXCX16–23HXXCXXCXXCX16–21CX2–3(C, H, or D).

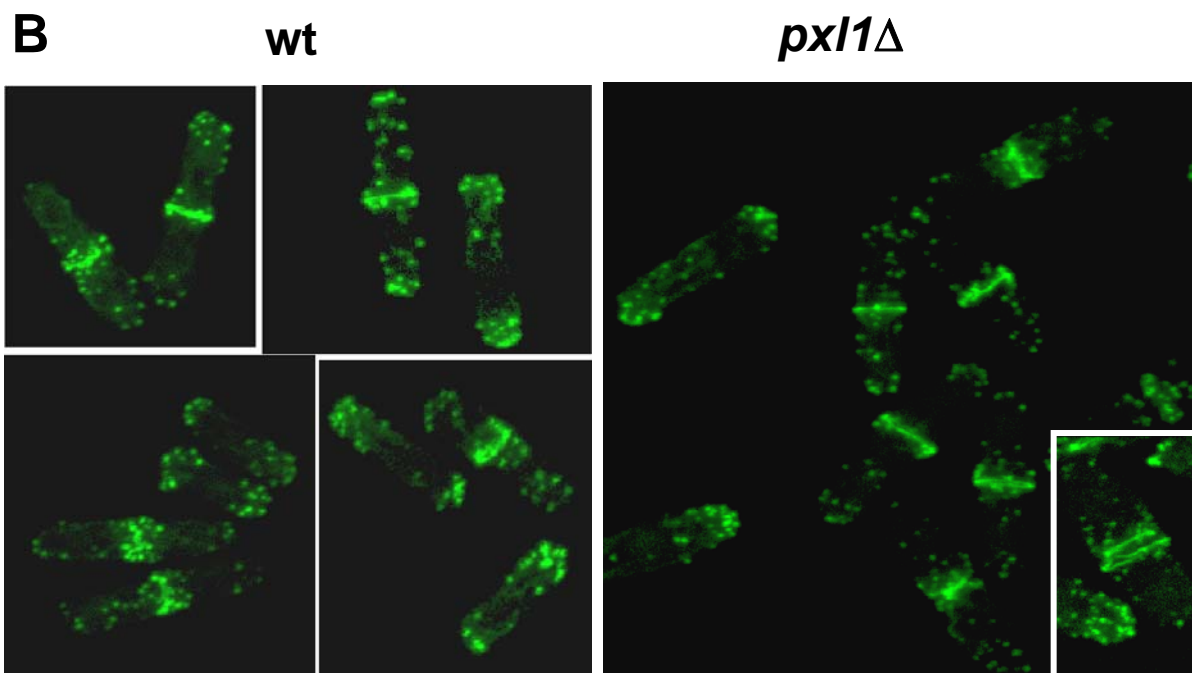
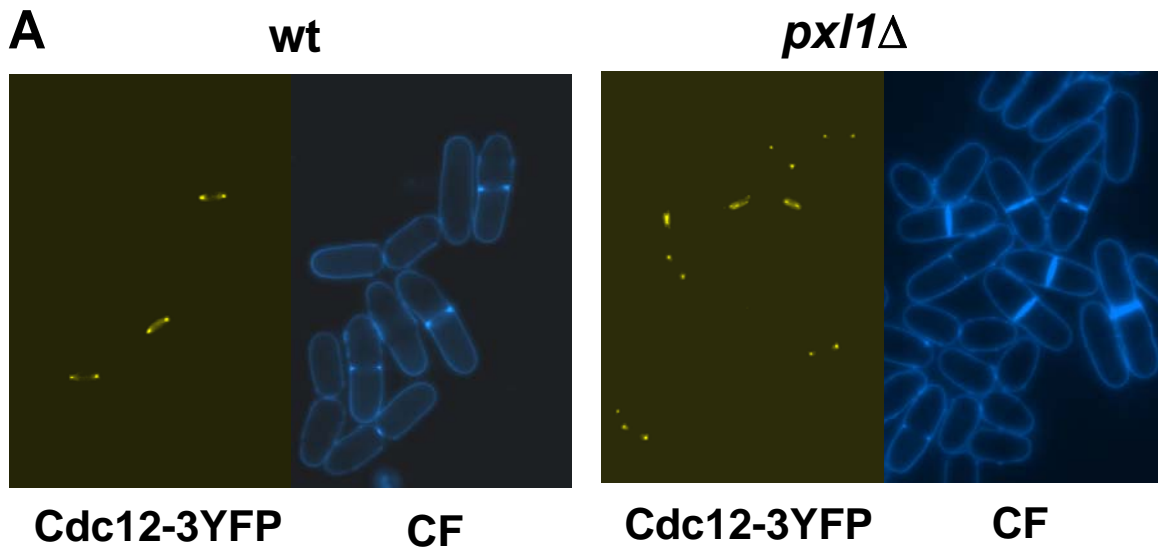
Paxillin Lim1	326	CGAC	CKKPI-AGQVVT----	AMGKTW	HPE	HFV	CTHC	QEEIG-SRNFFERD	GQ-PY	CEKD	376
Paxillin Lim2	385	CYY	CNGPI-LDKVVT----	ALDRTW	HPE	HFF	CAQC	GVVFFG-PEGFHEK	DGK-AY	CRKD	435
Paxillin Lim3	444	CGG	CARAI-LENYIS----	ALNTLW	HPE	CFV	CRE	CFTPFI-NGSFFE	HDGQ-PY	CEVH	494
Paxillin Lim4	503	CSG	CQKPI-TGRCIT----	AMGKKF	HPE	HFV	CAF	CLKQLN-KGTFKE	QNDK-PY	CQNC	553
SpPx11 Lim1	258	CHS	CGGSLRAGRIIS----	ASGKKL	HPQ	CFK	CDT	CSQNLE-HVGFYY	REGK-FY	CHLD	309
SpPx11 Lim2	318	CKH	CKTPI-EDQAVH----	INNDWF	HEN	HHF	CAG	CSEVFNVNIP	CIYRDDL-YW	CQTC	369
SpPx11 Lim3	378	CKK	CRKPI-LGISVK----	GSDGEY	HSQ	CWT	CGA	CNALLG-DEGYFM	IENT-PI	CRPC	428
ScPx11 Lim1	556	CRAC	GLEVTGKRMF	SKKENELSGQW	HRE	CFK	CIE	CGUKFNKHV	PCYILGDE-PY	CQKH	612
ScPx11 Lim2	621	CKV	CSNFI-EGECLE---	NDKVERF	HVD	CLN	CFL	CKTAIT--NDYYIF	NGEIPL	CGNH	672
		*	*	:	.	.	.	.	.	.	*

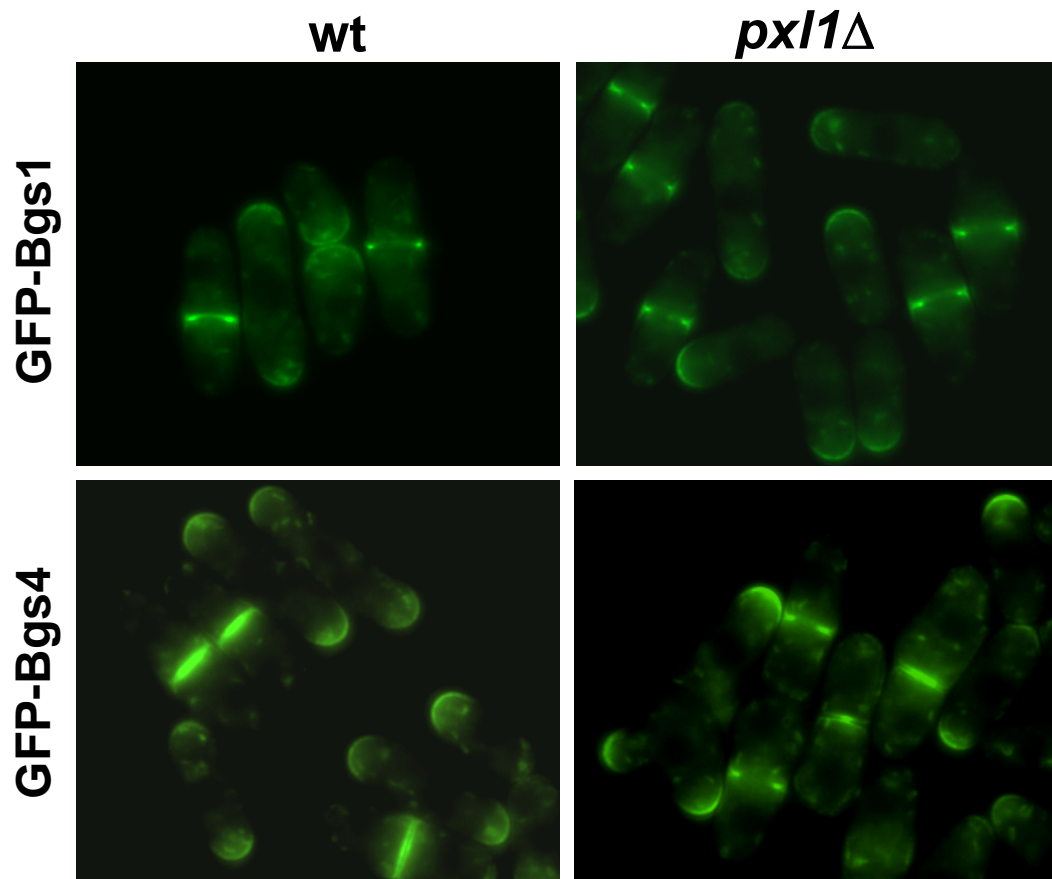


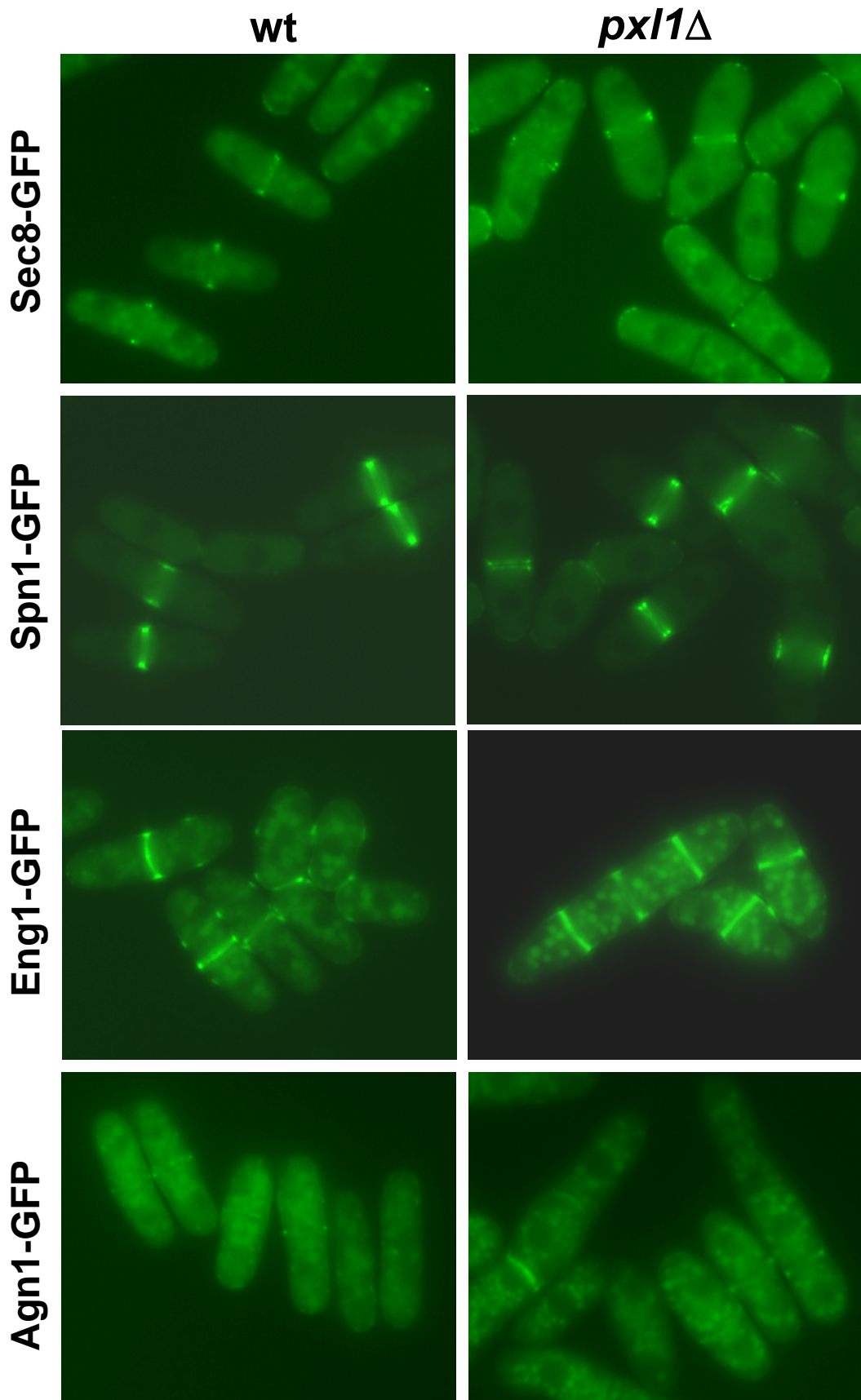
Supplementary Figure 2



Supplementary Figure 3







Supplementary Figure 6