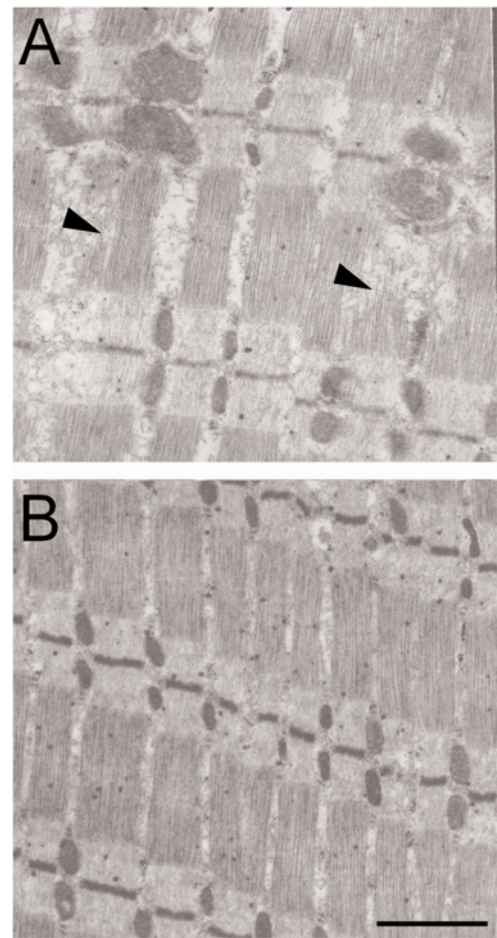


**Supplementary Figure 1: Excess AChE at the transgenic neuromuscular junction**

Example of electron micrograph through transgenic (A) and wild-type (B) neuromuscular junction stained for AChE activity (black dots). Note dense and wide distributed staining at the TG junction region compared with WT. Scale bar, 1  $\mu\text{m}$ . Cytochemical staining was performed as detailed in Ben Aziz-Aloya *et al.* (1993) *Proc Natl Acad Sci* **90**, 2471–2475.



**Supplementary Figure 2. Muscle fibres abnormalities**

A, longitudinal section from transgenic diaphragm muscle with atrophied, degenerated muscle myofibrils (arrowhead) alongside intact ones. Also note larger intracellular spaces. B, WT diaphragm muscle is free of degenerated fibres. Scale bar, 1  $\mu\text{m}$ . Electron microscopy on 80-nm-thick sections was performed as described in Seidman *et al.* (1995) *Mol Cell Biol* **14**, 459–473.