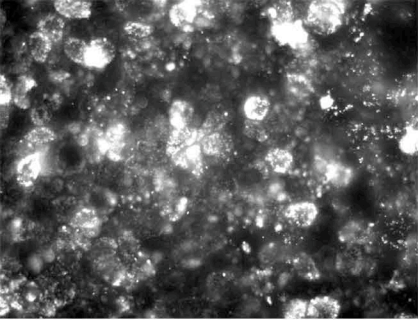
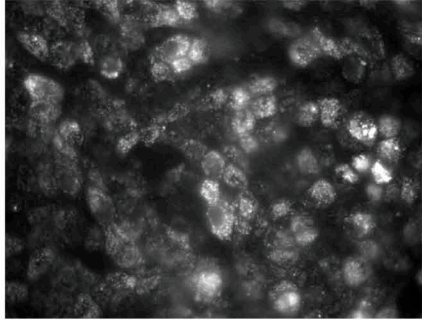


**E07-09-0902 Sheff**

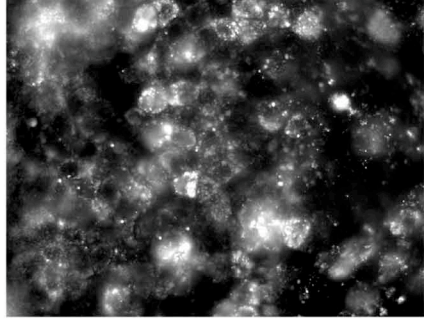
**Supplementary Figure 1.** Comparing expression of RFP-Rab8 constructs in MDCKT cells. MDCKT cells were infected with RFP-RAB8 constructs and imaged with excitation at 546 nm and emission at 570 nm. Left is Adenoviral wild type RFP-Rab8 with cells infected on Day1. Center is Lentiviral dominant active RFP-Rab8 expressed on Day 1. Right is dominant active RFP-Rab8 expressed on Day 3. Images in all panels were acquired on day four in parallel cultures grown at the same time and imaged with the same settings.



Adenoviral  
WT RFP-Rab8  
Day 1



Lentiviral  
DA RFP-Rab8  
Day 1



Lentiviral  
DA RFP-Rab8  
Day 3