

Figure S3(a): Additional examples of functionally or chromosomally clustered genes exhibiting discordant mRNA (blue) and protein (red) dynamics. The horizontal axis corresponds to time spanning from 7 h to 38 h while the vertical axis corresponds to \log_2 expression ratio relative to 7 h sample.

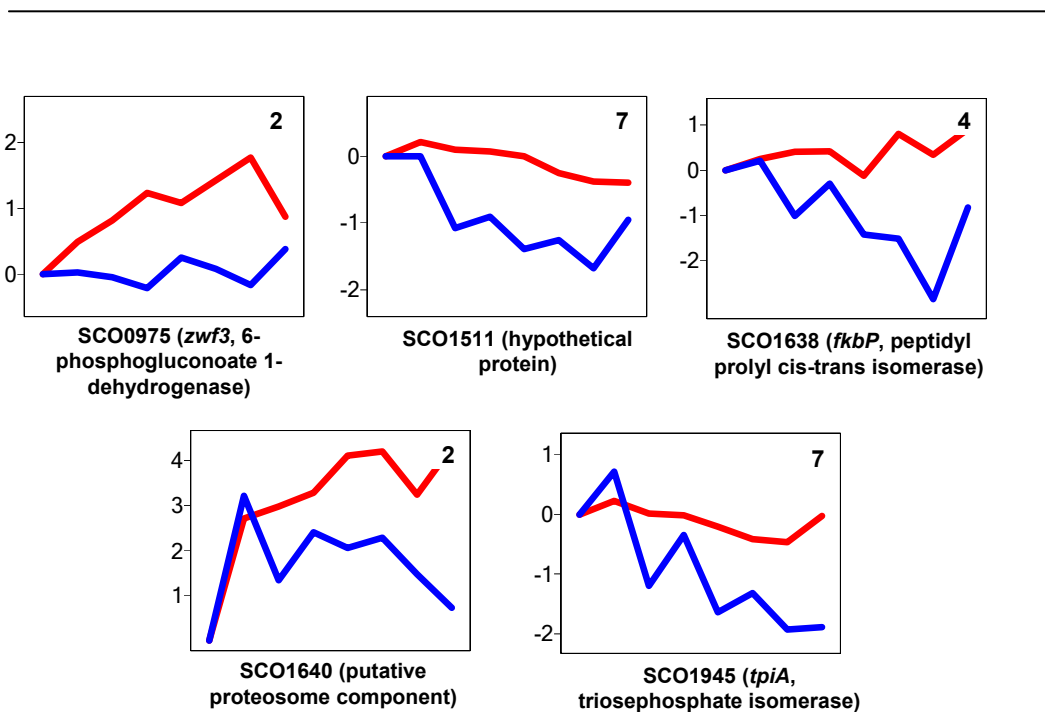


Figure S3(b): Examples of isolated genes that could not be clustered as functional groups exhibiting discordant mRNA (blue) and protein (red) dynamics. The horizontal axis corresponds to time spanning from 7 h to 38 h while the vertical axis corresponds to \log_2 expression ratio relative to 7 h sample. The numbers on the top right indicate the total number of unique peptide hits supporting each protein identification. Figure continued on next page.

Figure S3(b) (continued)

