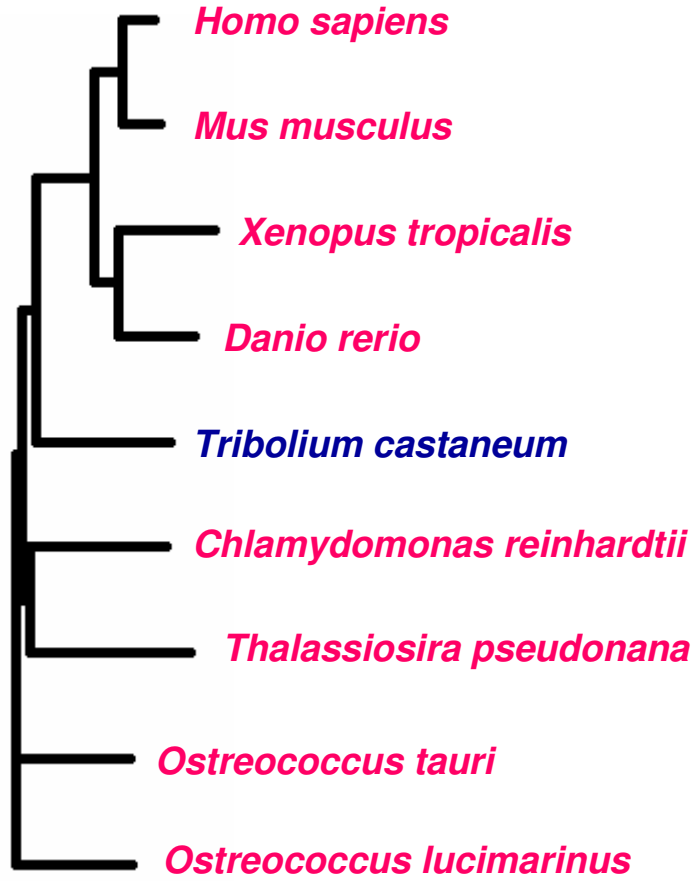


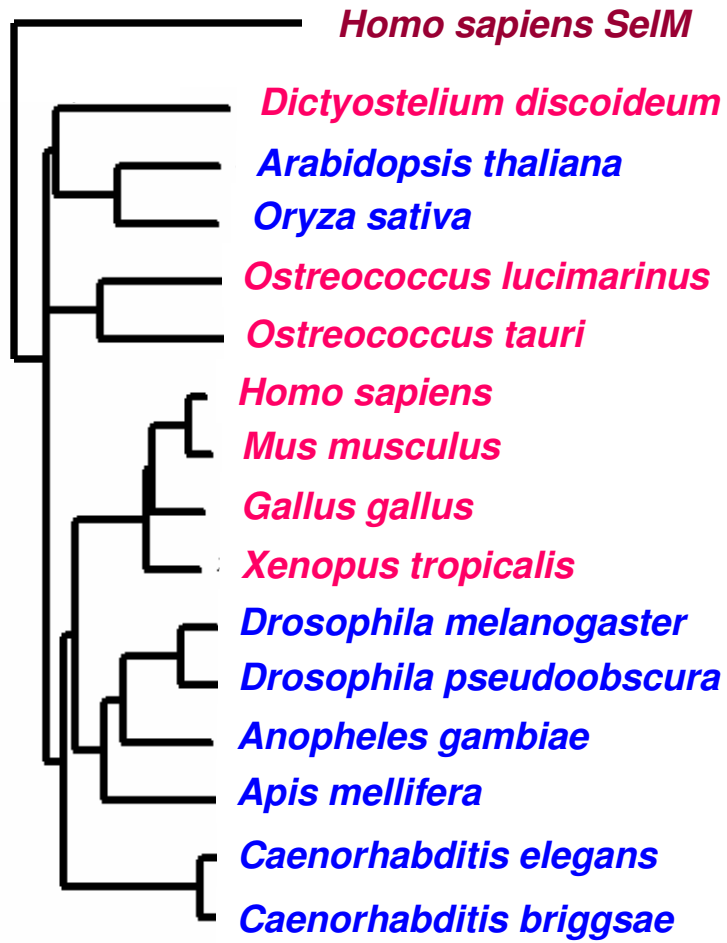
Additional data file 4

Each tree corresponds to one selenoprotein, which is shown above the tree. In all figures in this data file, selenoproteins are indicated by labeling organisms in red, and cysteine-containing homologs in blue. If a different selenoprotein (distant homolog) is included in the tree, the name of this protein is indicated in addition to the name of an organism from which this protein is derived. If organism name is indicated more than once in the same tree, this organism has several homologs of the same protein. For reference, bacterial homologs were included in the SelW and DI trees.

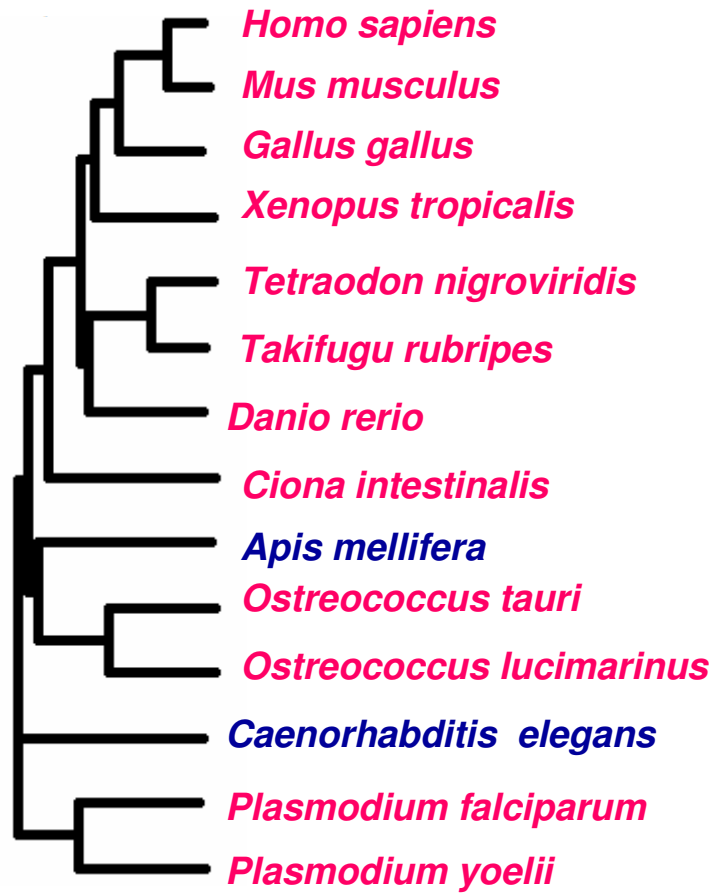
SeIM



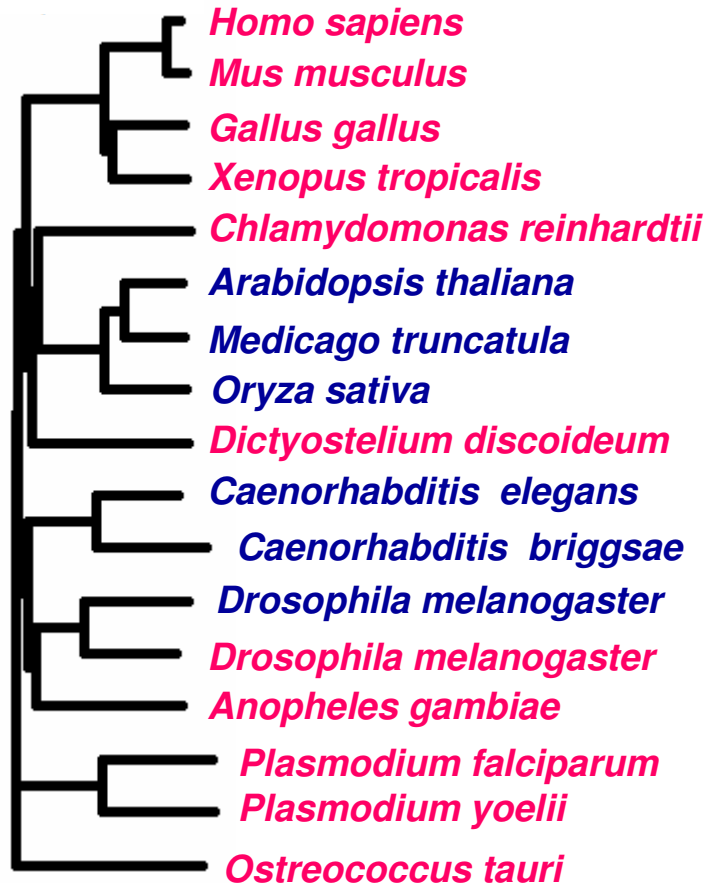
Sep15



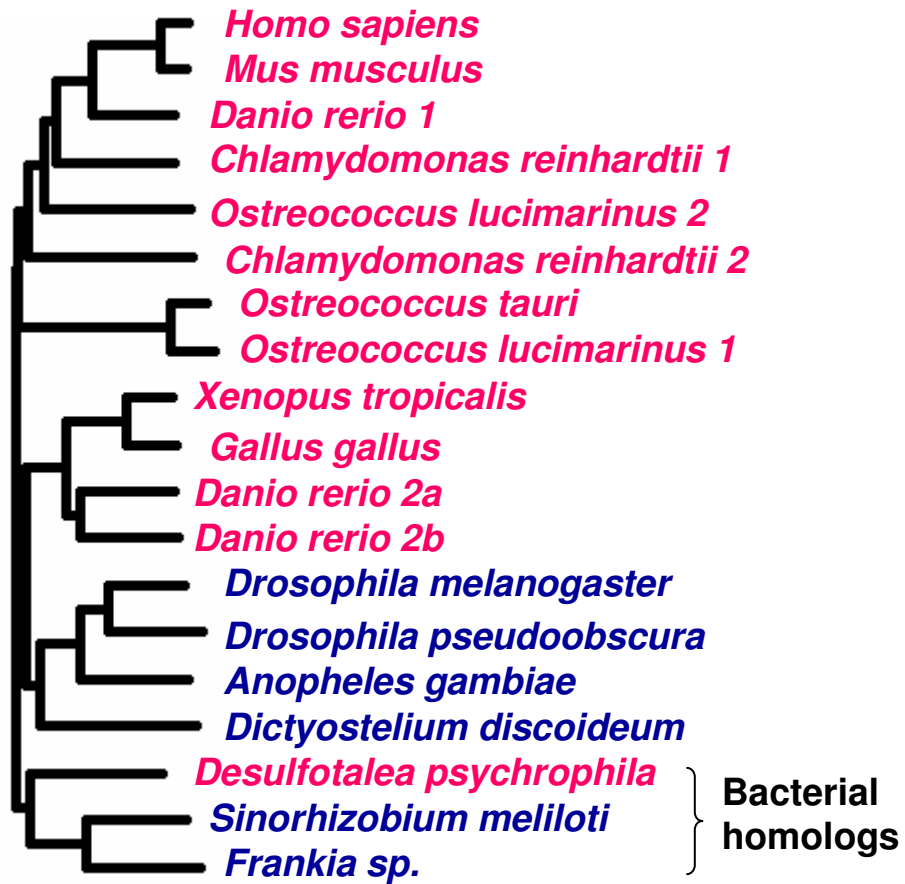
SelS



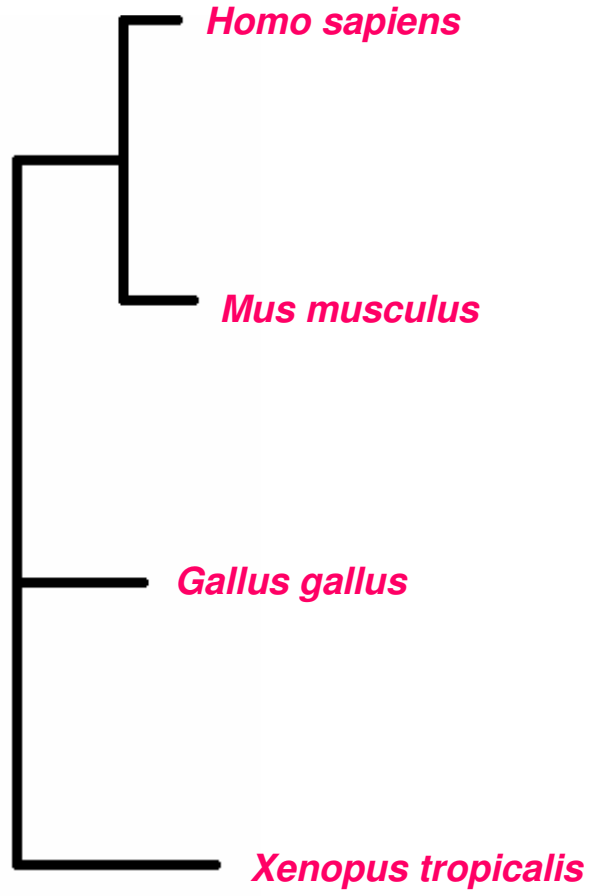
SeIK



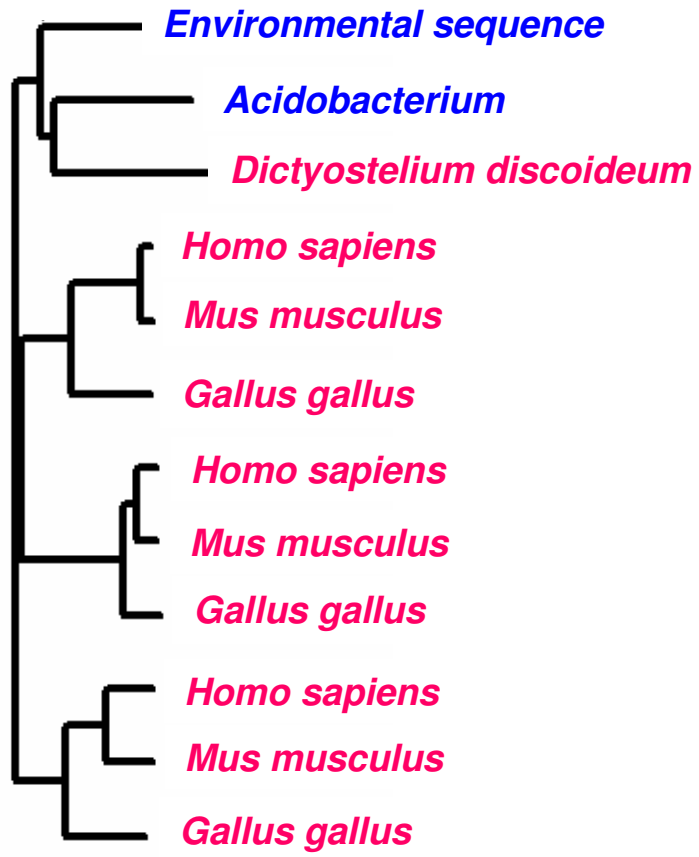
SeIW



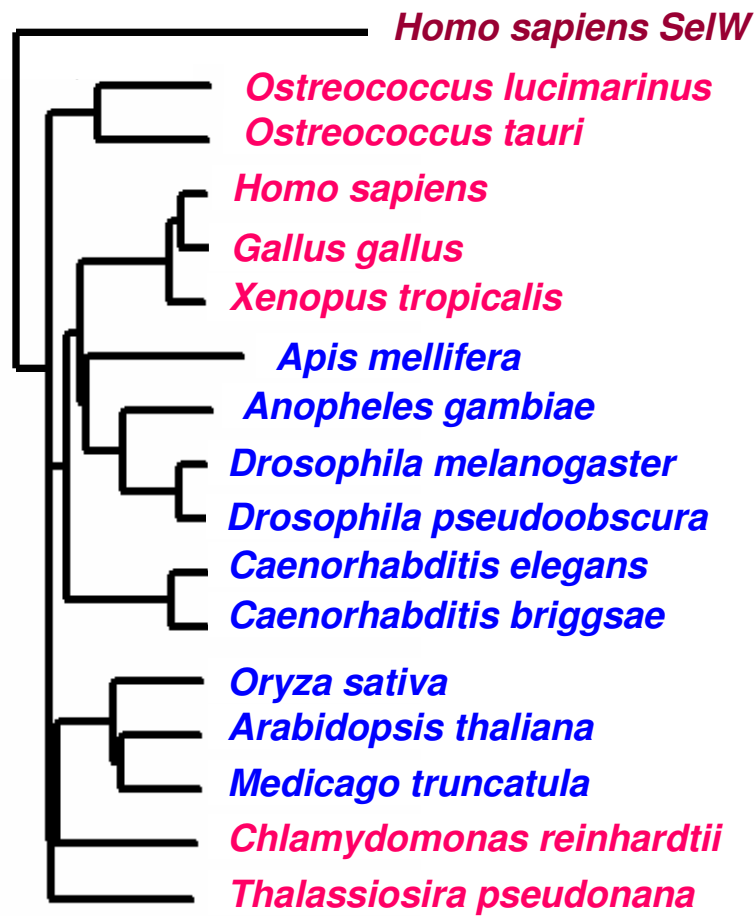
SeIN



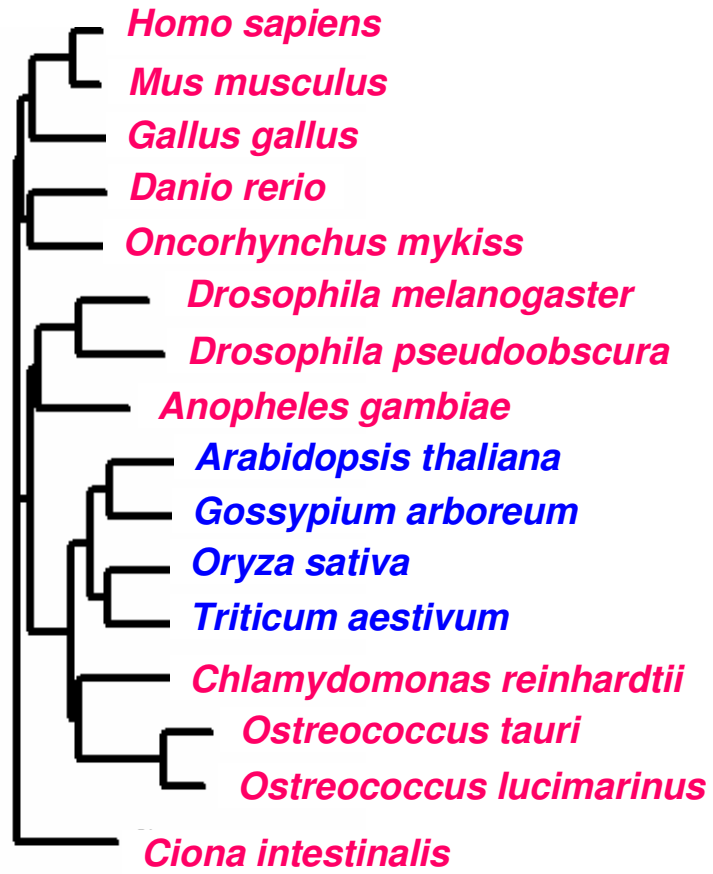
DI



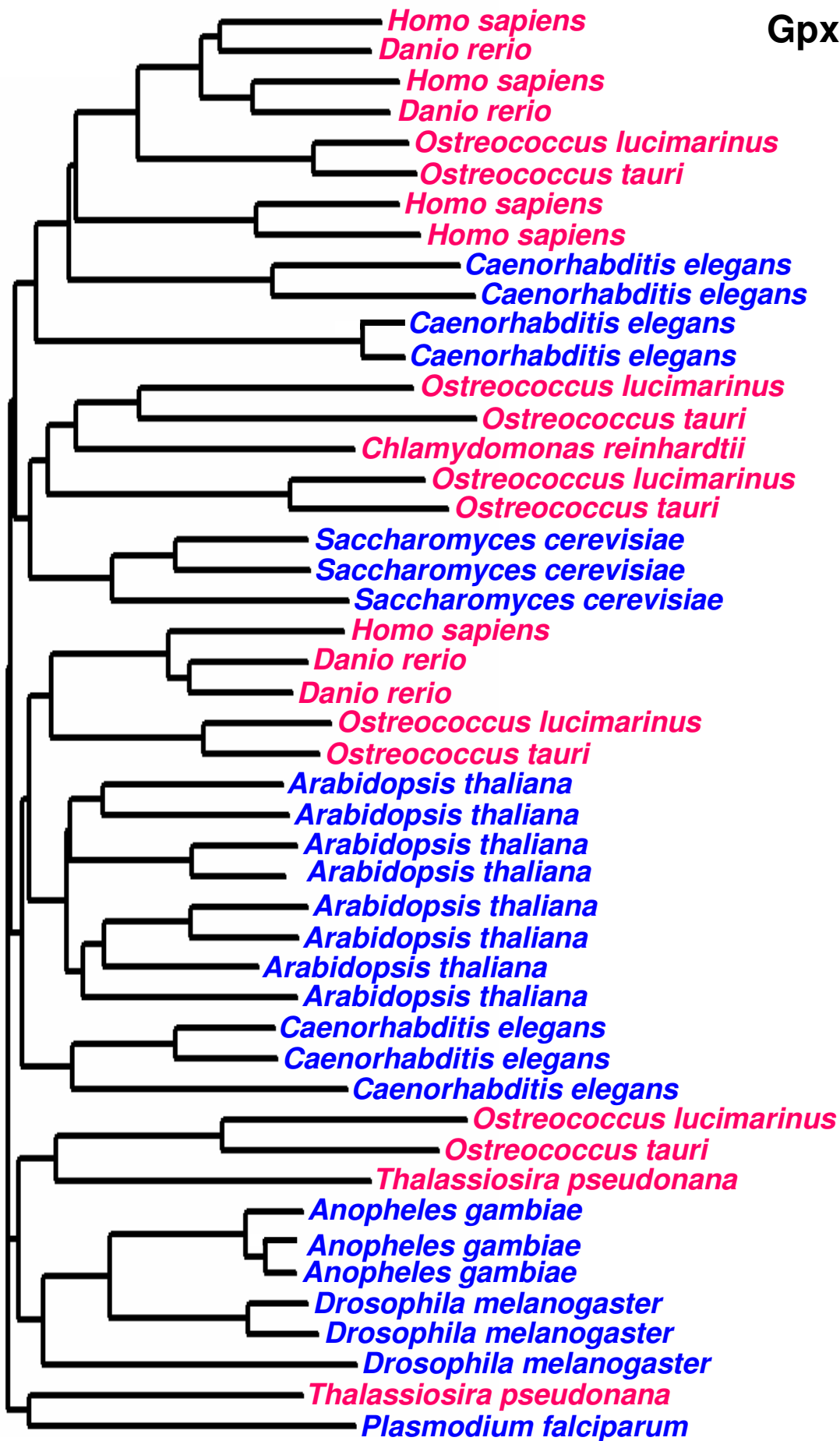
SeIT



SeIH



Gpx



SeIU

