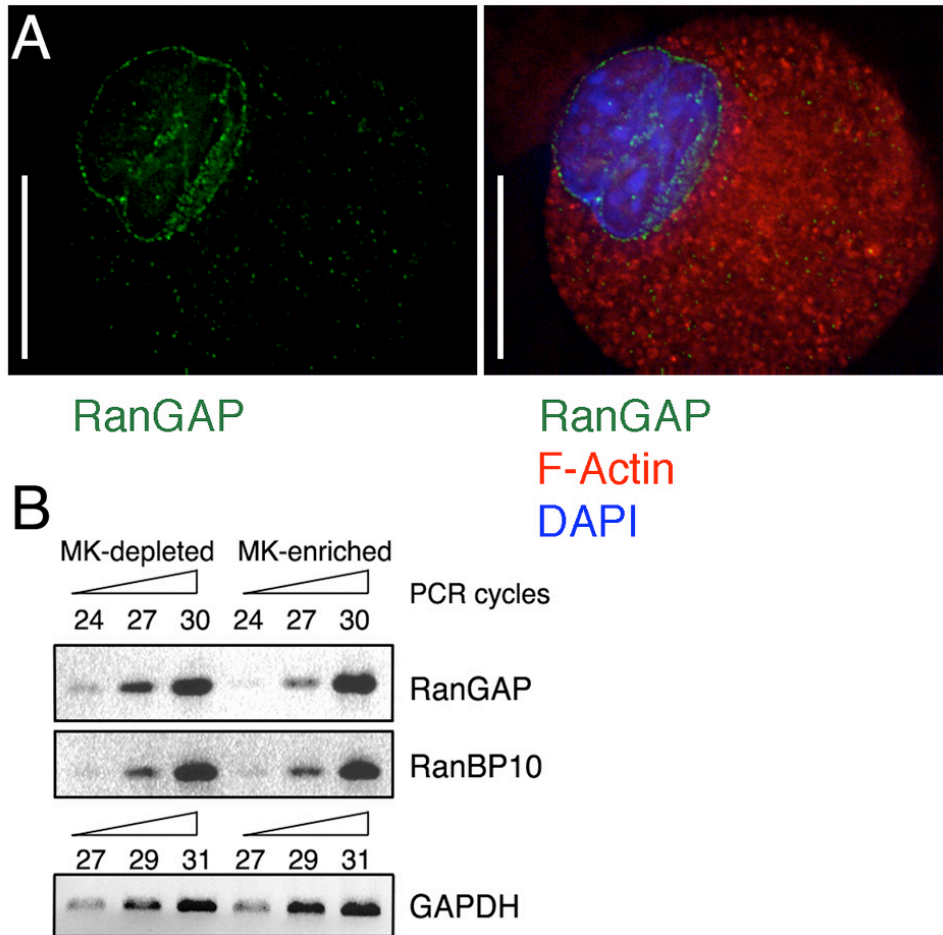


Supplementary Figure 2



Supplementary Figure 2. *Ran-GAP and RanBP10 in mature megakaryocytes.* (A) Ran-GAP (green stain) concentrates at the nuclear envelope in MKs, as expected and as revealed by IF. Cells were counterstained with Alexa594-conjugated phalloidin (red) and DAPI (blue) to highlight the cytoplasm and nucleus, respectively. Scale bars: 15 μ m. (B) Semi-quantitative RT-PCR using cDNA from hematopoietic cell cultures either depleted (left) or enriched (right) for mature MKs, with PCR cycle numbers as indicated for Ran-GAP1, RanBP10 and GAPDH. Ran-GAP mRNA levels are reduced in the MK-enriched population, whereas RanBP10 levels are slightly increased, both in comparison with GAPDH.