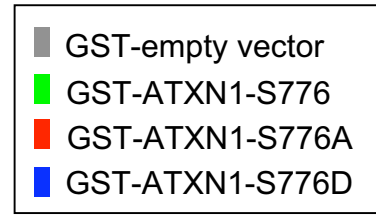
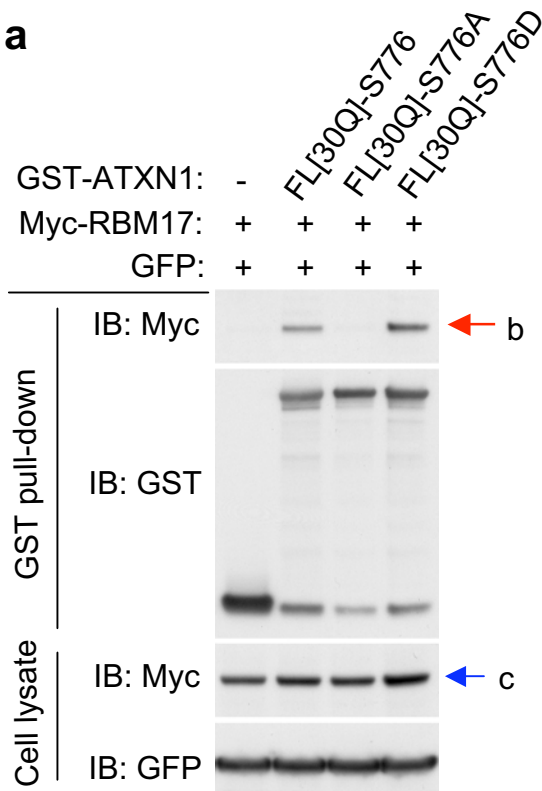
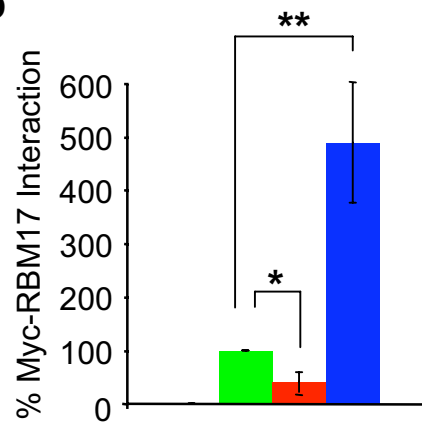


Supplementary Fig. S2

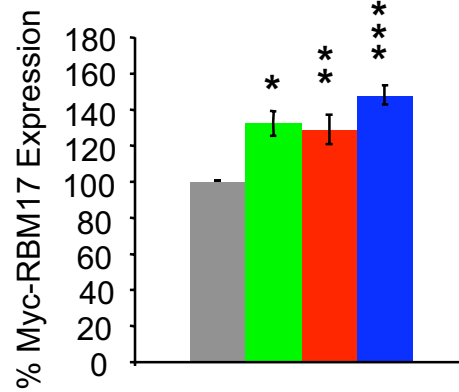
a



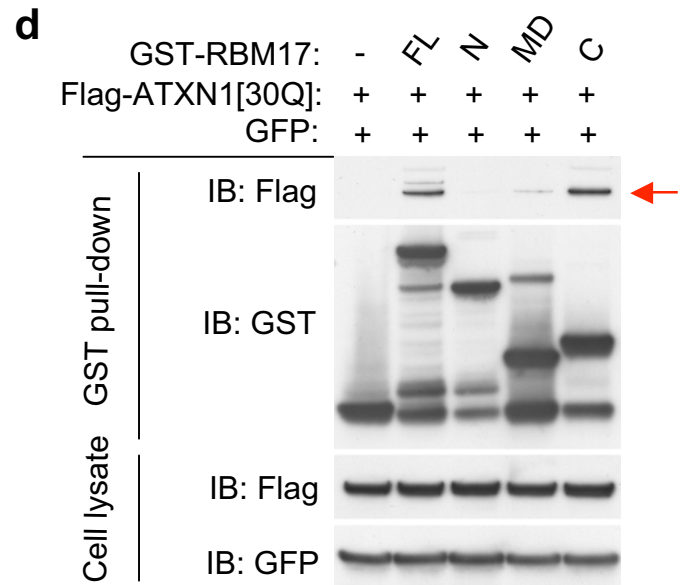
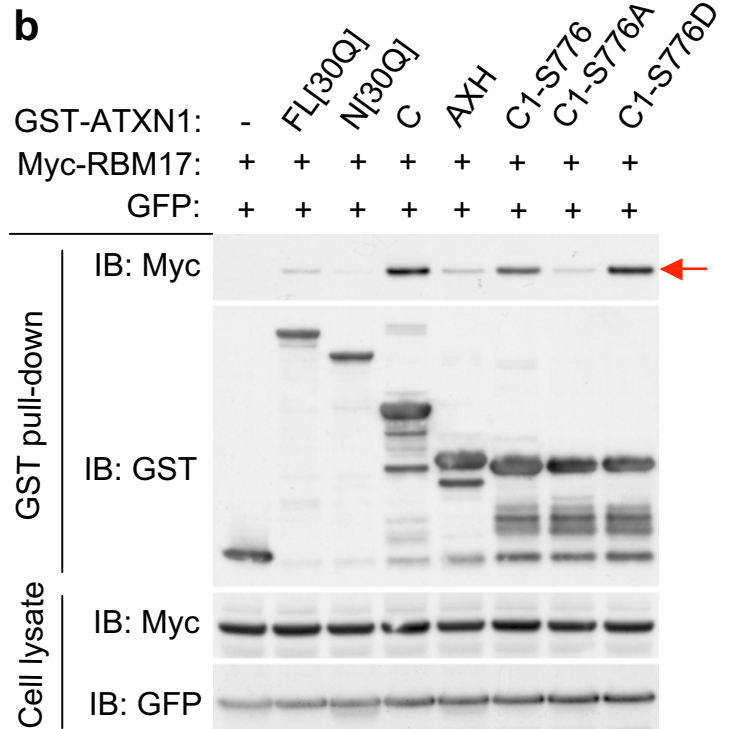
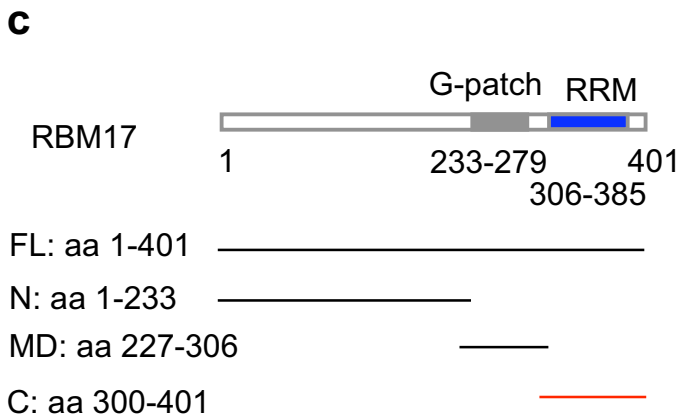
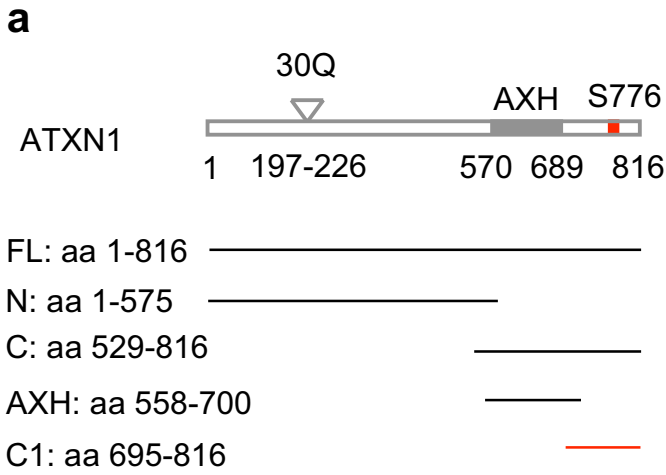
b



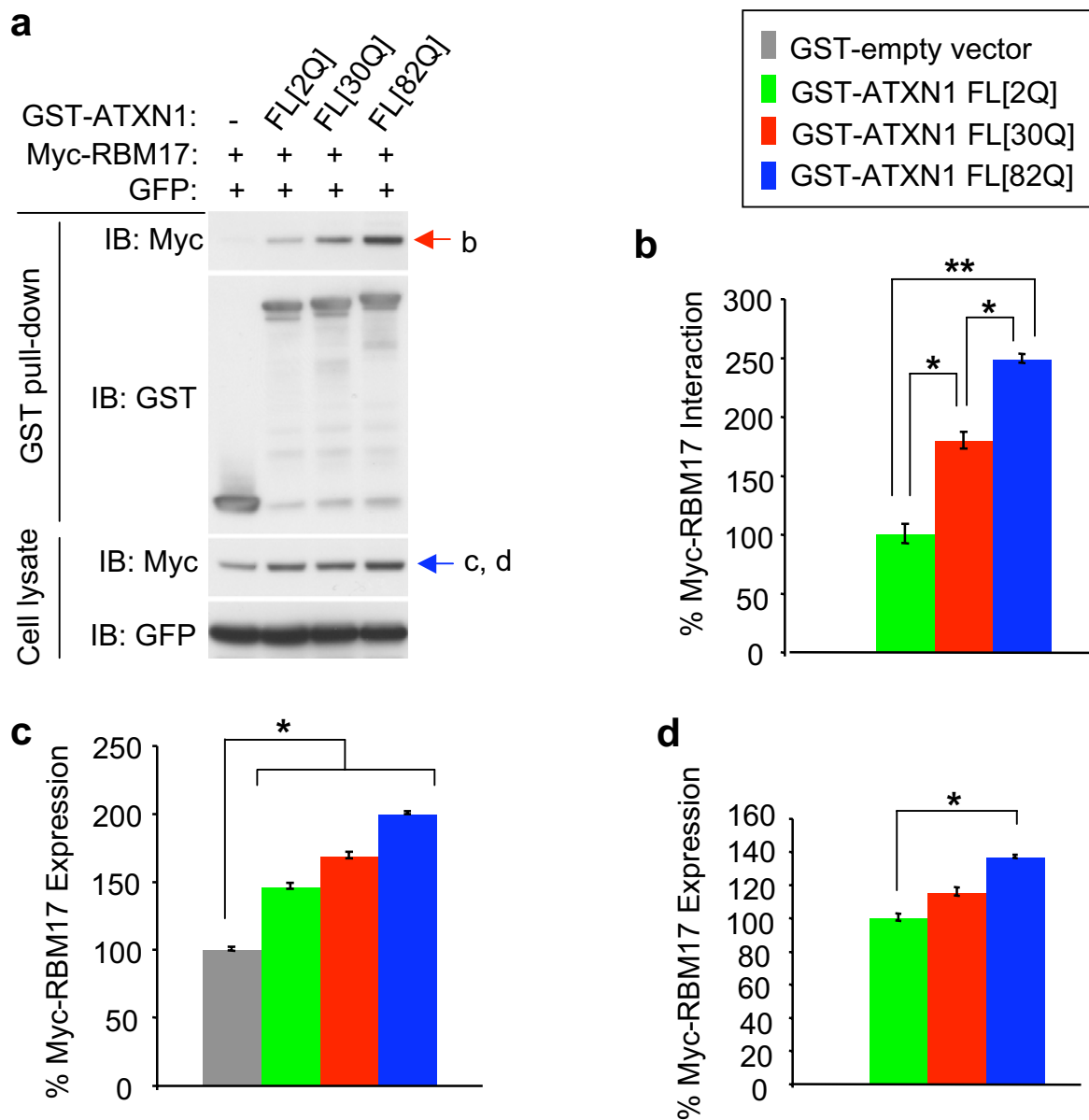
c



Supplementary Fig. S3

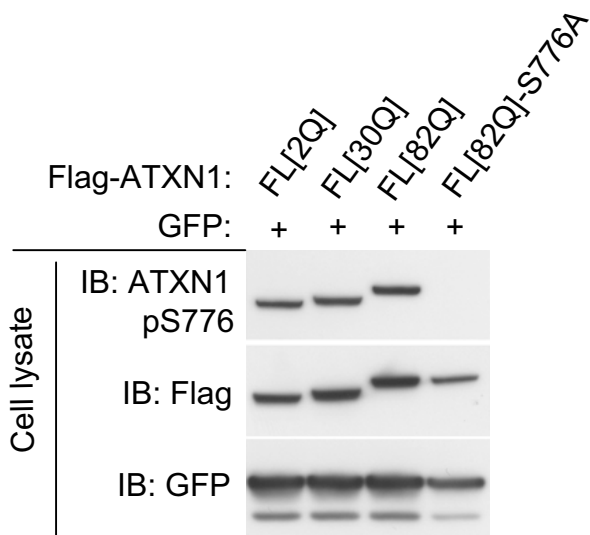


Supplementary Fig. S4

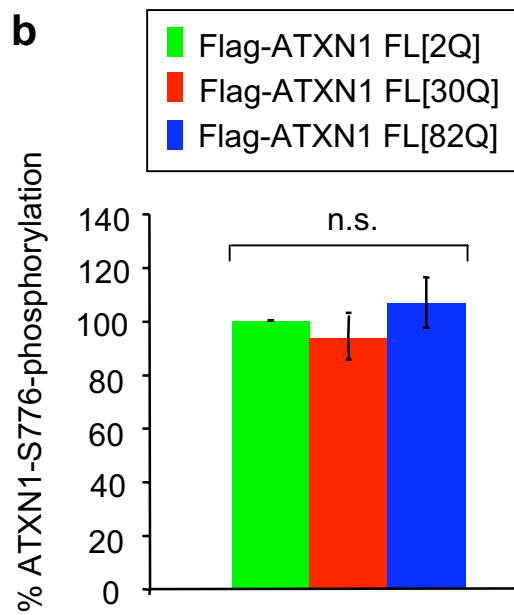


Supplementary Fig. S5

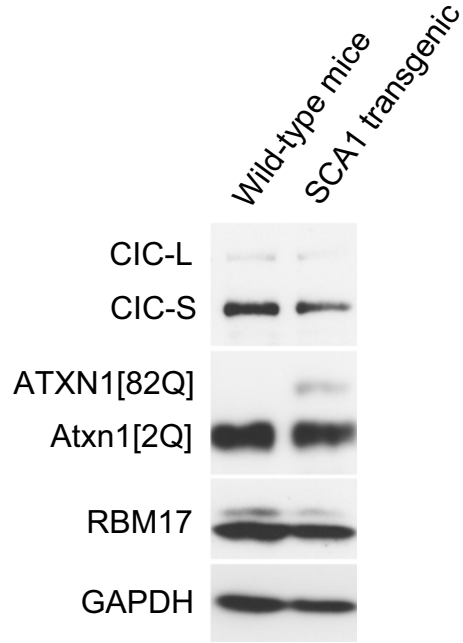
a



b

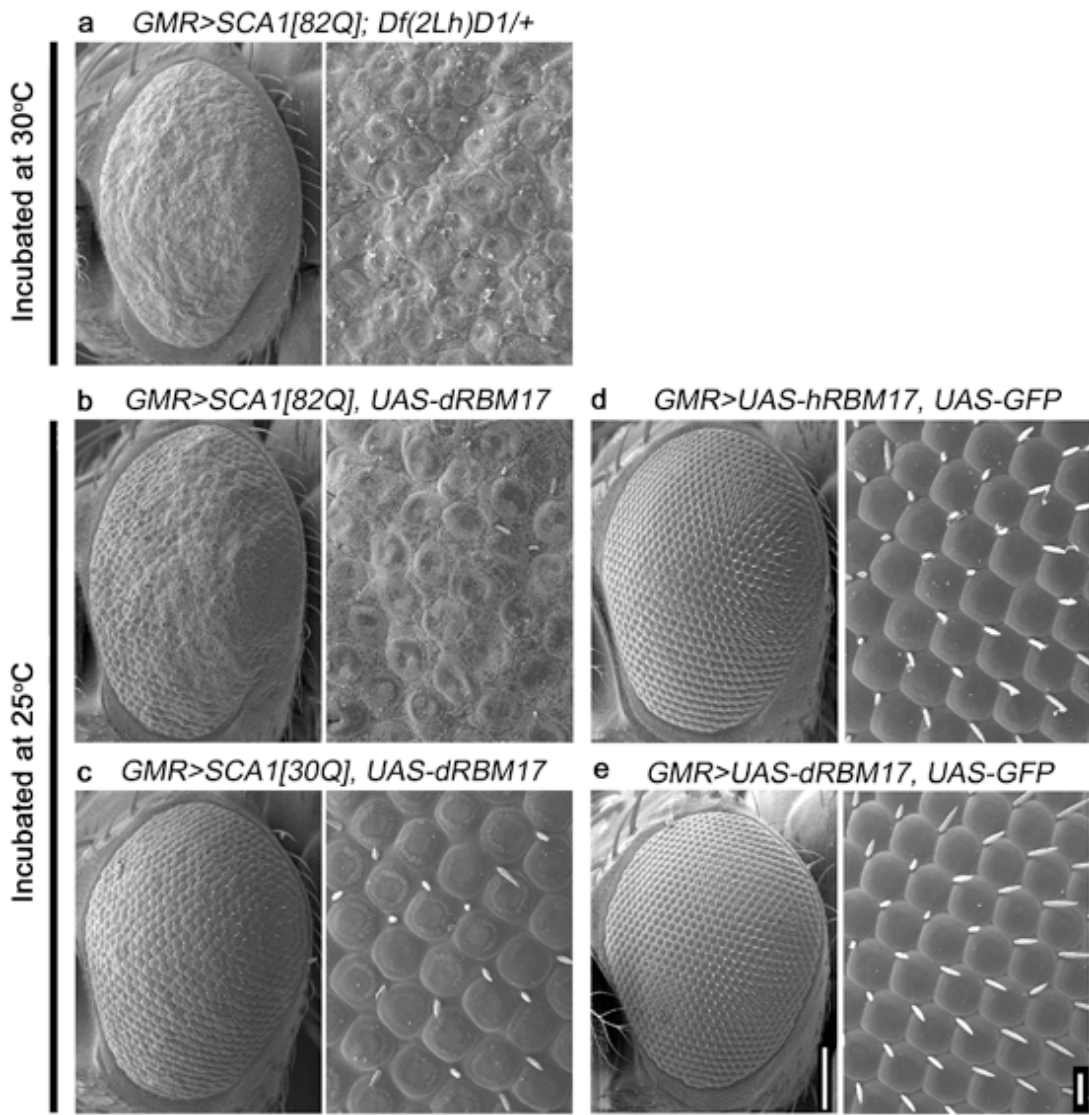


Supplementary Fig. S6

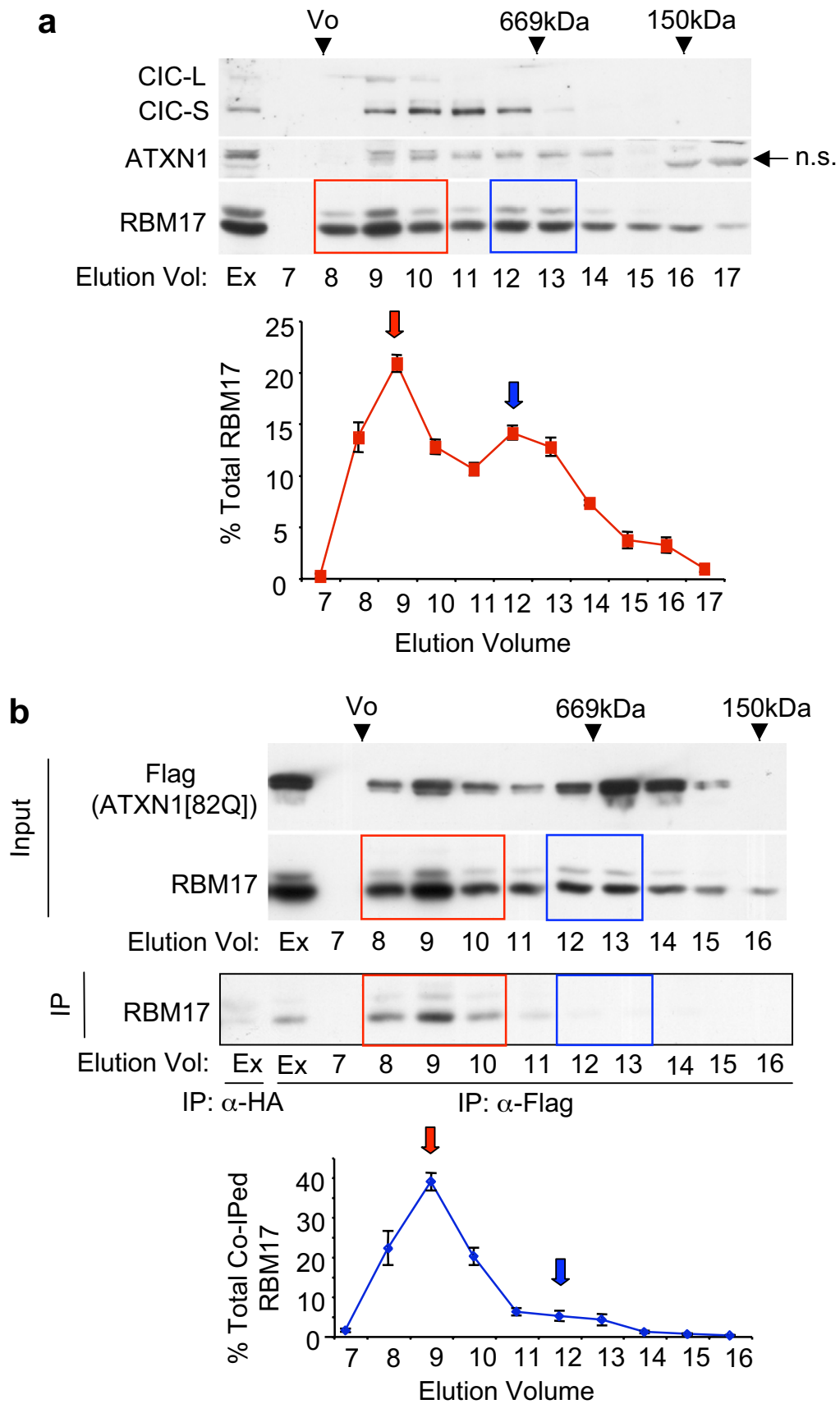


18-week-old mouse cerebellar extract

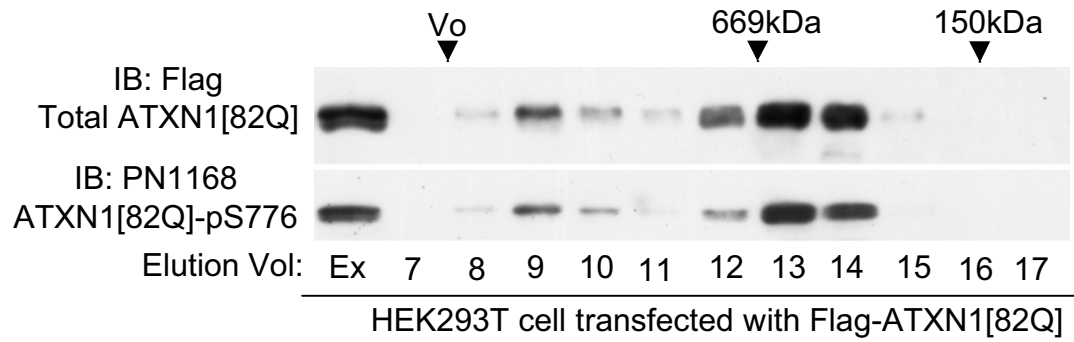
Supplementary Fig. S7



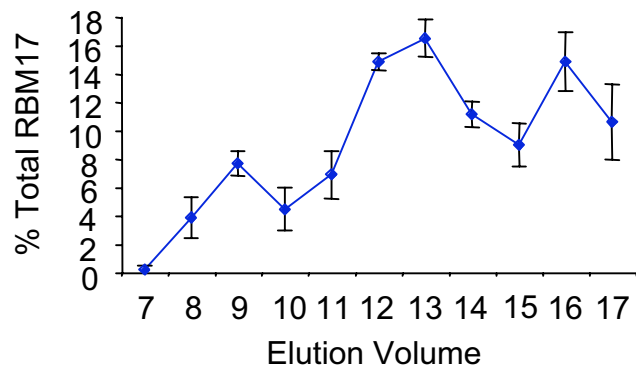
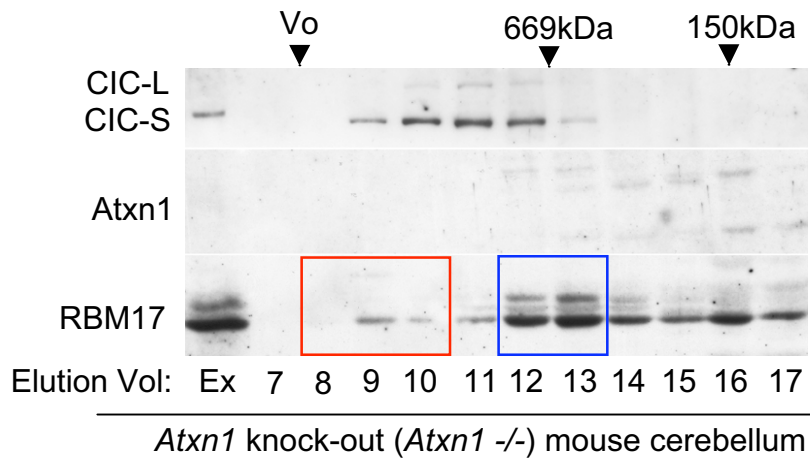
Supplementary Fig. S8



Supplementary Fig. S9

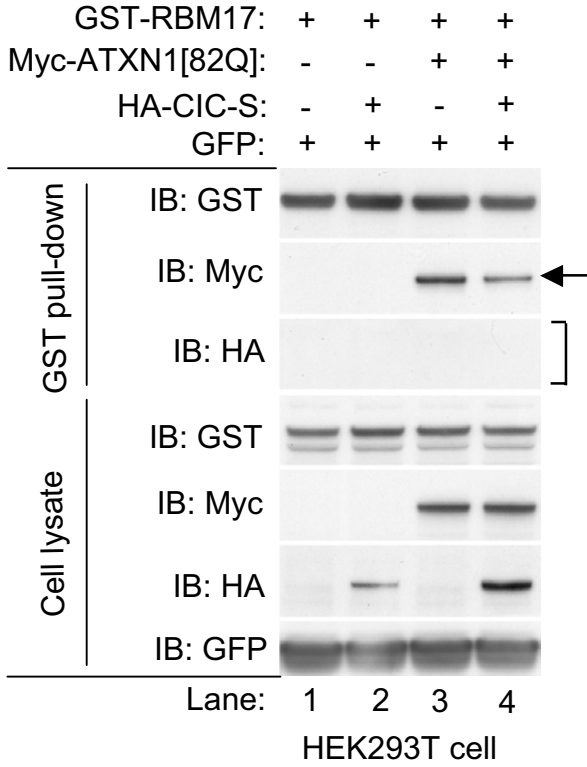


Supplementary Fig. S10

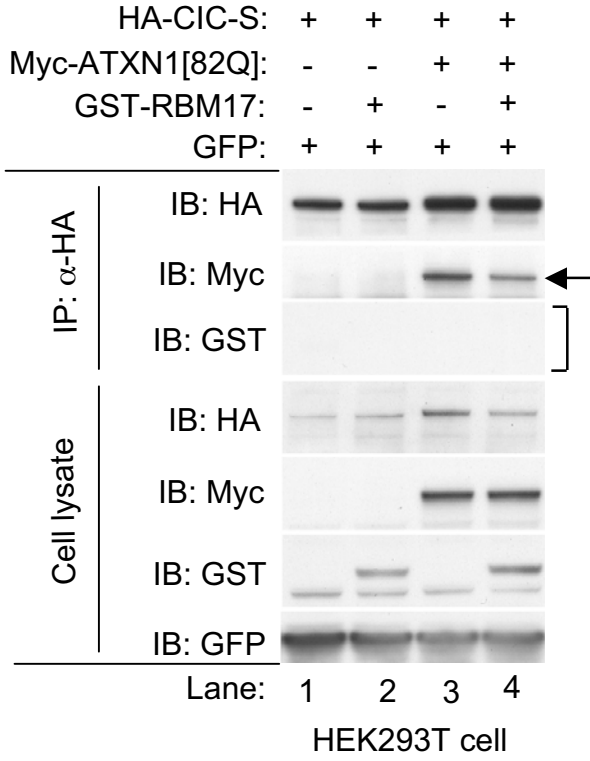


Supplementary Fig. S11

a

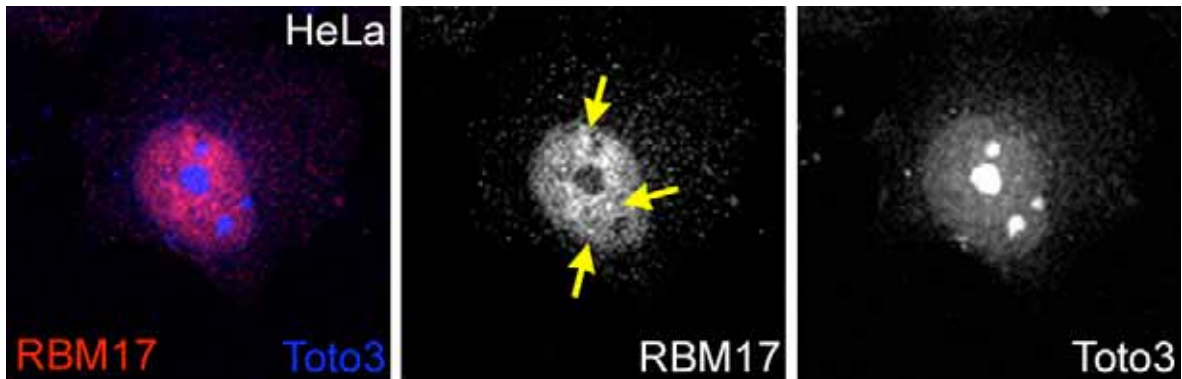


b

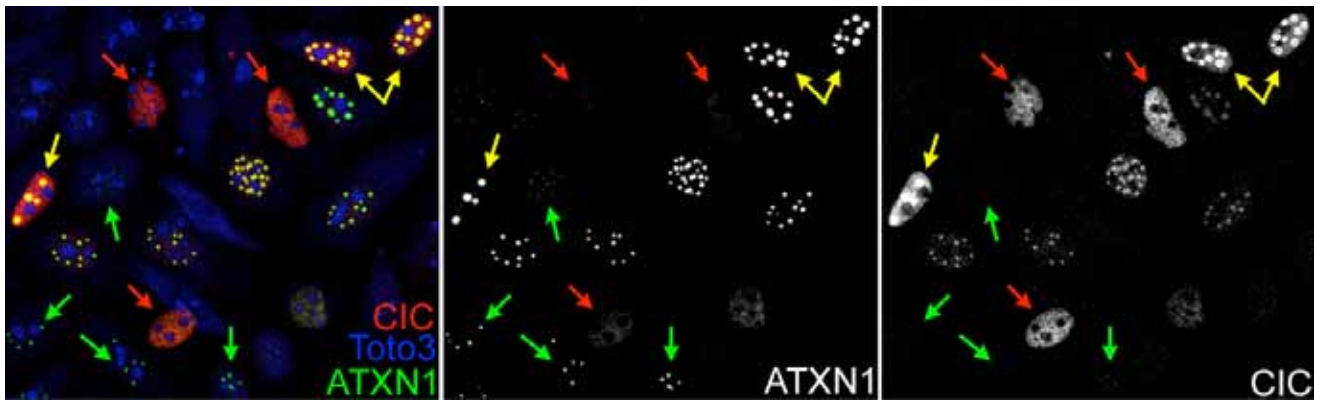


Supplementary Fig. S12

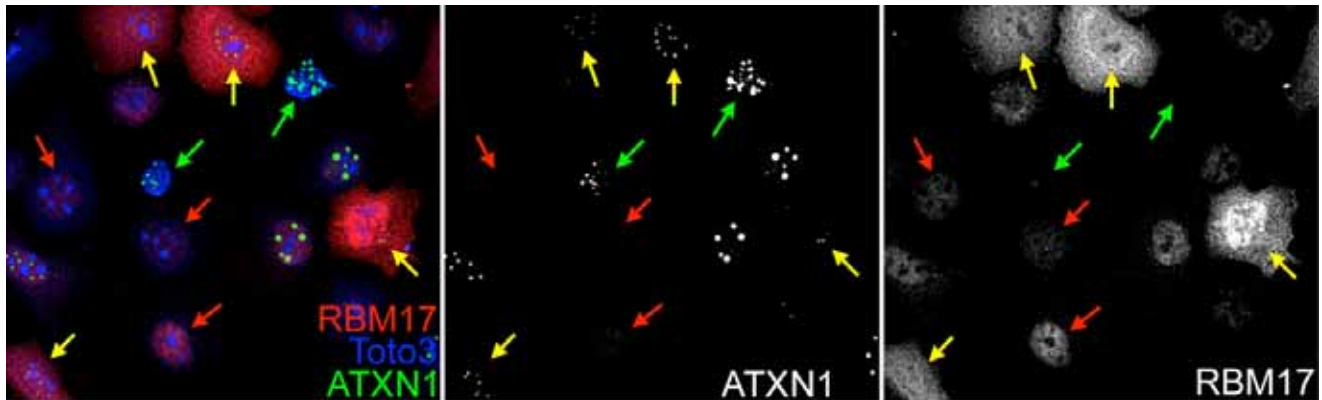
a HeLa cell transfected with myc-RBM17



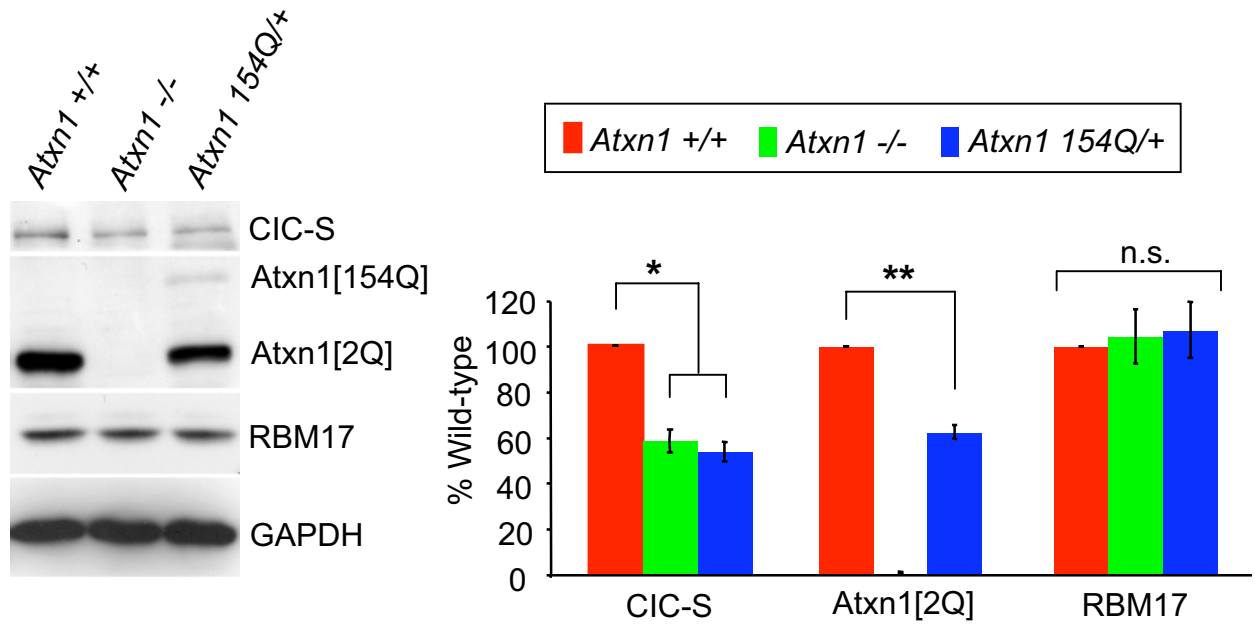
b HeLa cell transfected with GFP-ATXN1[82Q] and HA-CIC-S



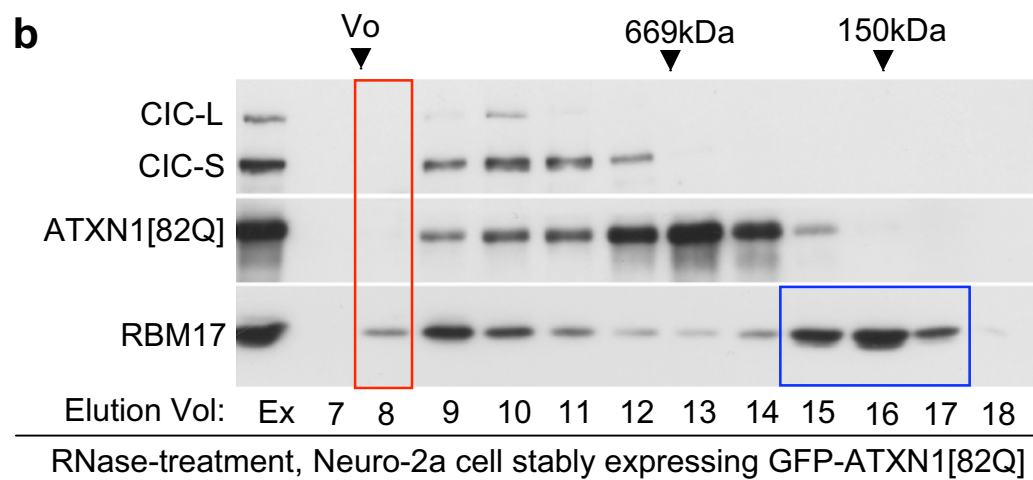
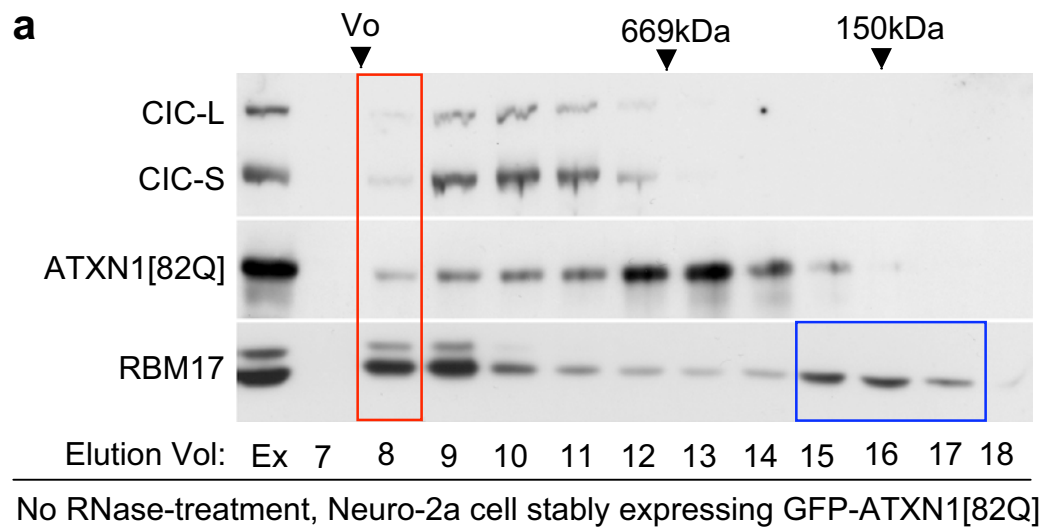
c HeLa cell transfected with GFP-ATXN1[82Q] and myc-RBM17



Supplementary Fig. S13

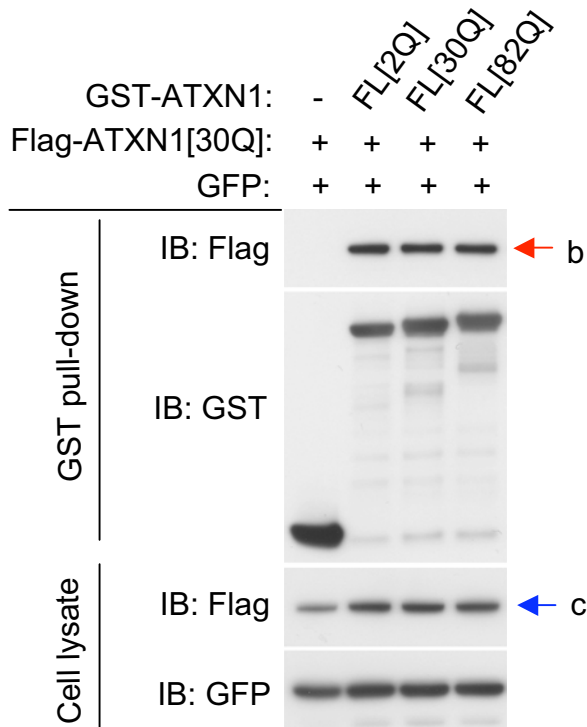


Supplementary Fig. S14

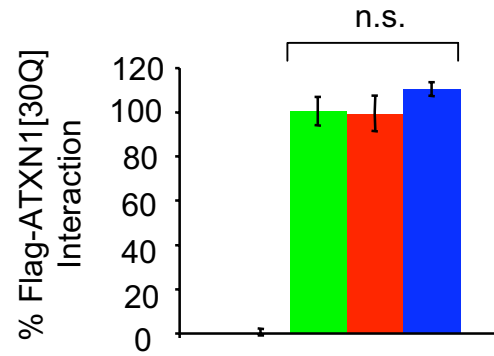


Supplementary Fig. S15

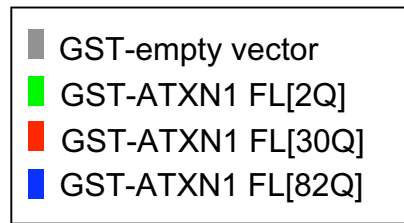
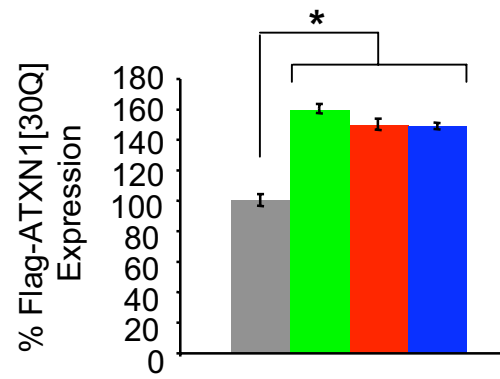
a



b

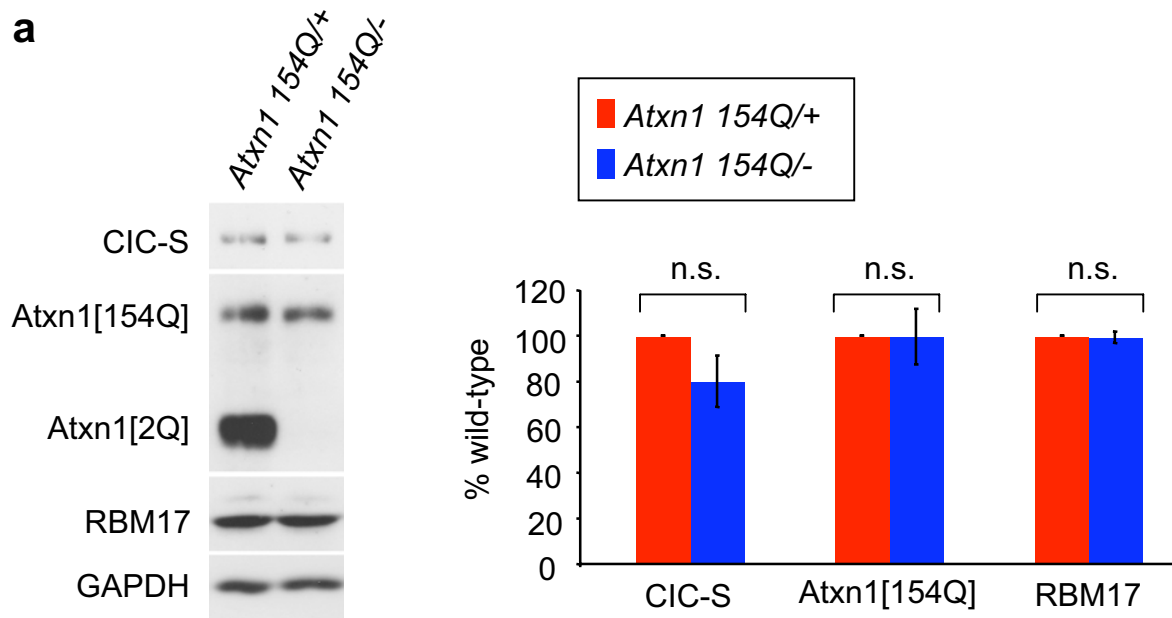


c

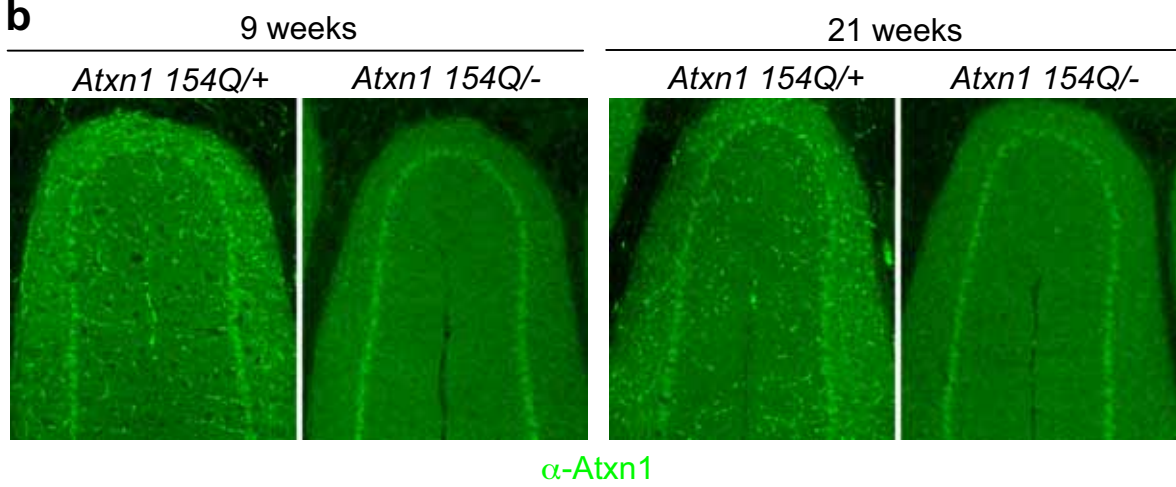


Supplementary Fig. S16-1

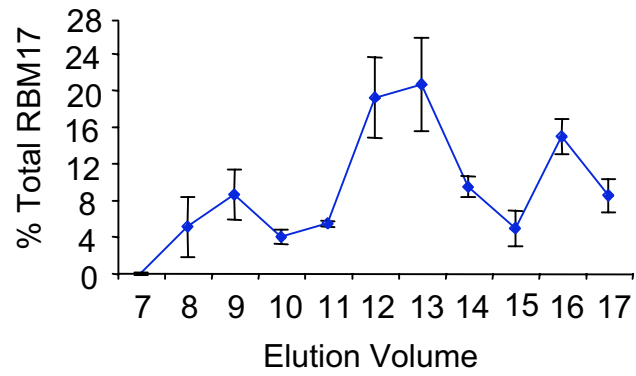
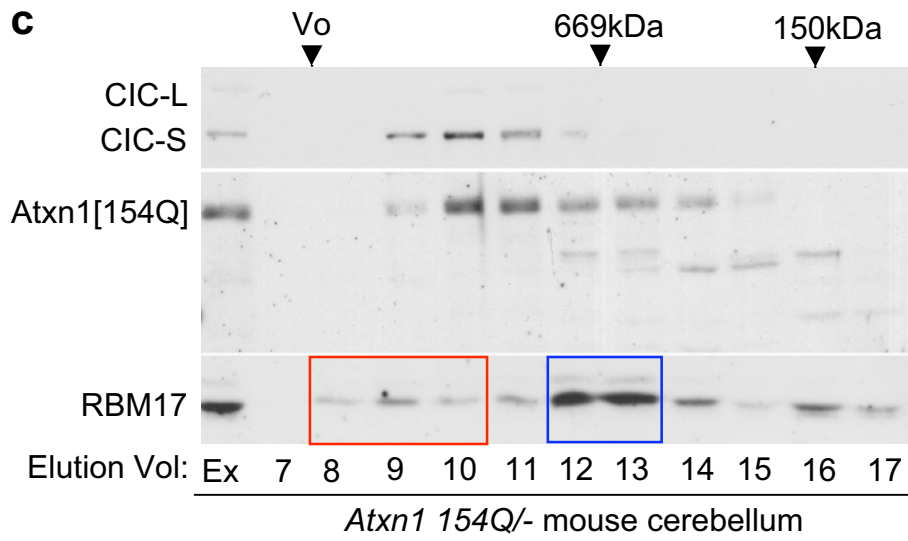
a



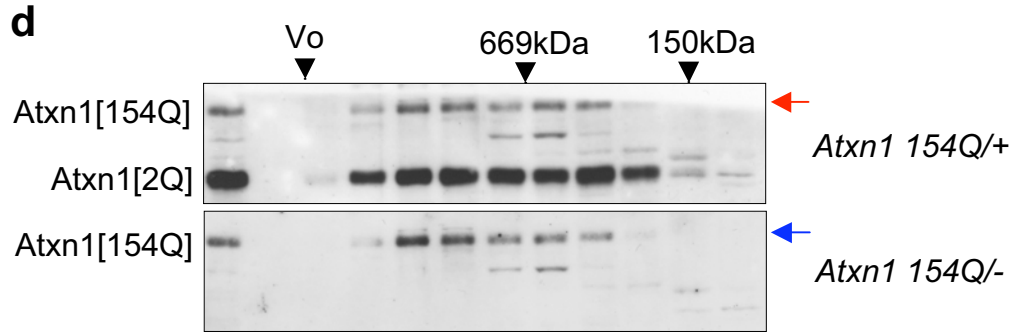
b



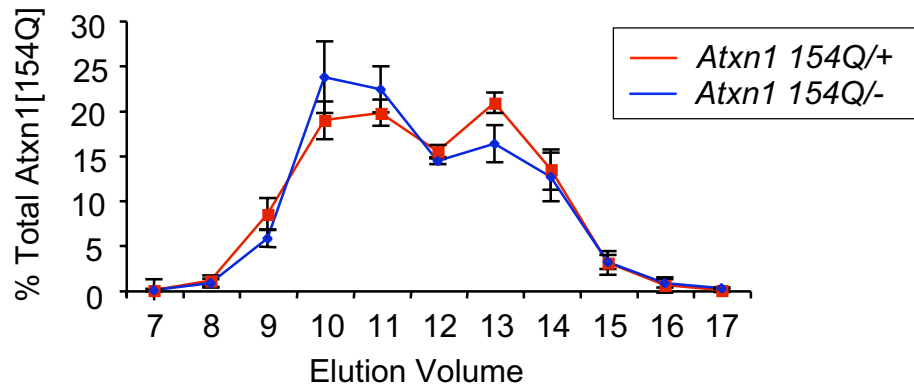
Supplementary Fig. S16-2



Supplementary Fig. S16-3



Elution Vol: Ex 7 8 9 10 11 12 13 14 15 16 17



Relative ratio of Vol. 10, 11 to Vol. 13

