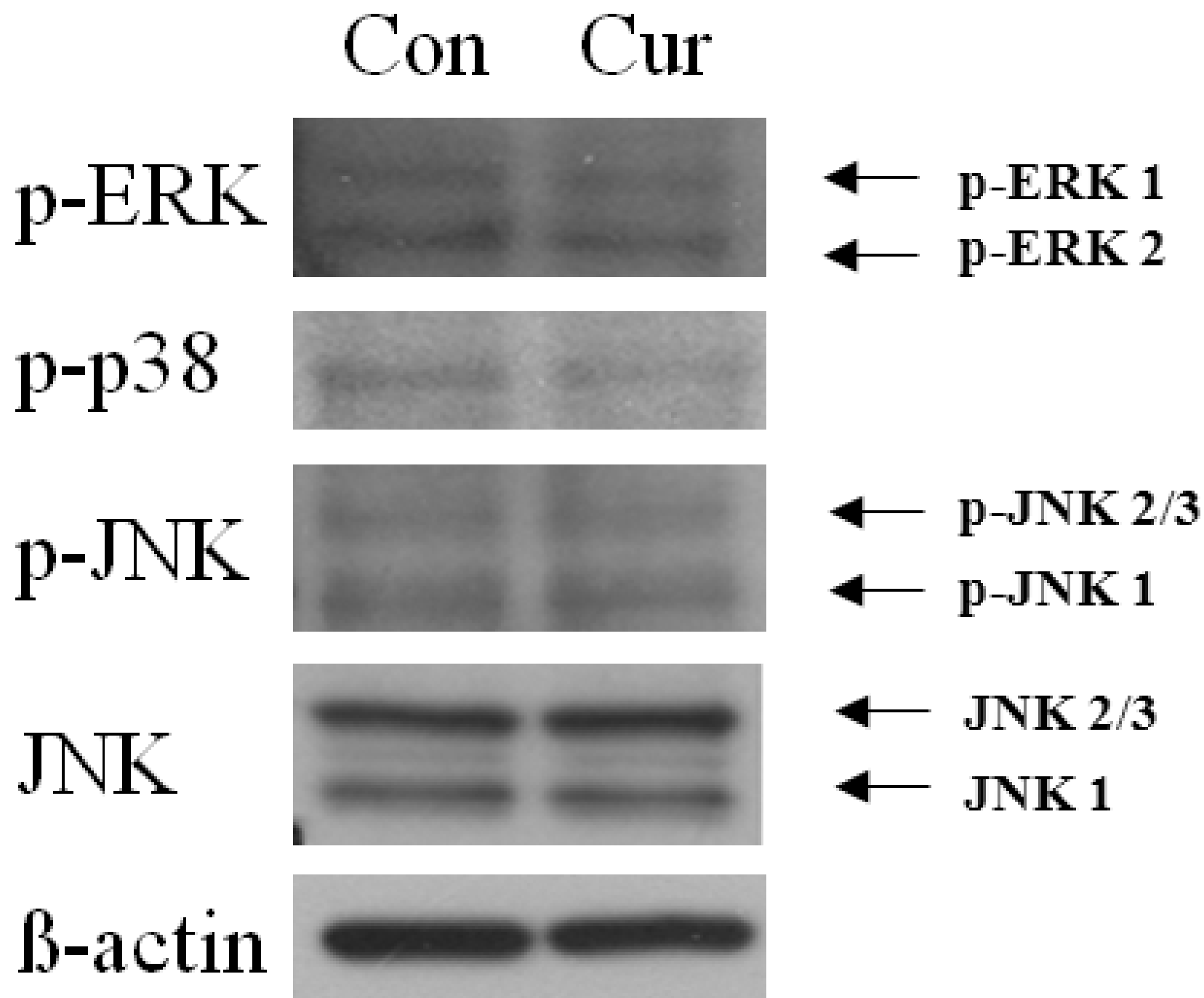


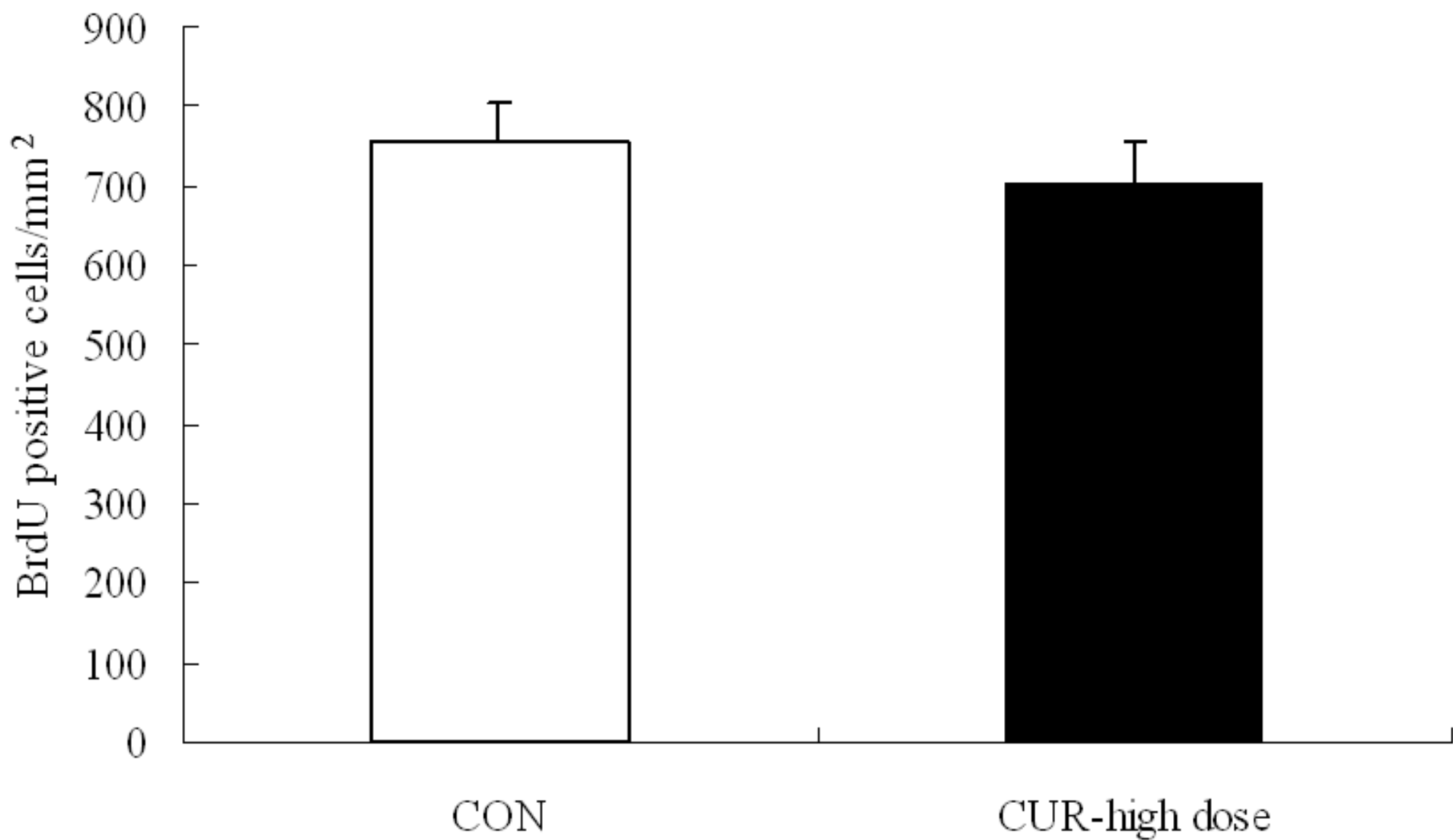
## FIGURE LEGNEDS

**Supplemental Figure 1.** MAPK activation at 24 hr after treatment with 500 nM curcumin.

**Supplemental Figure 2.** Quantitative analysis of the number of BrdU-positive cells in the dentate gyrus of control and high dose curcumin-treated mice at 1 day after last BrdU injection. CON, control; CUR-high dose, curcumin (20  $\mu$ mole/kg)

**Supplemental Figure 3.** Coronal brain sections of hippocampus were stained with cresyl violet (Nissl) to evaluate the neuronal loss and damage. There were no neuronal loss and neuronal degeneration in control and curcumin-treated mice. CON, control; CUR, curcumin; low dose, 500 nmole/kg; high dose, 20  $\mu$ mole/kg. Scale bar: 100  $\mu$ m.

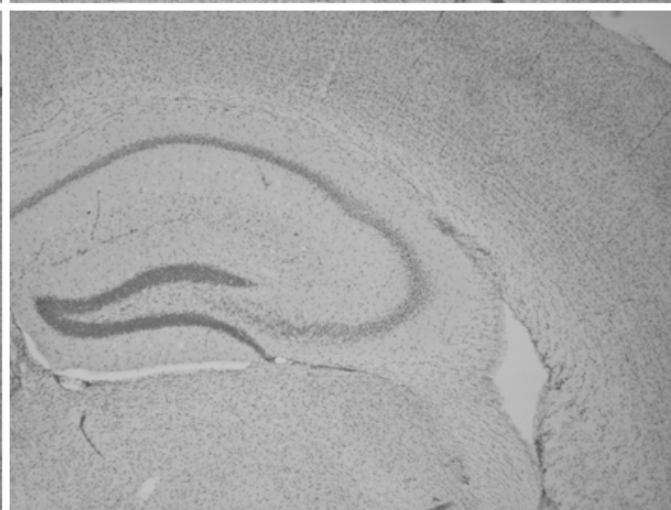
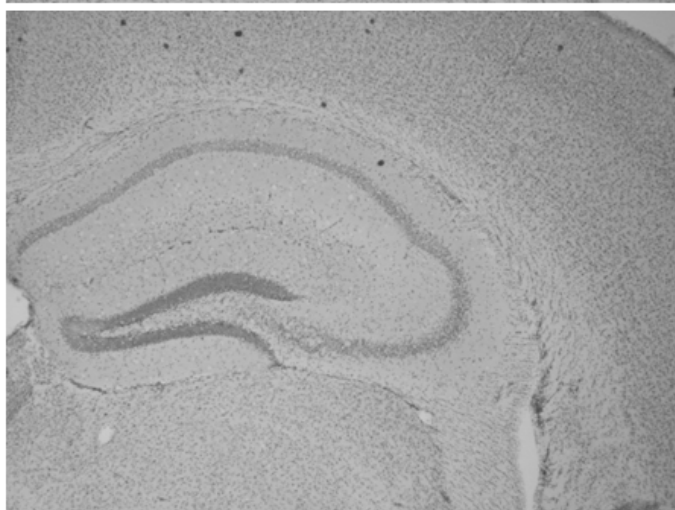




1 day



4 weeks



CON

CUR-low dose

CUR-high dose