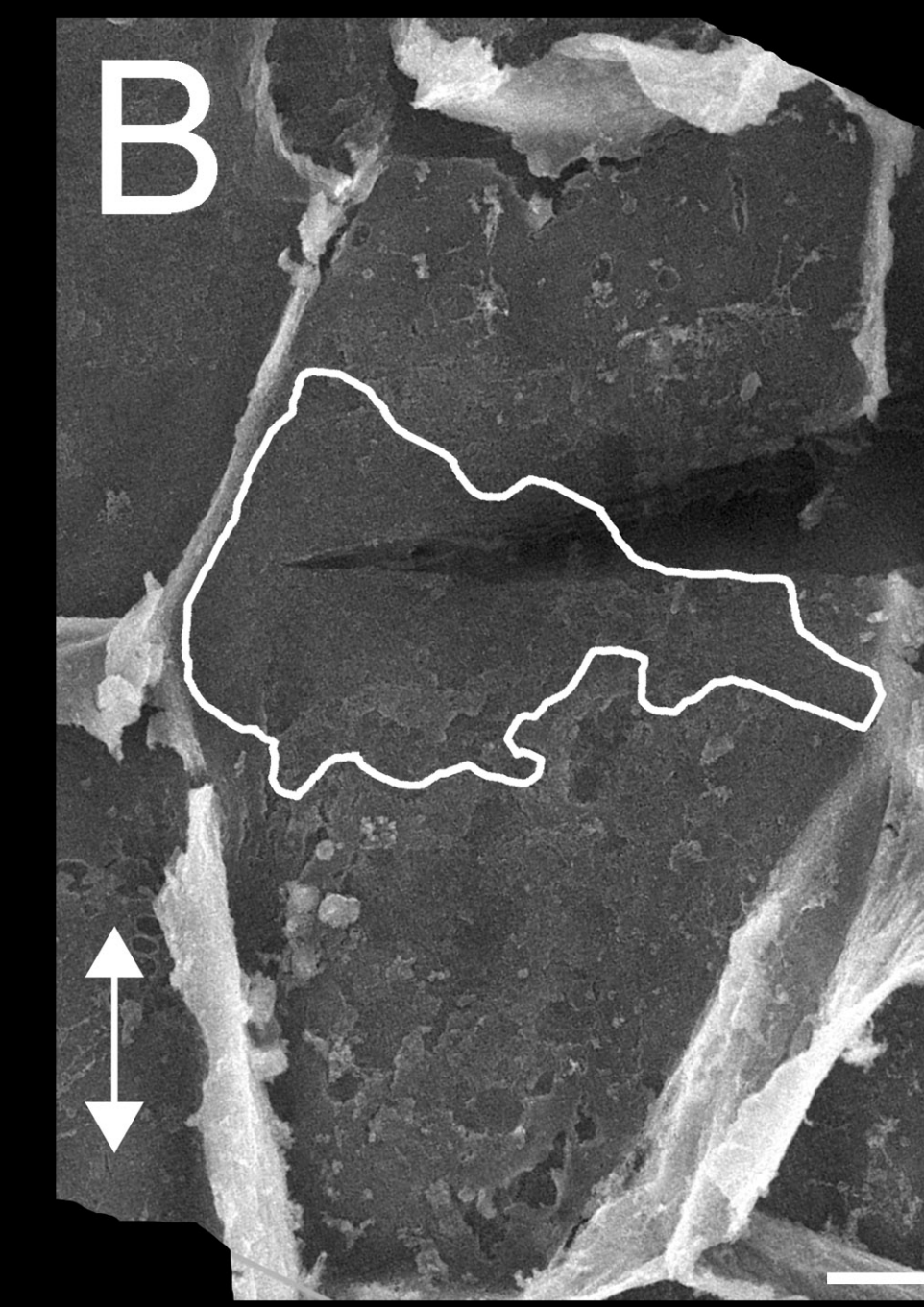
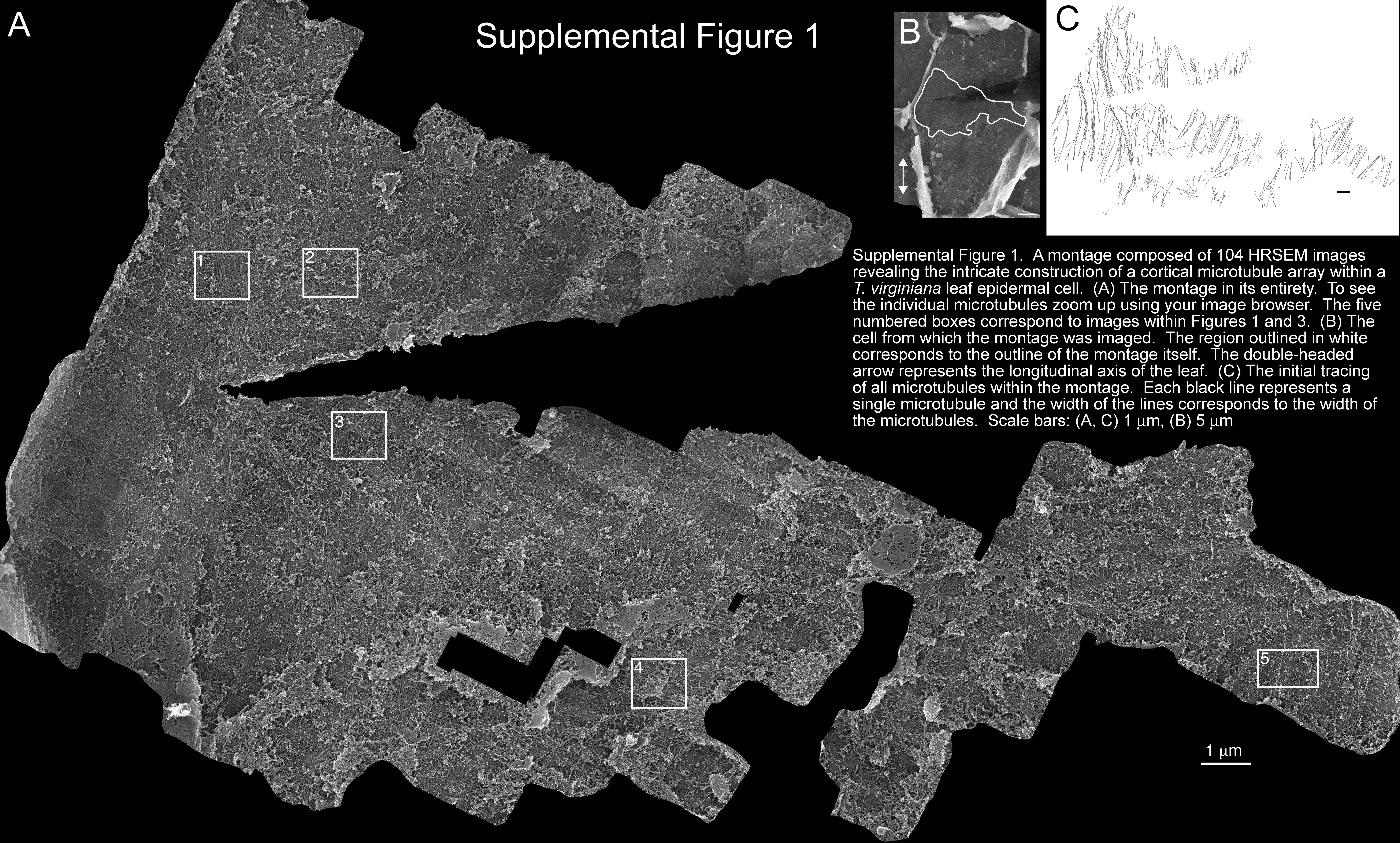


A

## Supplemental Figure 1



C



Supplemental Figure 1. A montage composed of 104 HRSEM images revealing the intricate construction of a cortical microtubule array within a *T. virginiana* leaf epidermal cell. (A) The montage in its entirety. To see the individual microtubules zoom up using your image browser. The five numbered boxes correspond to images within Figures 1 and 3. (B) The cell from which the montage was imaged. The region outlined in white corresponds to the outline of the montage itself. The double-headed arrow represents the longitudinal axis of the leaf. (C) The initial tracing of all microtubules within the montage. Each black line represents a single microtubule and the width of the lines corresponds to the width of the microtubules. Scale bars: (A, C) 1  $\mu\text{m}$ , (B) 5  $\mu\text{m}$ .