

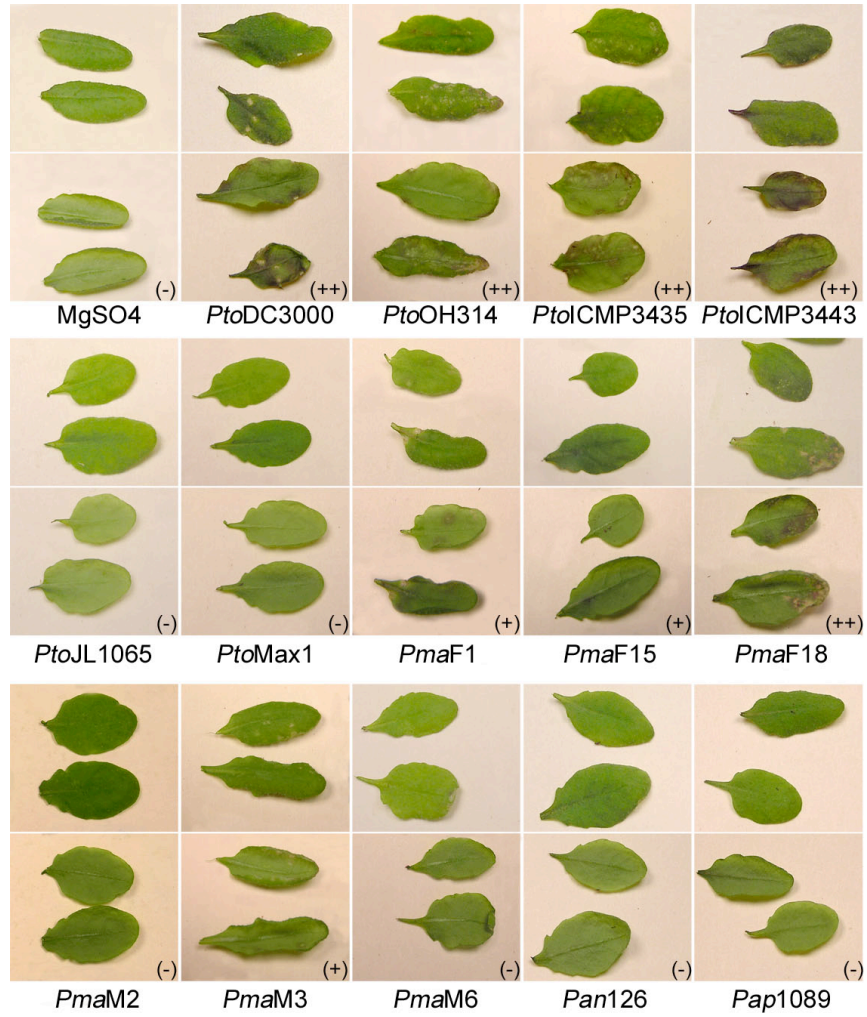
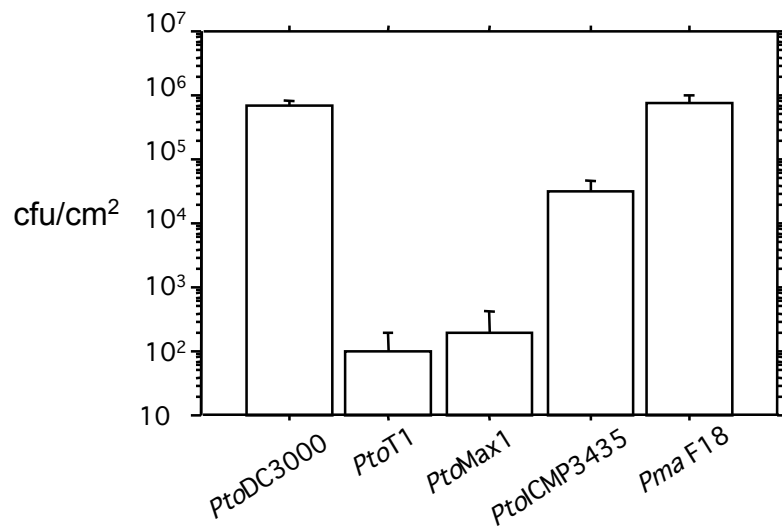
A**B**

Figure S1

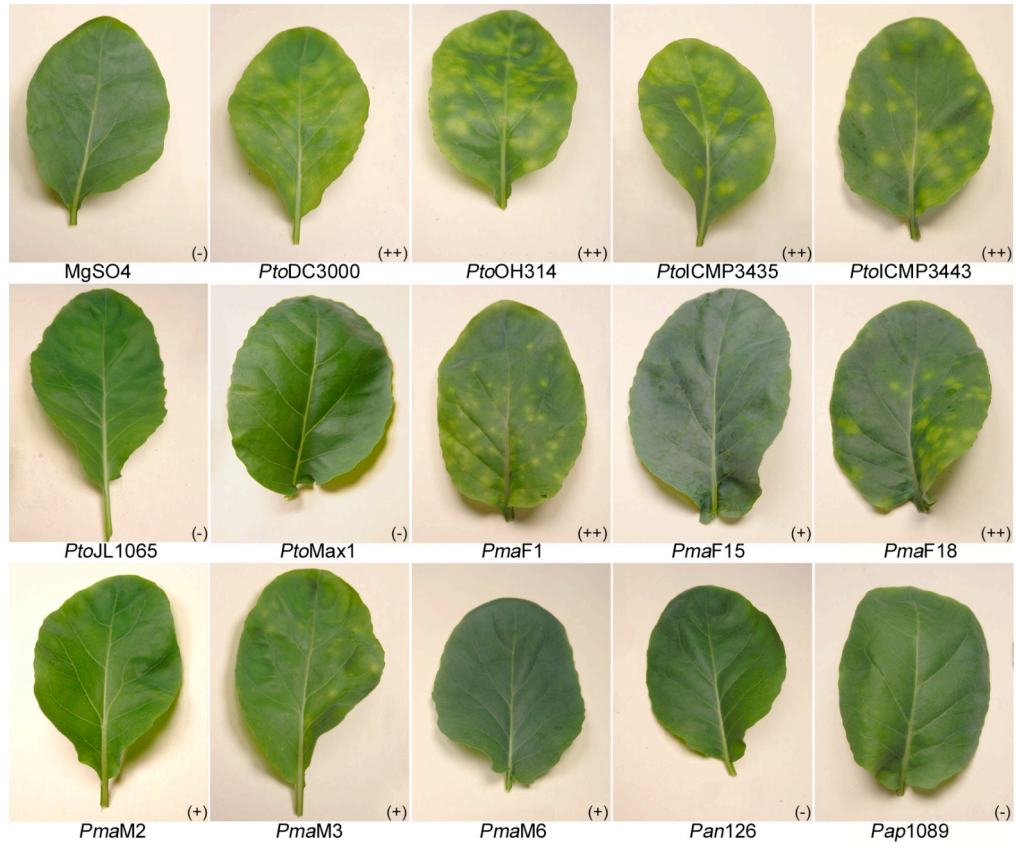
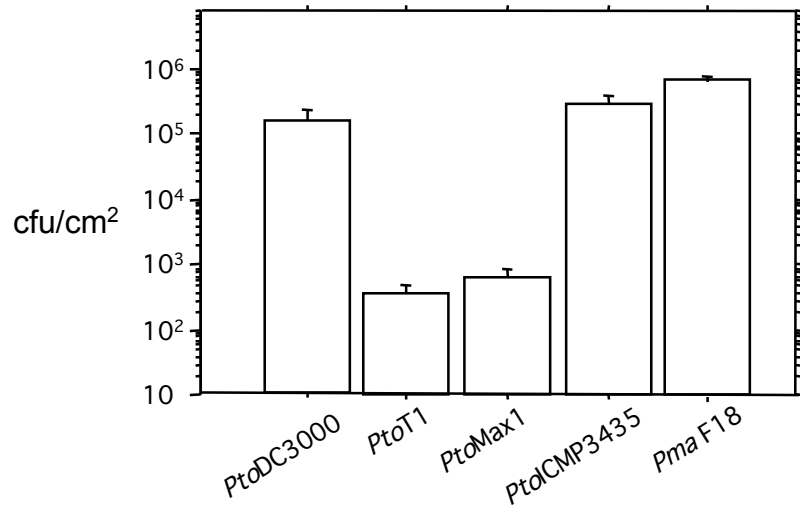
C**D**

Figure S1

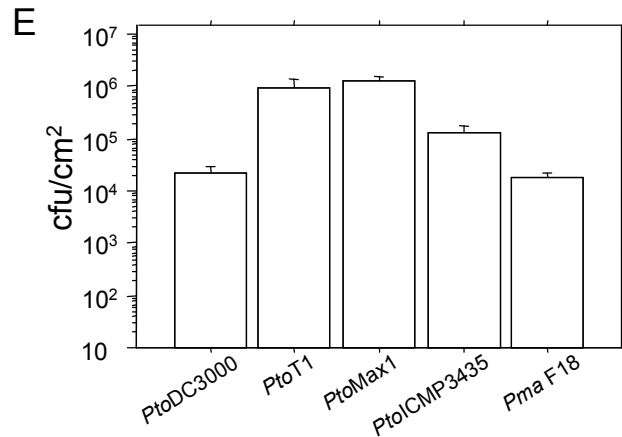


Figure S1. Virulence tests of representative *P. syringae* isolates on *A. thaliana*, cauliflower, and tomato.

A. thaliana ecotype ‘Columbia’ *rps2* plants, and cauliflower (*Brassica oleracea* var. *botrytis*)

cultivar ‘Early Snowball A’ plants were sprayed with bacterial suspensions of *P. syringae* isolates.

A and **C**: Photographs of representative leaves were taken one week later. Severe symptoms are

indicated by ‘+++’. Weak symptoms are indicated by ‘+’. Leaves with no symptoms are indicated by

‘-’. **B**, **D**, and **E**: Populations of representative *Pto* and *Pma* isolates were counted in four infected

leaf areas/isolate three days after infection of *A. thaliana*, cauliflower, and tomato respectively.