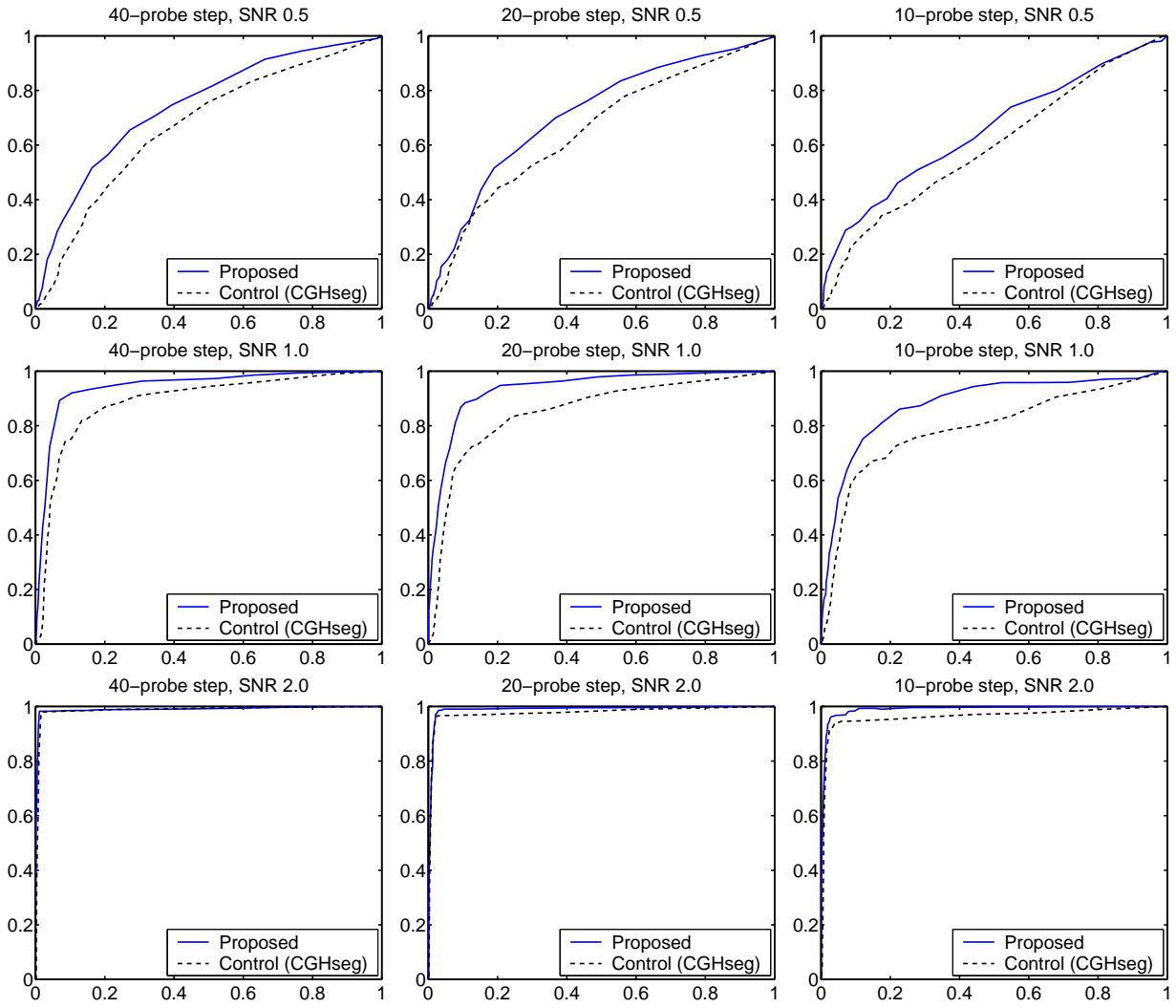
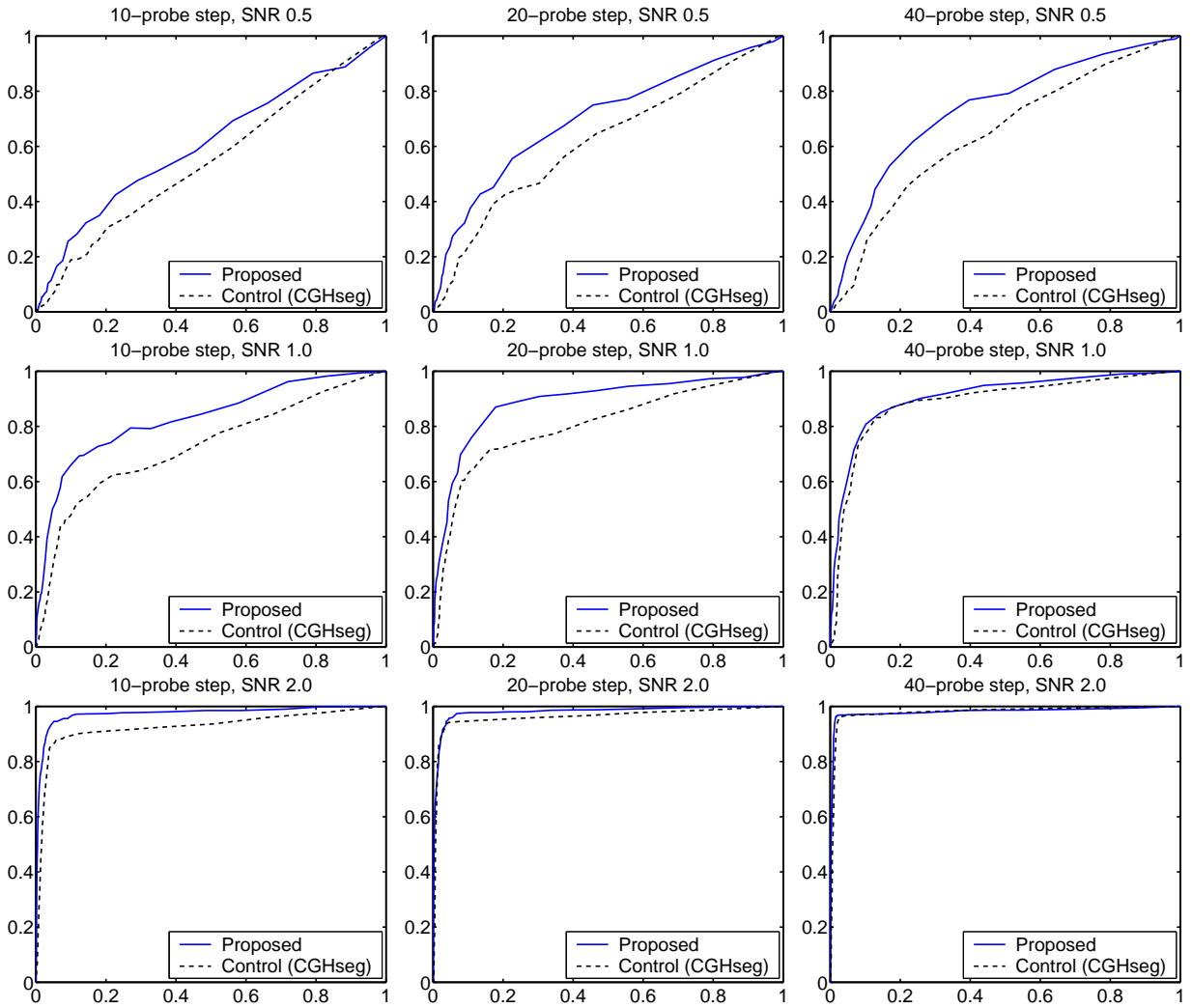


Additional file 1

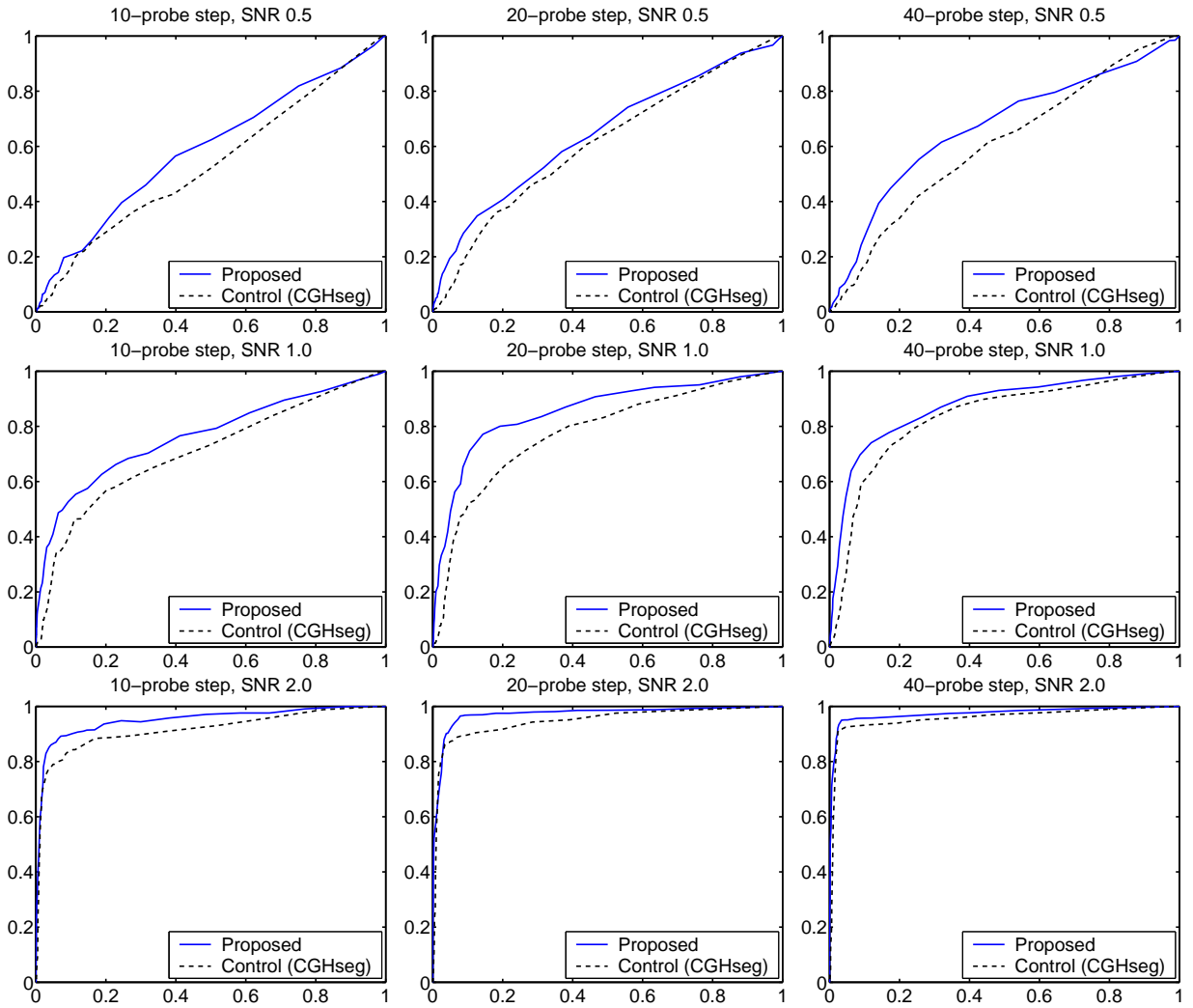
This document contains the full set of receiver operating characteristics (ROC) curves from the simulation study. The generation and interpretation of these results is described in the main paper.



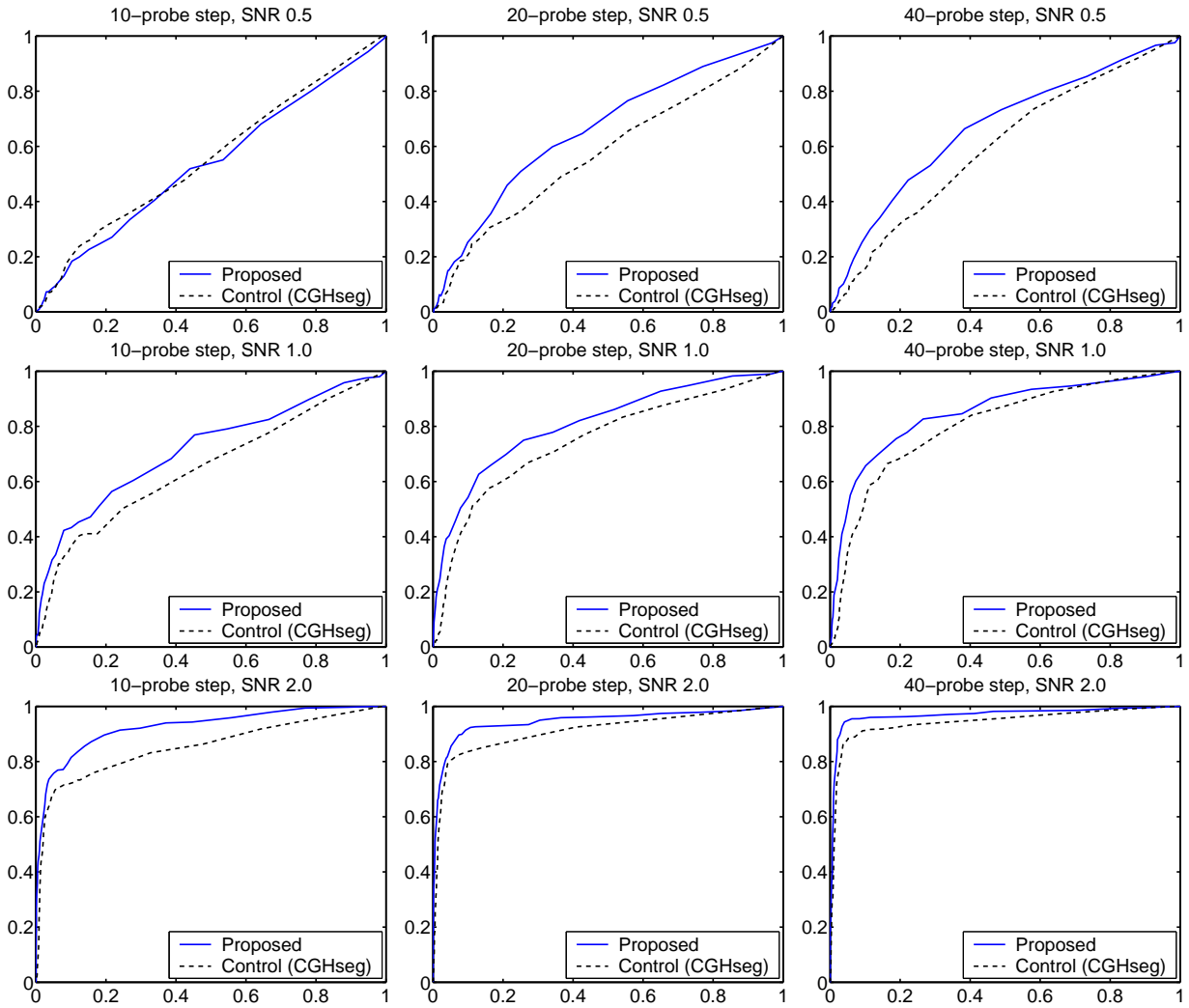
Receiver operating characteristics (ROC), $\pi = 0.0$



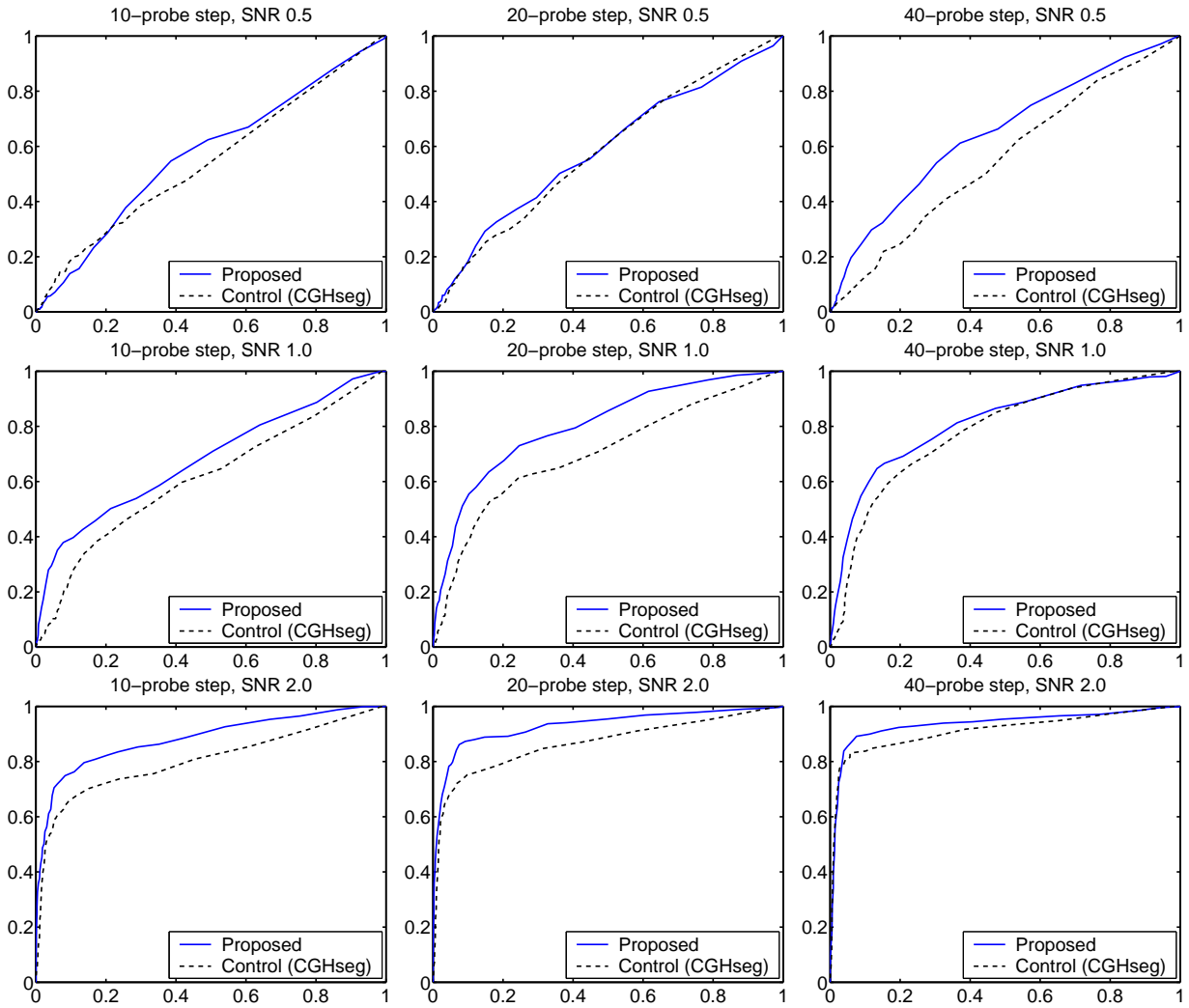
Receiver operating characteristics (ROC), $\pi = 0.1$



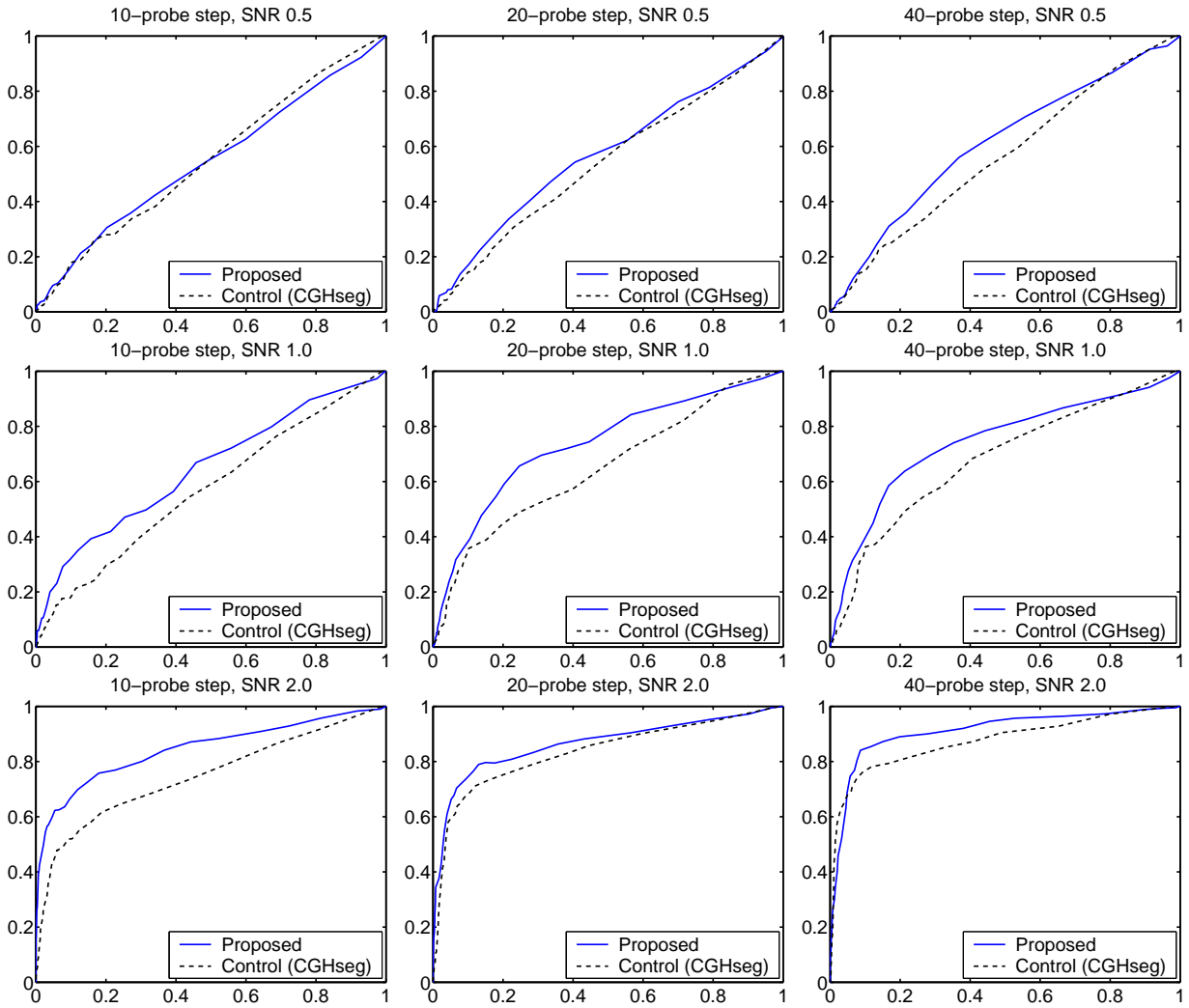
Receiver operating characteristics (ROC), $\pi = 0.2$



Receiver operating characteristics (ROC), $\pi = 0.3$



Receiver operating characteristics (ROC), $\pi = 0.4$



Receiver operating characteristics (ROC), $\pi = 0.5$