

Supplemental Figure Legends

Figure S1. *ofd1*⁺ and *ofd2*⁺ are Sre1N target genes.

(A) Wild-type and *sre1Δ* cells were grown ± oxygen for 6 hr. Total RNA (5 μg) was subjected to northern analysis with the indicated ³²P-labeled probes. α-tubulin (*tub1*⁺) mRNA served as a loading control. (B) Wild-type and *ofd1Δ* cells were grown ± oxygen for 6 hr. Whole cell lysates were subjected to western blot analysis using anti-Ofd1 IgG.

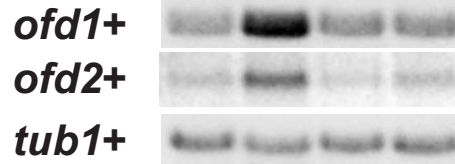
Figure S2. *Ofd2* does not regulate Sre1N.

sre1N and *sre1N ofd2Δ* cells were grown ± oxygen for 6 hr. Whole cell lysates were subjected to western blot analysis using anti-Sre1 IgG.

Figure S1

A Northern Blot

Strain	<i>WT</i>		<i>sre1</i> Δ	
O ₂ (6 hr)	+	-	+	-
Lane	1	2	3	4



B Western Blot

Strain	<i>WT</i>		<i>ofd1</i> Δ	
O ₂ (6 hr)	+	-	+	-
Lane	1	2	3	4

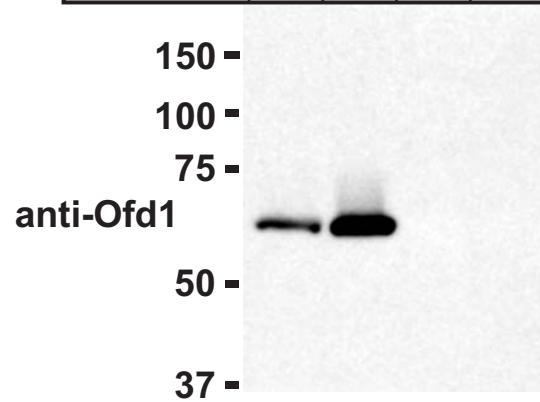
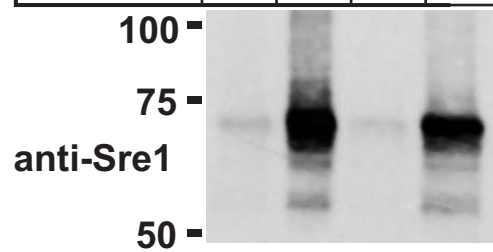


Figure S2

Western Blot

Strain	<i>sre1N</i> <i>ofd2</i> ⁺		<i>sre1N</i> <i>ofd2</i> Δ	
O ₂ (6 hr)	+	-	+	-
Lane	1	2	3	4



Supplementary Table 1.

Oligonucleotide sequences

Strain Construction Oligonucleotides	5' → 3'
<i>sre1N</i> Forward	AATTCAATTTCTCTTTATTGTTGGATTTTTTAACTCGCTGTTAAATTCGCTTGGT TCTAGCTGGAAATTTTGTAAATATGCAAAGCTCAATTCGTC
<i>sre1N</i> Reverse	TCATGGAAAATAATAAGGTAGTTGCAATAGATGAGCGTTGTATACTAACTGTTT TCAAAGCTCGAGAATCGACAATTTATGGAGACATAAGAAAAGGTG
<i>ofd1Δ::KanMX6</i> Forward	CTATTGGGAGTTTGCCAACCACTAAAATTTTTACCTAATTGCACATTATATTCA GGTGAAATCTCAAATATAAAAACGGGCGGATCCCCGGGTTAATTAA
<i>ofd1Δ::KanMX6</i> Reverse	ACAAGGGAAAACTTTCAAAAATAAGACAAAAAATTAGAGAAAAAAAATTA AGTAACCCCTTTAAGTATATGTTGCCTGAATTCGAGCTCGTTTAAAC
<i>ofd2Δ::KanMX6</i> Forward	TGCTTTCTAACAAAATTTCAAAGTGAACATAGAACAGATGCTACGGATAGTTTA GCAATCTTTTCGTTTCAGTTTAGAAACGGATCCCCGGGTTAATTAA
<i>ofd2Δ::KanMX6</i> Reverse	TAGTTGGCATGAAATTATTTTTTTGTGAACGACAACGAACGATTAGATATGATA TTTGAAAGCCAAAAAATGCAATTACGAATTCGAGCTCGTTTAAAC
<i>sre1::ura4⁺</i> Forward	CTTGTAACAAAATTTGATAGACTTAGTTTACAGCACACTAAATATTTATAAAA TGTCTTTGATACGCCACGGAATTTTCGCCAGGGTTTTCCAGTCACGAC
<i>sre1::ura4⁺</i> Reverse	TAAAAAATTTAAAATCGATCACCCGATAAGCAAAGTTAGGATTGCTCGAGTA TGGTAATGGATGAAAGAGAAAAGTCGTAGCGGATAACAATTTACACAGGA
SRE2+3F	AGGATAAGTAATATACAAAA
SRE2+3R	ATTTAACAAAATTTCCAGCT
Northern Probe Oligos	
<i>ofd1⁺</i> Forward	GACGATGTTATTGGTACCAG
<i>ofd1⁺</i> Reverse	CATCGATGATTCGCTTAAGG
<i>ofd2⁺</i> Forward	TGCTAGAAGTAGATCAGGAG
<i>ofd2⁺</i> Reverse	AGGAATTTTCATGAAACCAGTC
<i>tub1⁺</i> Forward	CCATTCACGTTGGCCAAGC
<i>tub1⁺</i> Reverse	ATACACAGAAAATTGAAGCTTTG
<i>sre1N⁺</i> Forward	GGTATTCATATGATGCAAAGCTCAATTCGTC
<i>sre1N⁺</i> Reverse	GGAATCTTAATTTGACATATCAGCTGAAGGA