

Supplemental Figure Legends

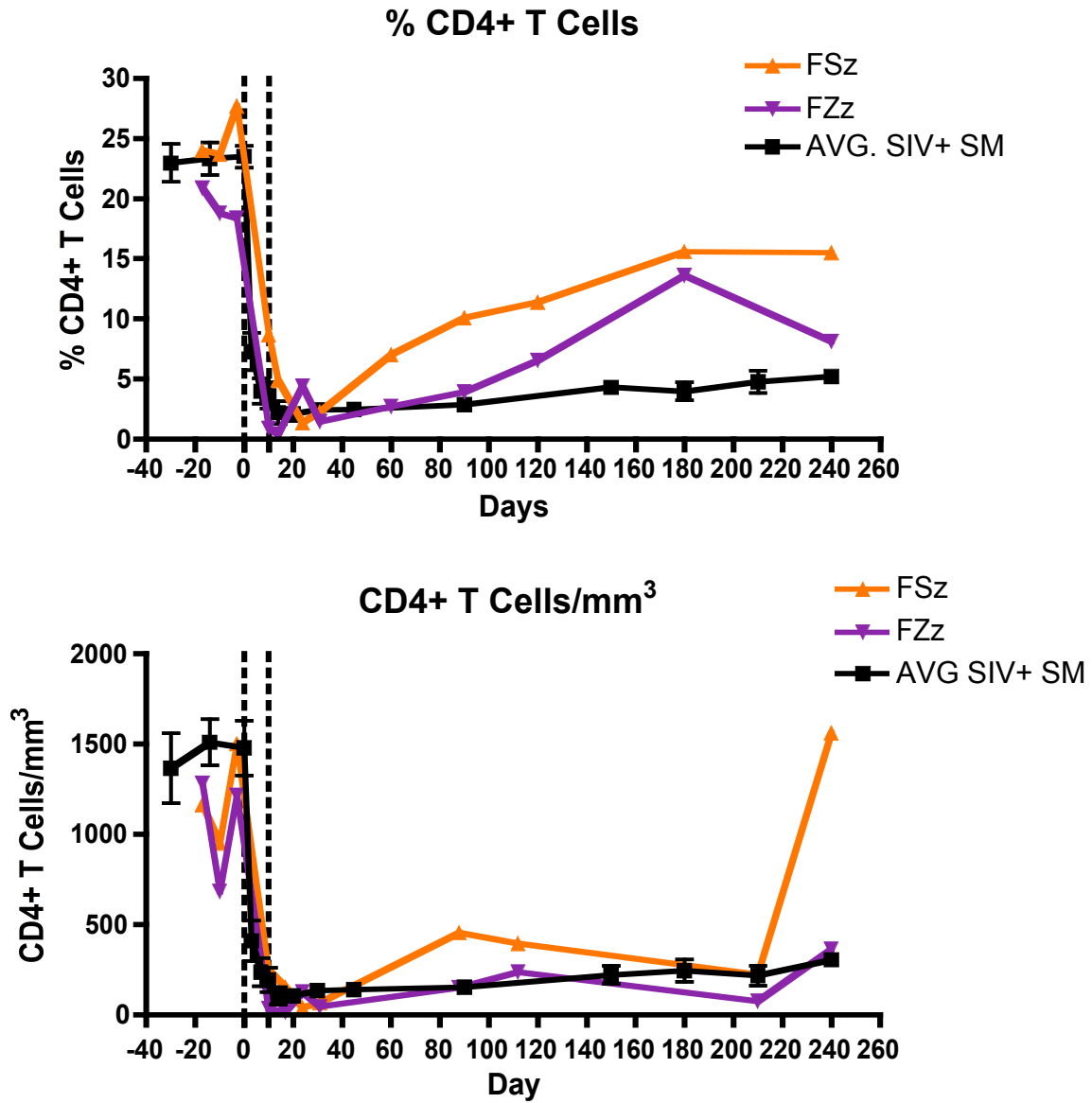
Supplemental Figure 1. *In vivo* CD4+ T cell depletion in SIV uninfected SMs. The longitudinal assessment of the percent of CD4+ T cells (top) and the absolute number of CD4+ T cells (bottom) is compared here in SIV+ vs. SIV- animals. Orange and purple lines represent SIV- animals, while black line represents the average of 6 SIV+ SMs (+/- SD). Dotted lines represent period of CD4 depleting treatment.

Supplemental Figure 2. CD4 depletion in SIV uninfected SMs results in an increase in activation of CD4+ T cells. Longitudinal assessment of the percent of CD4+Ki67+ T-cells in both individual SIV- animals (purple and orange lines) , compared to the average of all SIV+ animals (black line) through 240 days post-depletion.

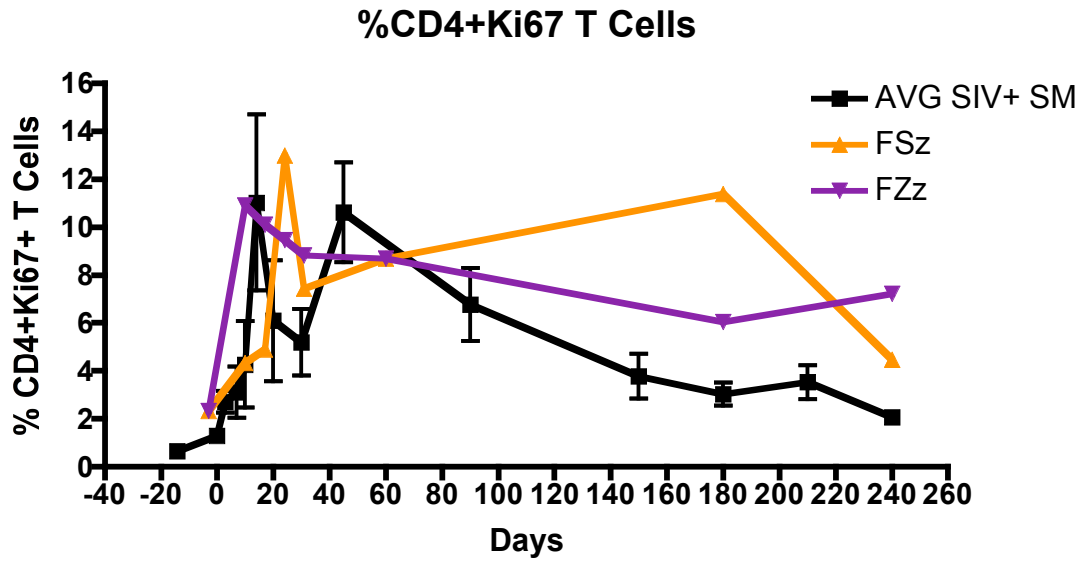
Supplemental Figure 3. The absolute number of CD4+CCR5+ T cells increases transiently after CD4 depletion but does not correlate with viral load. Longitudinal assessment of the number of CD4+CCR5+ T cells in individual SIV-infected sooty mangabeys as measured by flow cytometry. Surface staining of CD4+CCR5+ T cells does not correlate with viral load. Dotted lines represent period of CD4 depleting treatment.

Supplemental Figures

Supplemental Figure 1



Supplemental Figure 2



Supplemental Figure 3

