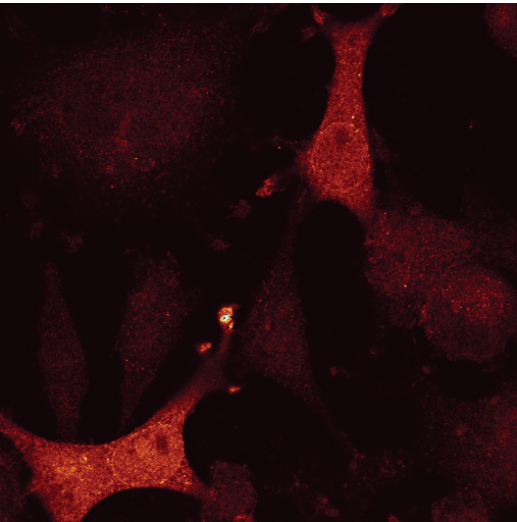


Supplementary Figure 1 Specificity of the anti NS2 antiserum for immunofluorescence. A9 cells transfected or untransfected with pdBMVp for 48h were stained with α -NS2 and α -capsid antibodies. While some background staining is observed in non-transfected cells, specific NS2 signal is detected in nucleus, cytoplasm and nuclear periphery.

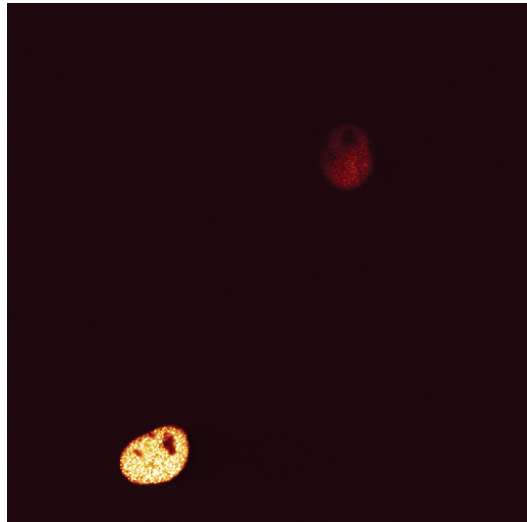
Supplementary Figure 2 Significant nuclear accumulation of NF κ B only occurs at relatively high NS2 expression levels. (A) L929 cells were transfected with GFP-NS2 and stained for NF κ B. Nucleocytoplasmic distribution of NF κ B is plotted as a function of total GFP fluorescence (background corrected and normalized to maximum). Solid green line represents mean of untransfected cells. Dashed lines represent 2 standard deviations plus or minus this mean. (B) Examples of cells with various levels of total GFP fluorescence.

Supplementary Figure 3 Colocalization of capsid and N-terminally exposed VP2 (2Nt) in SAABs. A9 cells transfected with pdBMVp (WT) for 48h. Cells were fixed before permeabilization (- pre-extraction) or permeabilized and subsequently fixed (+ pre-extraction). Colocalization of total capsid (Capsid) and DNA-filled capsid (2Nt) either without pre-extraction (top) or with pre-extraction (bottom).

Engelsma et al.,
Supplementary Figure 1



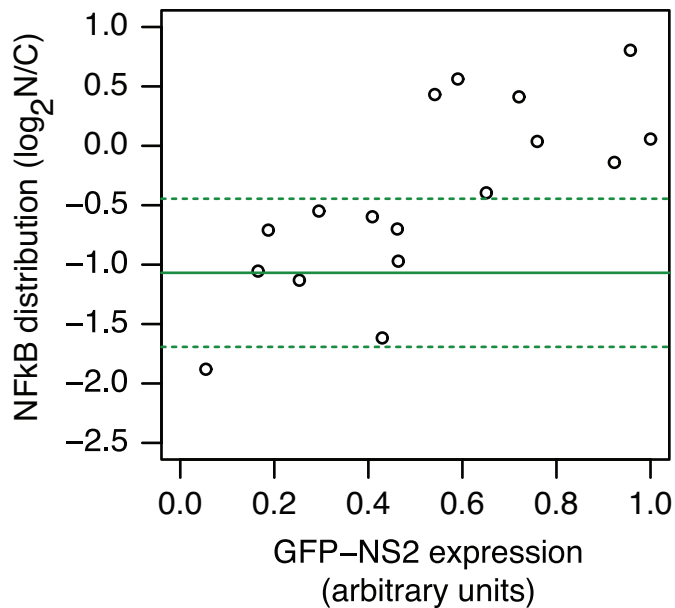
α -NS2



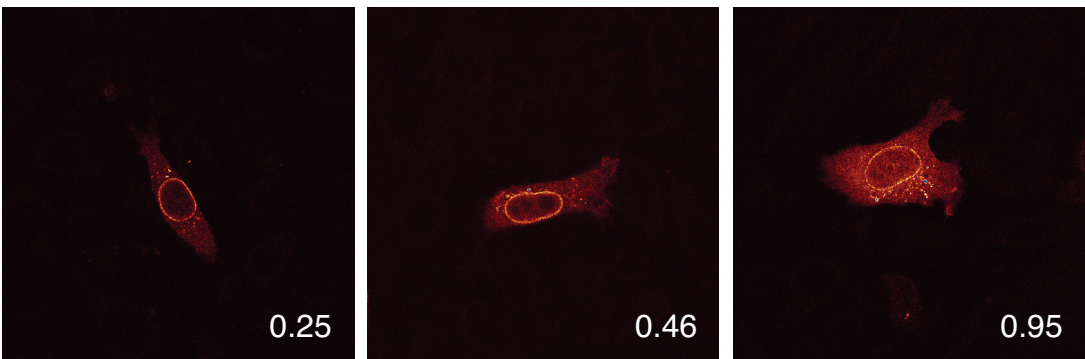
α -capsid

Engelsma et al.,
Supplementary Figure 2

A



B



Engelsma et al.,
Supplementary Figure 3

