

Coupled Global and Targeted Proteomics of Human Embryonic Stem Cells during Induced Differentiation.

Anastasia K. Yocum, Theresa E. Gratsch¶, Nancy Leff¶, John R. Strahler, Christie L. Hunter‡, Angela K. Walker, George Michailidis*, Gilbert S. Omenn †, K. Sue O'Shea¶, Philip C. Andrews

Supplementary Figures

Department of Biological Chemistry, *Department of Statistics, ¶Department of Cell and Developmental Biology, †Center for Computational Medicine and Biology, Departments of Internal Medicine and Human Genetics, University of Michigan, Ann Arbor, MI 48109

‡ Applied Biosystems, Foster City, CA

Running Title: Discovery proteomics to target verification with multiple reaction monitoring

Contact:

Anastasia K. Yocum
1195 N. Ingalls Bldg.
Ann Arbor, MI 48105
215-284-3065
akyocum@umich.edu

Figure 1: Phase contrast micrograph illustrating the appearance of two colonies of BG01 hESCs growing on irradiated MEFs (A). As a control to demonstrate specificity of the primary antibodies, cells were exposed to Cy3-conjugated secondary antibody alone (B, red fluorochrome).

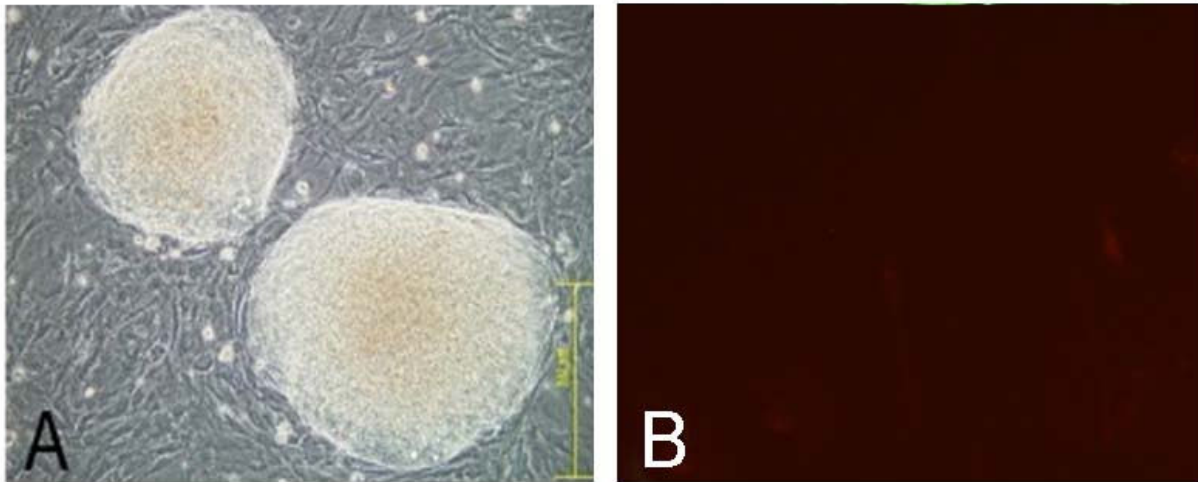


Figure 2: Western blotting showing differential expression of CRMP4 and cytokeratin-8 in noggin treatment compared with control cells. Although, slight in expression, CRMP4 expression shows an increase after treatment with noggin while cytokeratin-8 shows little if no decrease. These data further substantiate both the global and the targeted MRM proteomics data shown in Table 3. Loading control of GAPDH shown for comparison.

