

Supplemental Figure S1. Separation of plastoglobules, envelopes and thylakoids of WT chloroplasts by ultracentrifugation on sucrose gradient and Western blots of VTE1, CeQORH and LHCP in each fraction. A) Separation of plastoglobules, envelopes and thylakoids by ultracentrifugation on sucrose gradient. The membrane fractions were prepared from intact chloroplasts isolated from WT tobacco leaves. B) Western blots of VTE1, CeQORH and LHCP in each fraction. C) Western blots of VTE1 and CeQORH in envelope fractions washed by dilution in 10 mM MOPS-NaOH, pH 7.8, 4 mM MgCl₂ buffer and ultracentrifuged 110000 g 1 h.

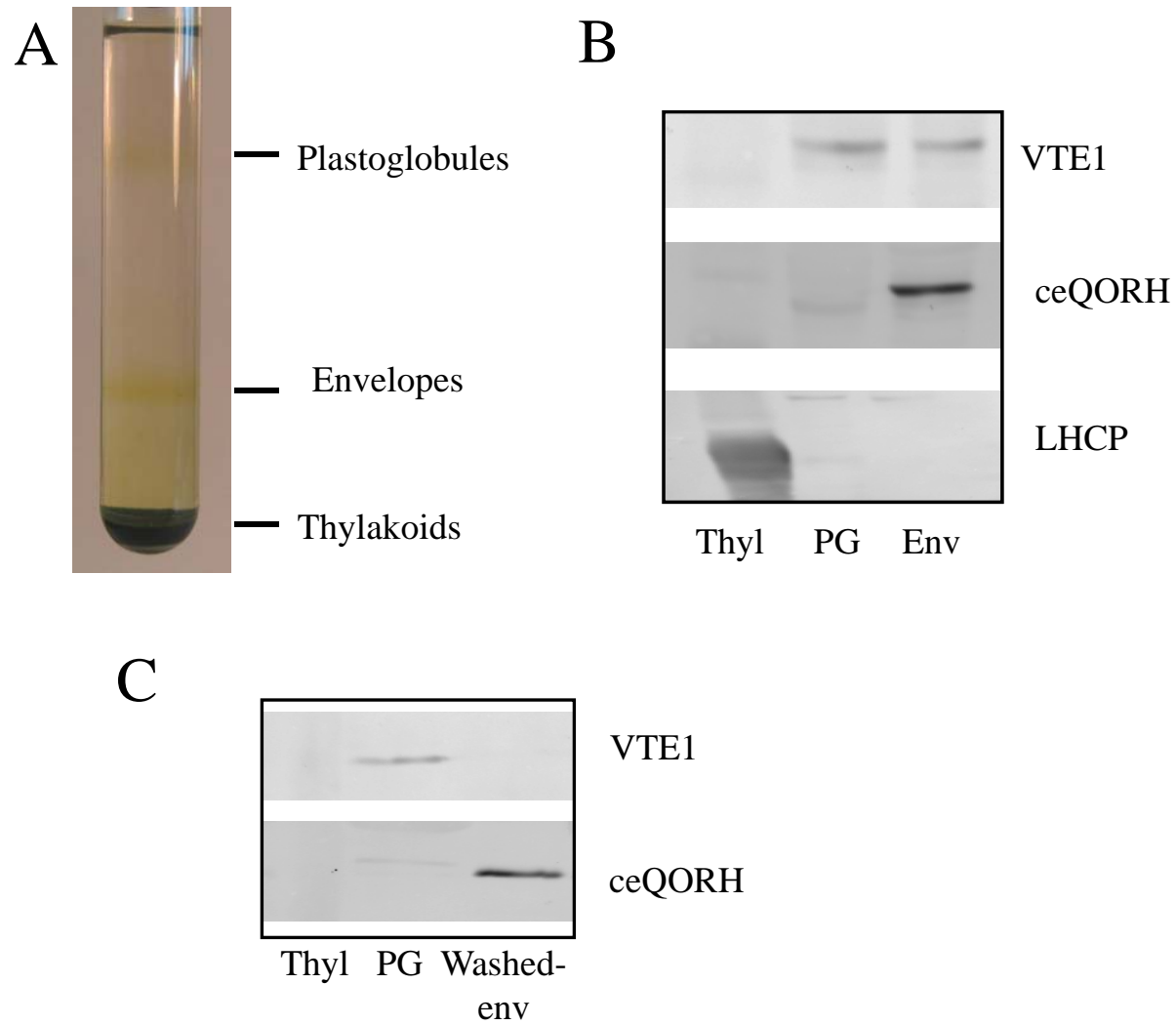


Fig. S1