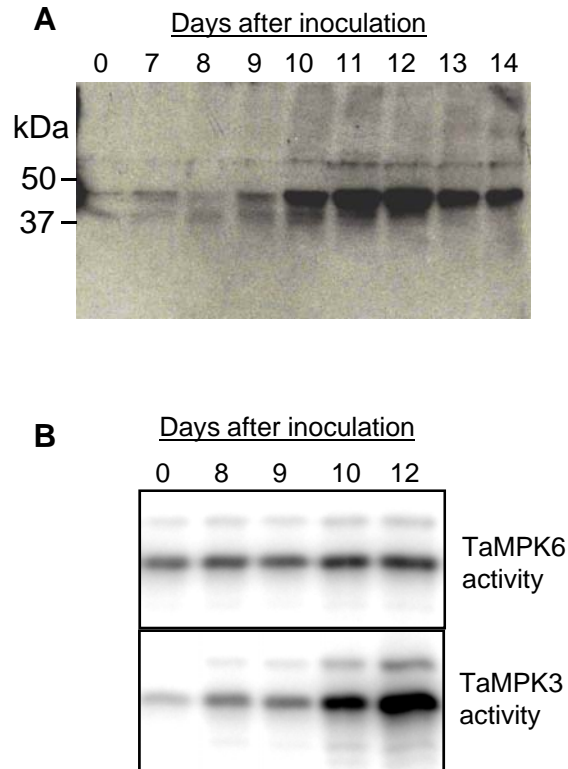


## Rudd et al., Supplementary Figure S4



### Supplementary Figure 4.

Post-translational activation of TaMPK3 is also observed during symptom development in a compatible interaction between wheat cv. Riband and isolate IPO323. (A) Western blot analysis of the activation of ERK-type MAPKs (anti-<sup>P</sup>TEY<sup>P</sup>) across the time course. (B) Coupled immunoprecipitation-protein kinase assays identify TaMPK3 as an ERK-type wheat MAPK that is post-translationally activated coincident with the appearance of PCD during this compatible interaction. TaMPK6 is not activated during this response.