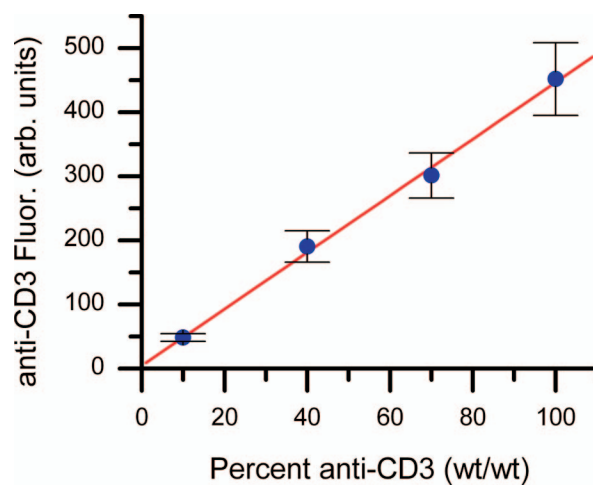
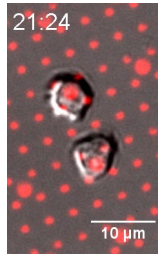


# Supporting Information

Shen *et al.* 10.1073/pnas.0710295105



**Fig. S1.** Anti-CD3 was labeled with Alexa 568 and diluted with unlabeled TS2/4 at the indicated fractions. Data are average  $\pm$ SD fluorescence intensities from a representative experiment.



**Movie S1.** T cell interaction with costimulation arrays. This surface contains a pattern of 2- $\mu\text{m}$ -diameter anti-CD3 features overlaid with an array of 1- $\mu\text{m}$ -diameter anti-CD28 dots, with both patterns shown in red. Images were taken at 10-sec intervals. The time stamp indicates min:sec. (Scale bar: 10  $\mu\text{m}$ .)

[Movie S1 \(MOV\)](#)