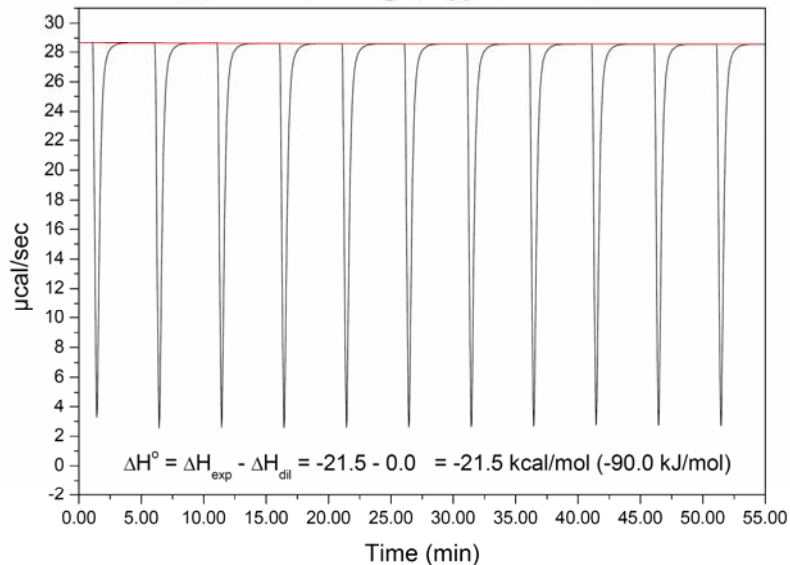


CB[7] (0.57 mM) + FcCH₂N(CH₃)₃¹⁺ (4.18 mM)



$$\Delta H^\circ = \Delta H_{\text{exp}} - \Delta H_{\text{dil}} = -21.5 - 0.0 = -21.5 \text{ kcal/mol} (-90.0 \text{ kJ/mol})$$