

Supplementary Data

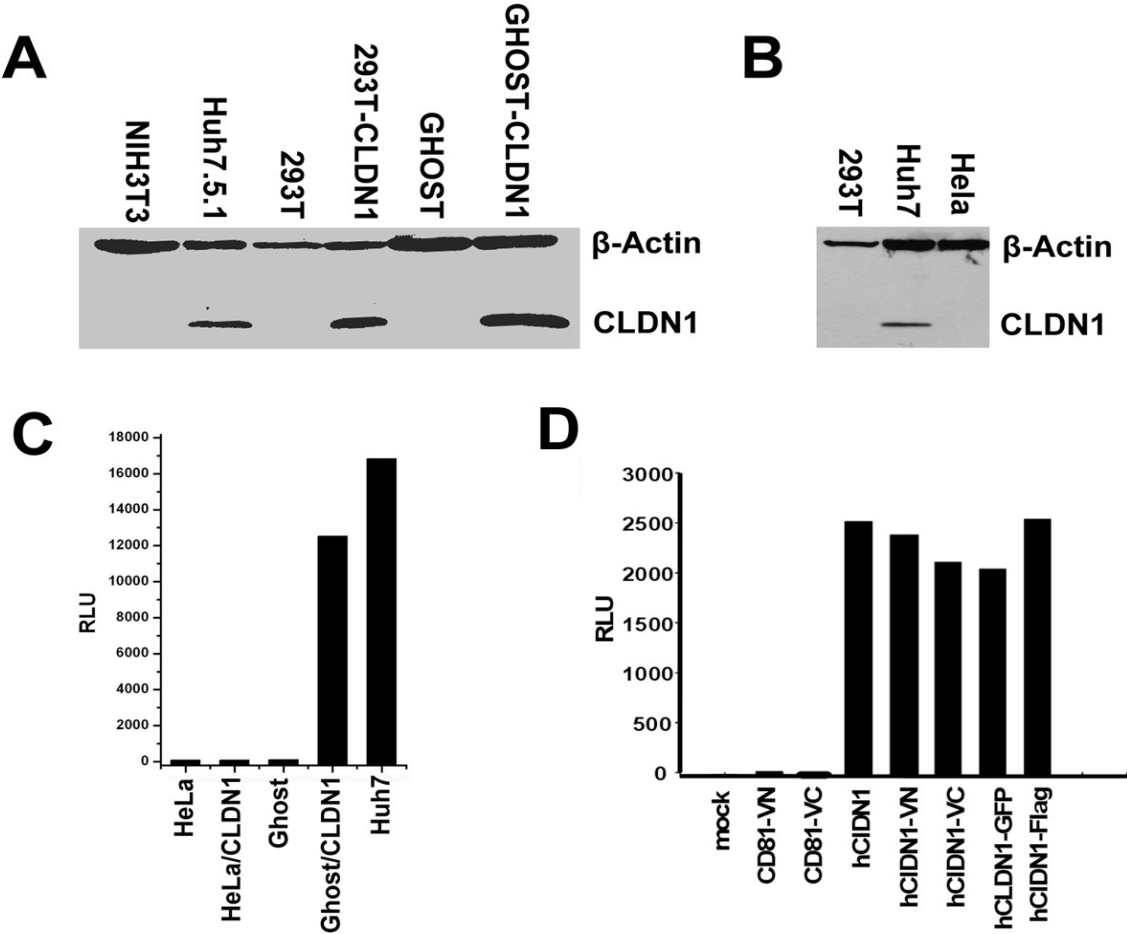
Supplementary Fig. 1. (A) Profiling CLDN1 expression in various cell lines by Western analysis. Detectable level of endogenous CLDN1 was only found in Huh7.5.1 (A) and Huh 7 (B) cells. Ghost-CLDN1 and 293T-CLDN1 stable cell lines express CLDN1 to a level that is comparable to that in Huh7. (C) Ghost, Ghost-CLDN1, HeLa, and HeLa-CLDN1 stable cells were pre-seeded in a 24-well plate and then spin infected with HCVpp. Luciferase activity was determined 48 hours after infection. Huh7 was included as the positive control. (D) Tagged CLDN1s rendered 293T cells susceptible to HCVpp. A representative of three independent experiments was shown here.

Supplementary Fig. 2. (A) 10^5 HepG2 cells were transfected with 1 μ g of wild type CD81, VN- or VC-CD81. Tagged CD81s rendered HepG2 cells susceptible to HCVpp infection at a comparable efficiency as untagged version did. (B) HepG2 cells were transfected with the full-length CD81 (red line), VN-CD81 (green line), and VC-CD81 (grey line). Untransfected (black line) and transfected cells were then stained for surface CD81 expression and quantified on the flow cytometer.

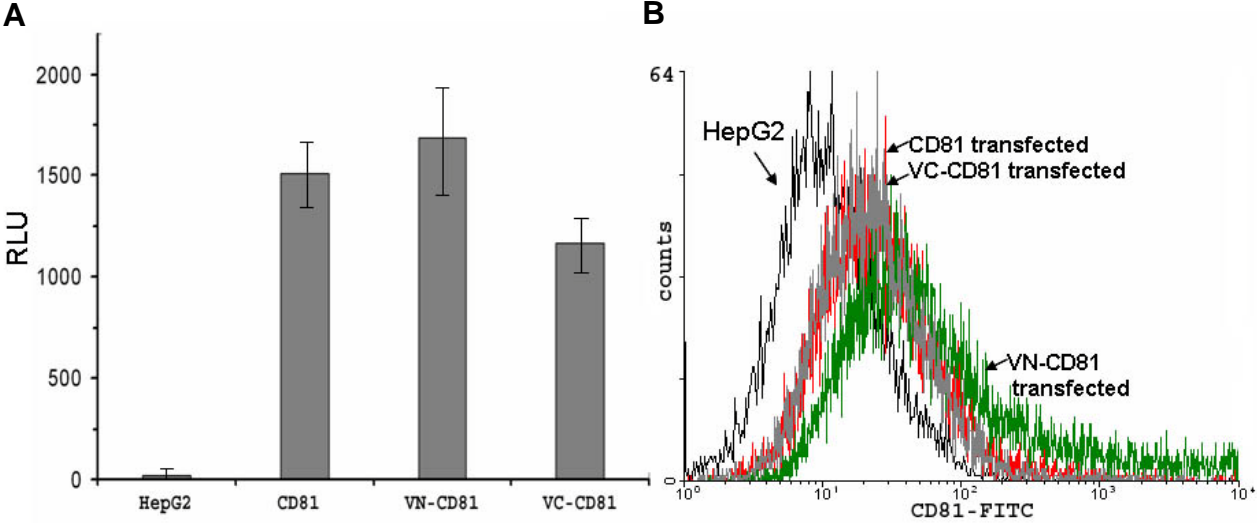
Supplementary Fig. 3. Entry of HCVpp to Caco-2 but not HeLa-CLDN1 stable line. Caco-2 (A) cell or HeLa-CLDN1 stable cell line (B) were infected with HCVpp and then luciferase assay was performed. Huh7 cells were included as a positive control and HeLa-CLDN4 stable line was used as the negative control. A representative of two independent experiments was shown here.

Supplementary Fig. 4. Increase in viral attachment to GHOST cells in the presence of CLDN1. 4×10^5 parental GHOST cells and GHOST cells stably expressing CLDN1 (GHOST-CLDN1) were incubated with HCVcc (MOI 10) in a 12-well plate at 4 °C for 1 hour to synchronize infection. Uninfected or infected cells were fixed in 2% Paraformaldehyde and stained with anti-E2 antibody (H47) followed by a FITC-conjugated secondary antibody staining. Samples were analyzed on a Coulter XL flow cytometer. The percentage of E2 positive cells and the mean fluorescence intensity (MFI) were indicated in the upper right corner of each histogram.

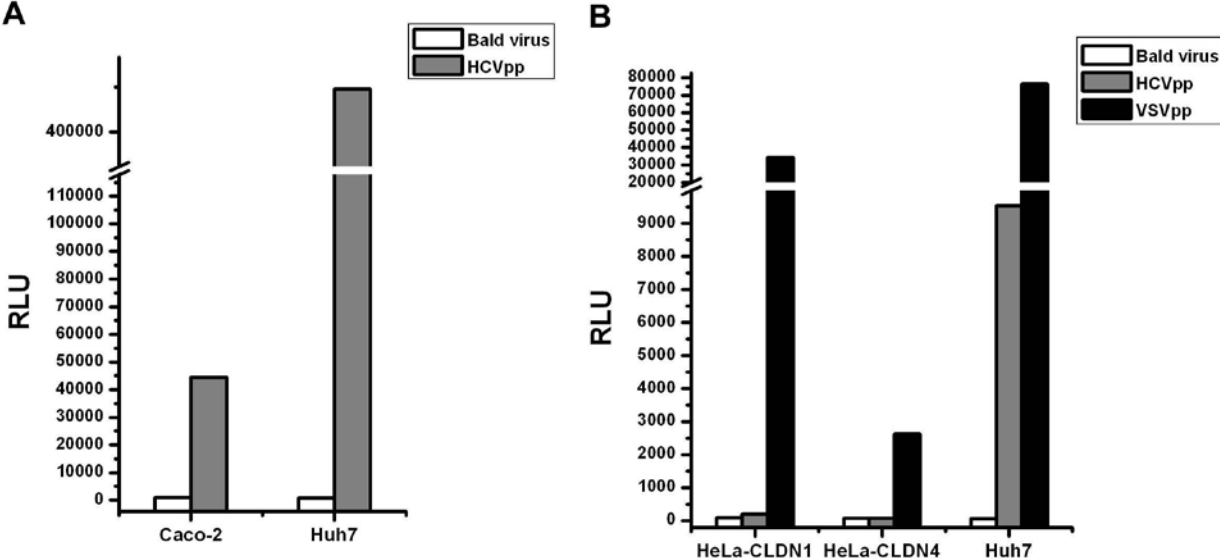
Supplementary Figure 1



Supplementary Figure 2



Supplementary Figure 3



Supplementary Figure 4

