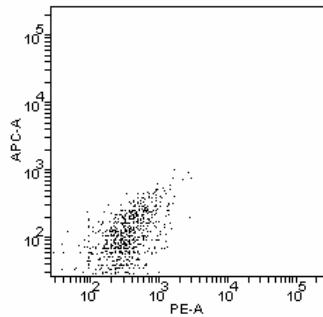
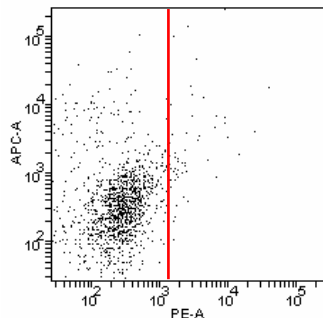


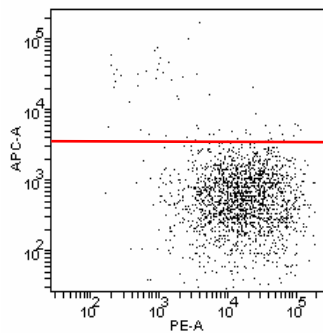
Compensation and gate setup



Control unstained



Control APC only



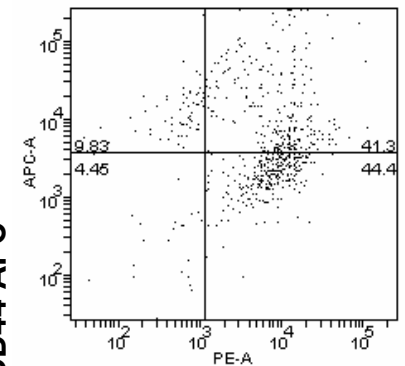
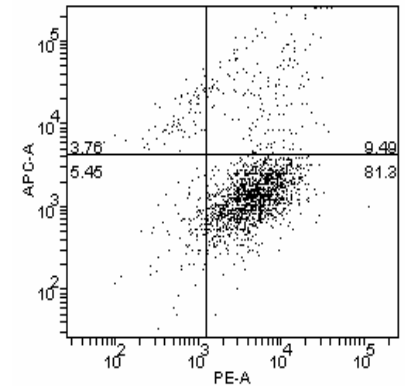
Control PE only

CD24-PE

ALDEFLUOR-negative

ALDEFLUOR-positive

Analysis



CD44-APC

CD24-PE

Supplementary methods 3. Analysis of the cell populations defined by the ALDEFLUOR and CD44CD24lin⁻ phenotypes in the UM2 tumor. The ALDEFLUOR-positive population in UM2 showed a considerably higher fluorescence compared to the other tumors (Supplementary Fig. 3). This required compensation and different gate setup for the analysis of the markers CD44CD24lin⁻, as shown in the flow chart on the left side of the figure .