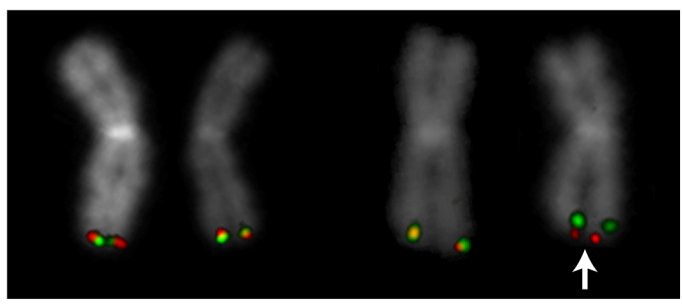
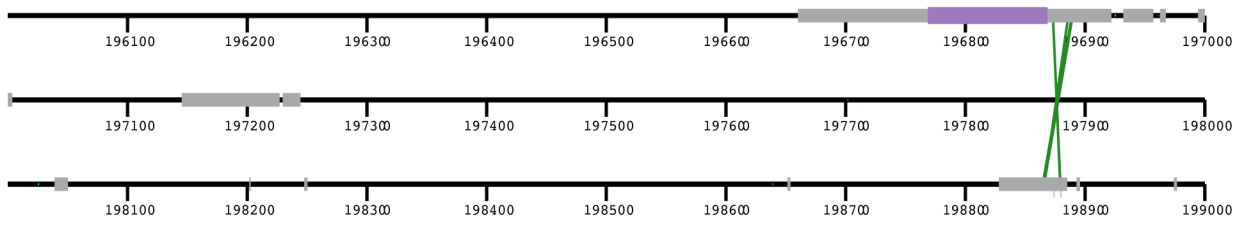


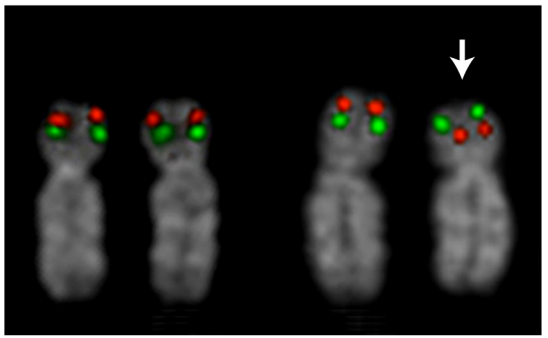
**Figure S6. Inversion Identification and Validation.** A schematic of clones used to identify 5 large inversions is shown (coloring as in Figure S3). Each of the depicted clones has an “inverted” orientation. Despite the presence of duplicated sequences (grey boxes), the clones have a single, best placement. For each locus, FISH validation is shown with the inverted allele indicated by the arrow. The 8q24 inversion was only observed in 3/20 nuclei and may be mosaic.

Figure S6

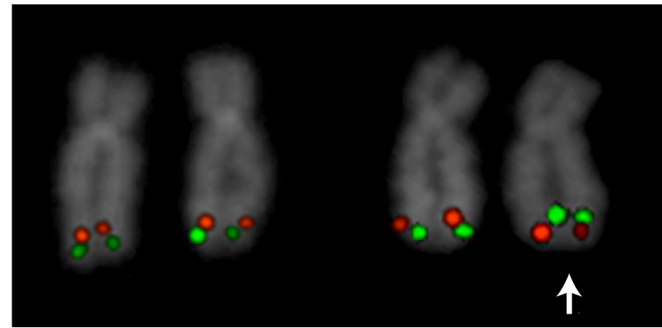
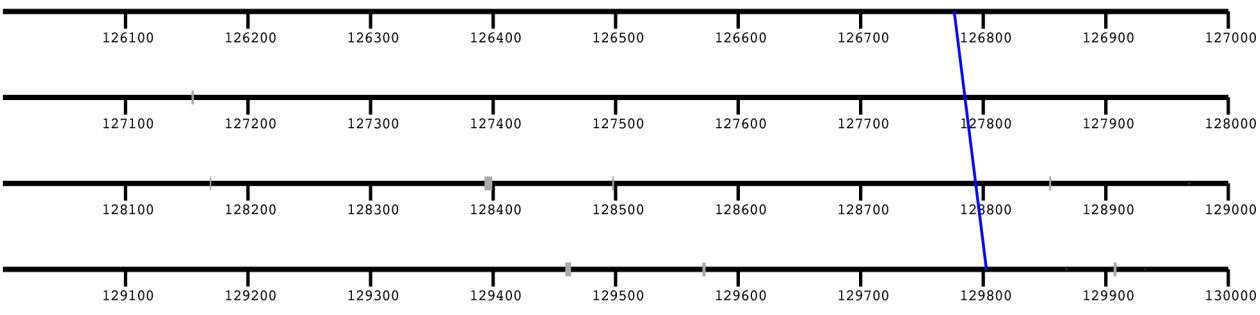
### 3q29



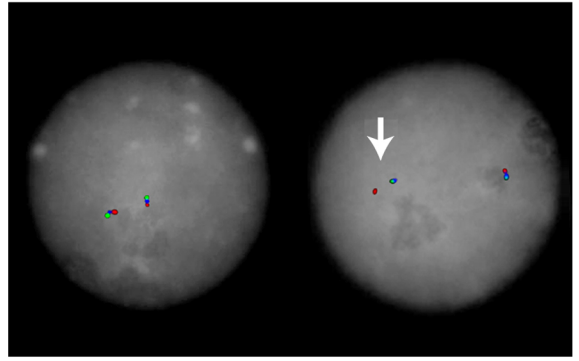
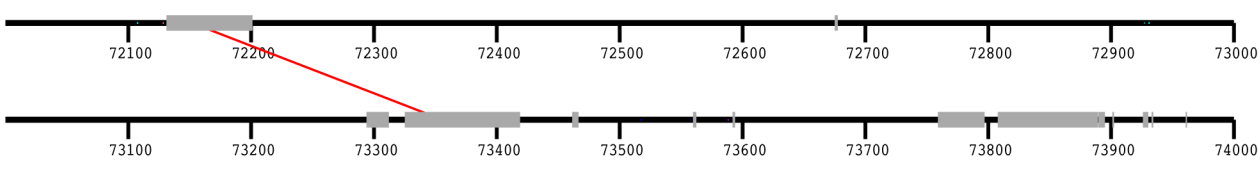
### 8p23



### 8q24



### 15q24



### 17q12

