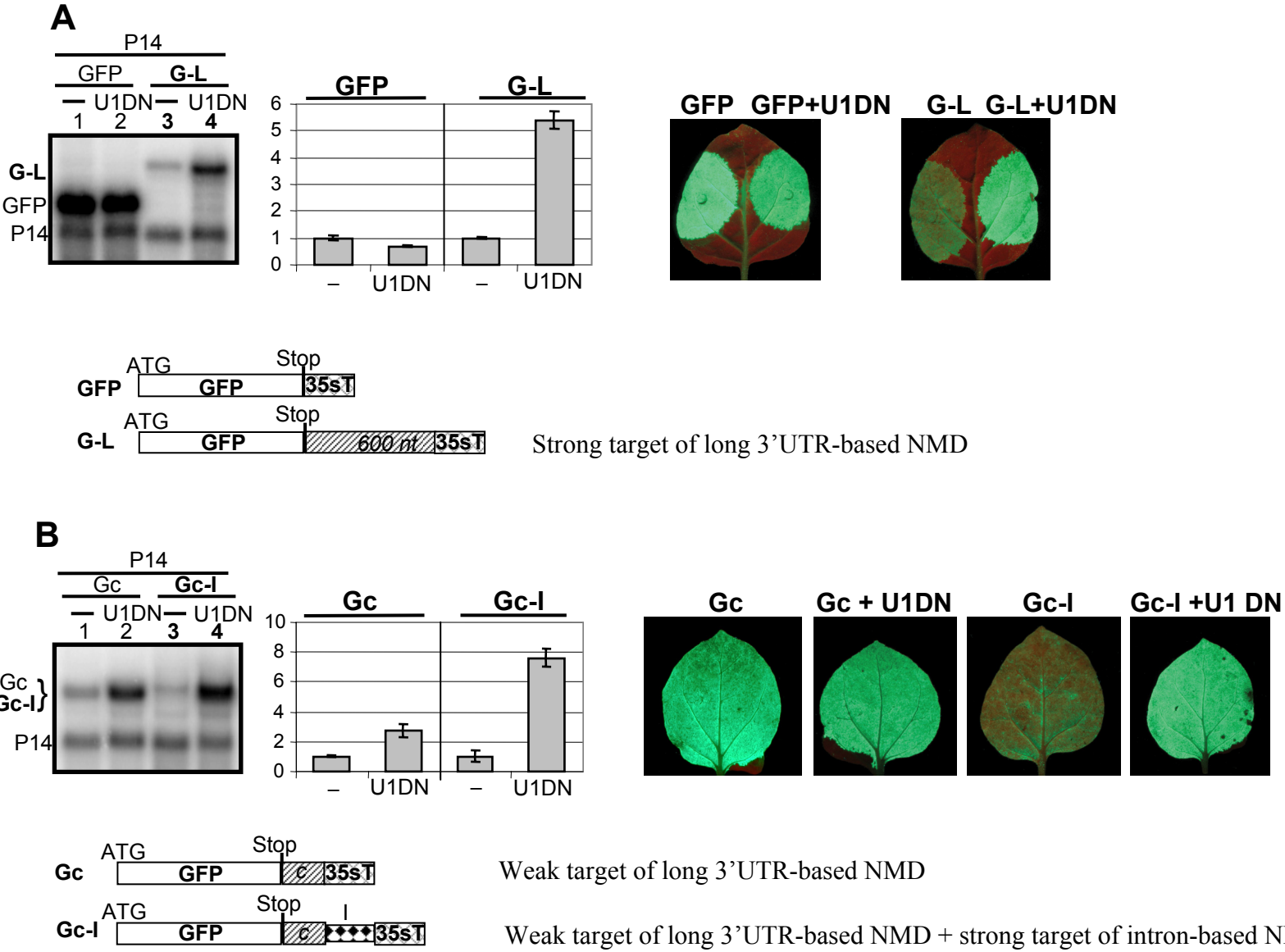
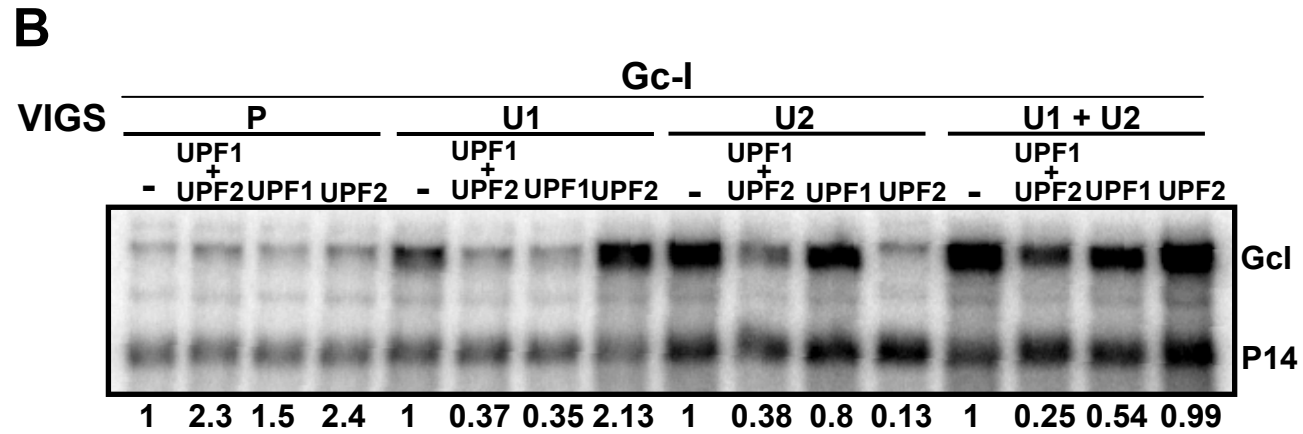
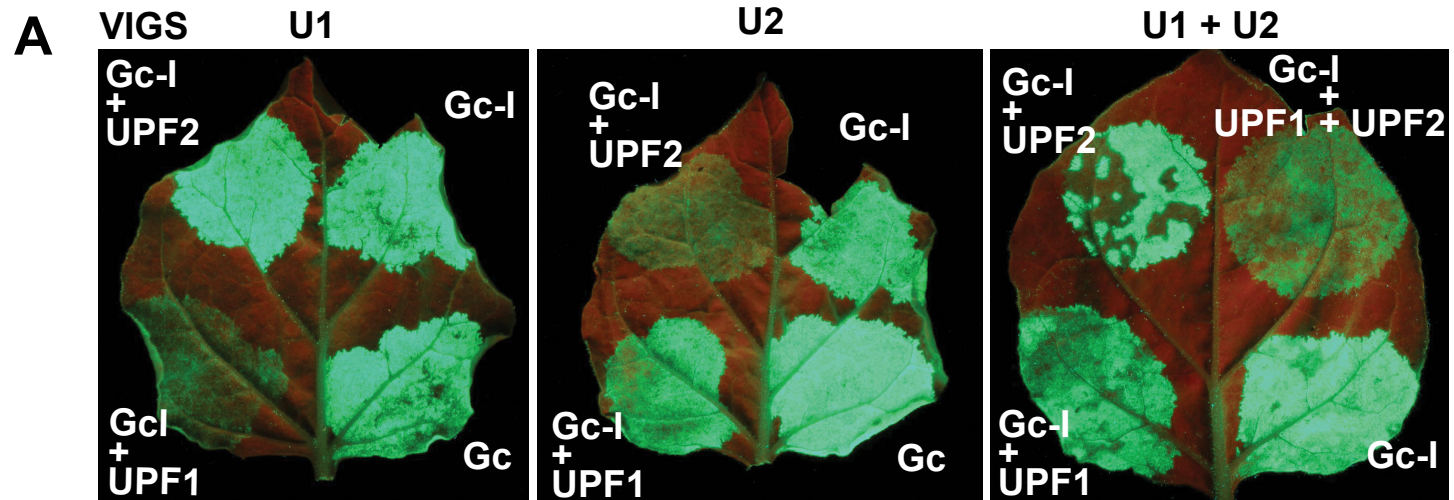


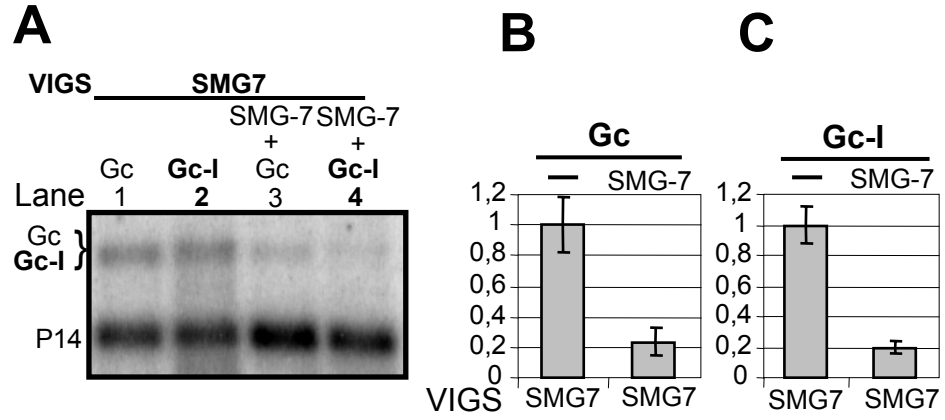
Supplementary Figure 1



Supplementary Figure 2



Supplementary Figure 3



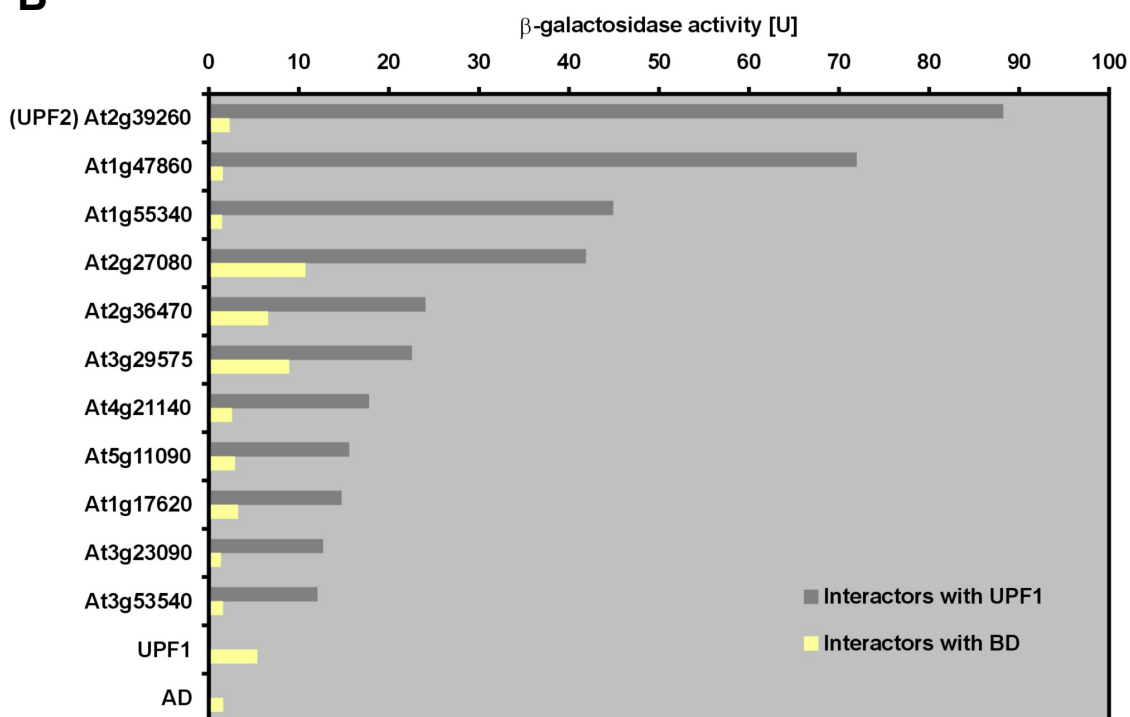
Supplementary Figure 4

A

| TAIR ID | Coded protein | ALW | | 100 mM 3-AT | | oNPG | | fragment/full (AA) |
|-----------|---------------------------------------|-------|----|-------------|----|-------|-------|--------------------|
| | | UPF 1 | BD | UPF 1 | BD | UPF 1 | BD | |
| At2g39260 | UPF2 | + | - | +++ | - | 88.23 | 2.29 | 439/1186 |
| At1g47860 | non-LTR retrotransposon family (LINE) | + | - | +++ | - | 71.96 | 1.52 | 1557/1560 |
| At1g55340 | expressed unknown protein | + | - | + | - | 44.90 | 1.45 | 205/205 |
| At2g27080 | harpin-induced protein-related | + | + | ++ | - | 41.86 | 10.72 | 135/260 |
| At2g36470 | expressed protein | + | - | - | - | 24.05 | 6.56 | 295/327 |
| At3g29575 | expressed protein | + | + | - | - | 22.54 | 8.90 | 231/231 |
| At4g21140 | expressed protein | + | - | - | - | 17.76 | 2.54 | 228/228 |
| At5g11090 | serine-rich protein-related | + | - | - | - | 15.58 | 2.88 | 176/217 |
| At1g17620 | expressed protein | + | - | - | - | 14.73 | 3.22 | 107/264 |
| At3g23090 | expressed unknown protein | + | - | - | - | 12.68 | 1.31 | 338/338 |
| At3g53540 | expressed protein | + | - | - | - | 12.05 | 1.55 | 862/924 |

B

UPF1 interactor candidates



Supplementary Figure 5

A

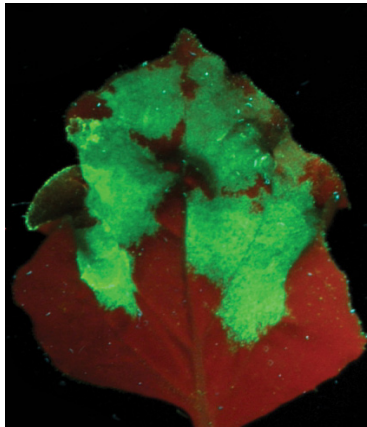
SMG7 mRNA levels in different silenced plants

| | |
|-----------------------------|-------------|
| P-silenced | 1 |
| SMG7-silenced | 0.24 |
| U1-silenced | 6.35 |
| U2-silenced | 8.05 |
| U3-silenced | 1.81 |
| Mago-silenced | 1.17 |
| Y14-silenced | 0.98 |
| P-silenced +U1DN | 2.2 |

B

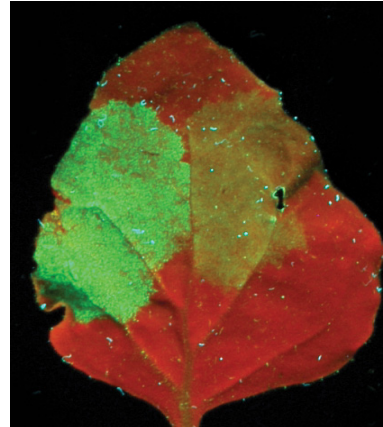
**GFP
+U1DN**

GFP



**G-smg7T
+U1DN**

G-smg7T



Supplementary Figure 7

