

S1

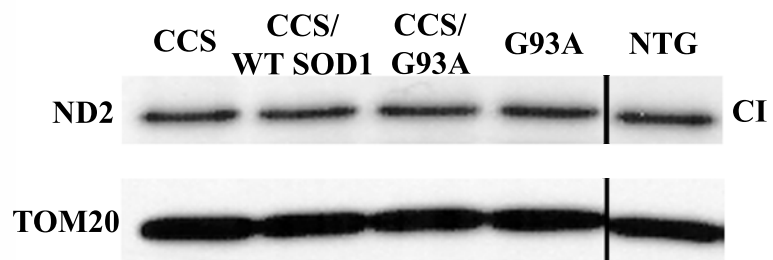


Fig. S1. Analysis of mitochondrial encoded complex I ND2 subunit levels in spinal cords from 3 week old mice. Mitochondrially enriched fractions from the spinal cords of 3-4 week NTG, CCS, G93A SOD1, CCS/WT SOD1 and CCS/G93A SOD1 mice separated on SDS-PAGE and probed with anti-ND2 (complex I) and anti-TOM 20 antibodies. 9µg of protein /lane were loaded. There is no observed difference across the different genotypes for levels of subunit ND2.