

# Supplemental figures

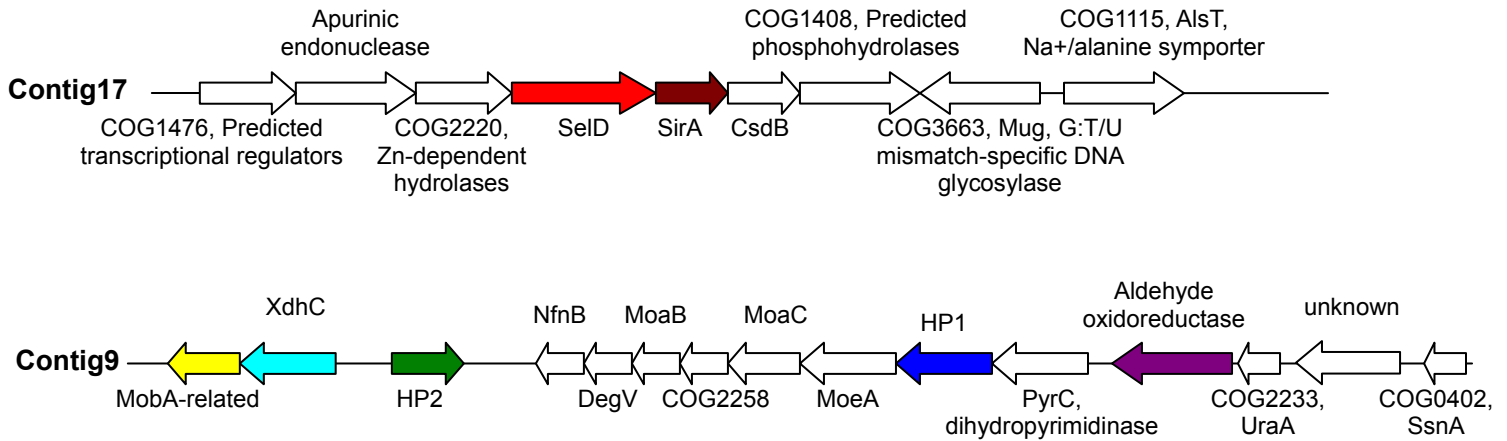
## Figure legends

### **Figure S1 - Genomic context of SeID in orphan SeID-containing genomes**

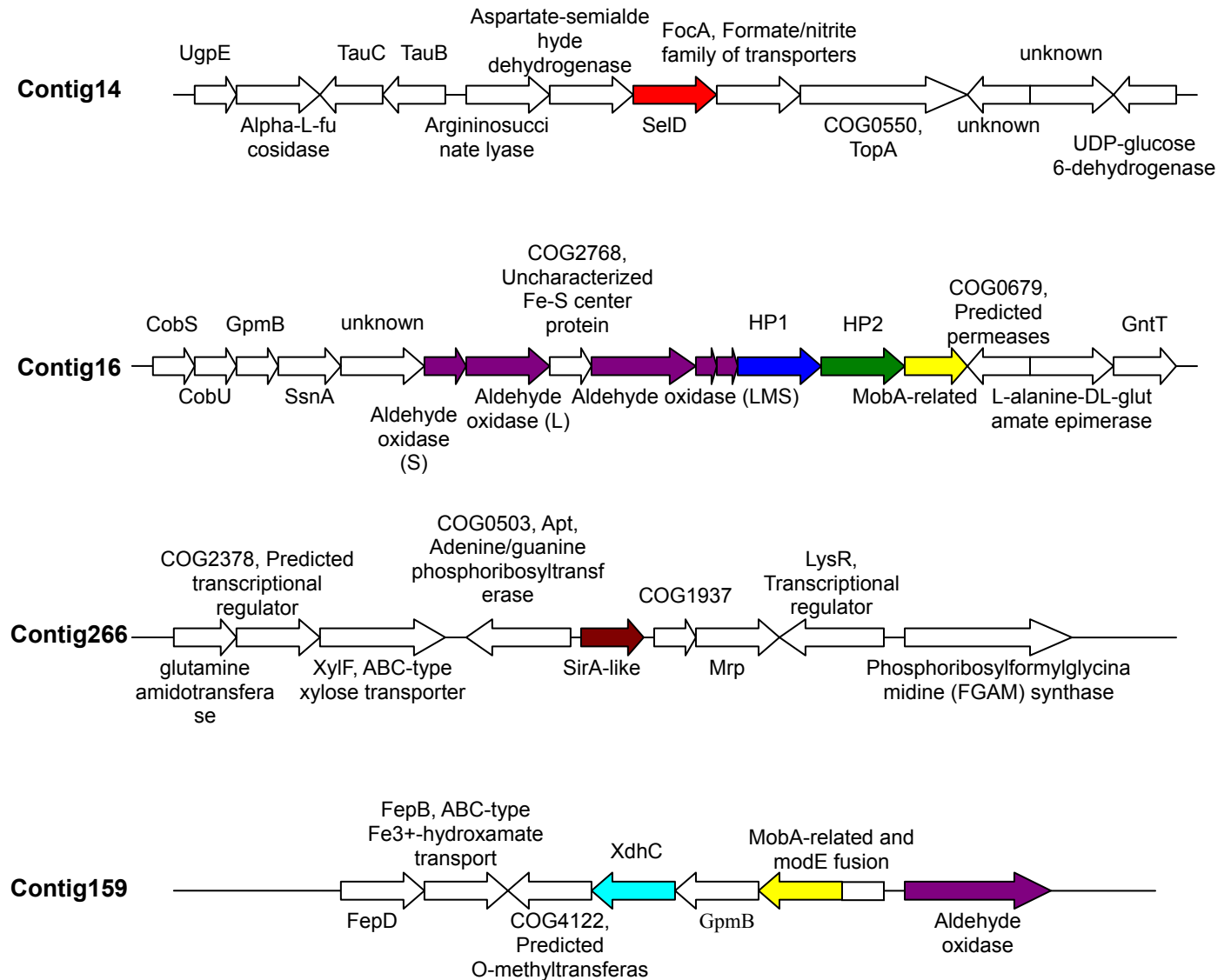
Candidate genes involved in the new selenium utilization trait are color coded. Coding direction is also indicated.

Figure S1

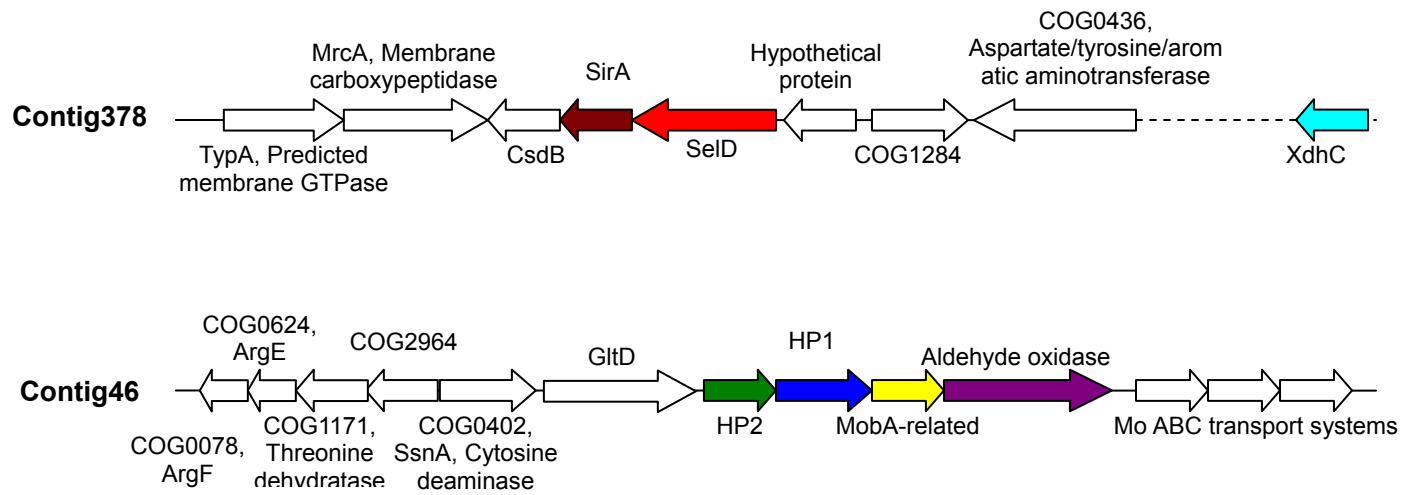
*Anaerostipes caccae*



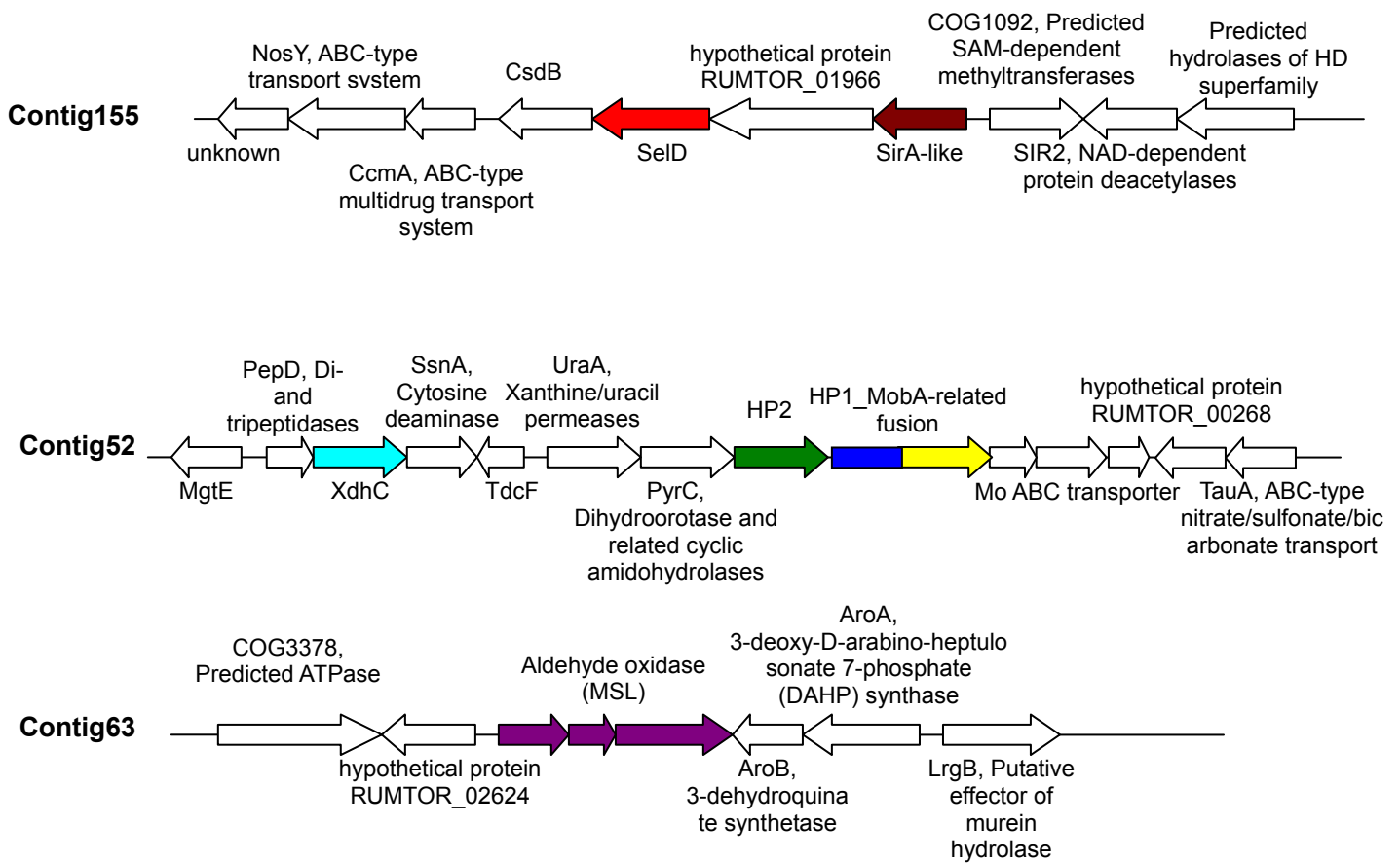
*Ruminococcus obeum*



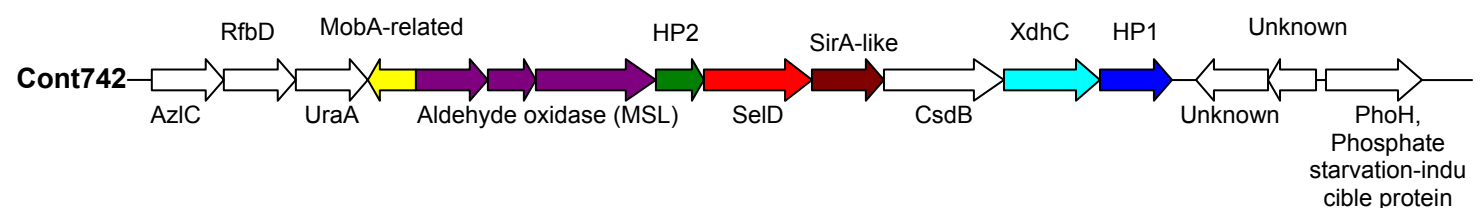
## *Ruminococcus gnavus*



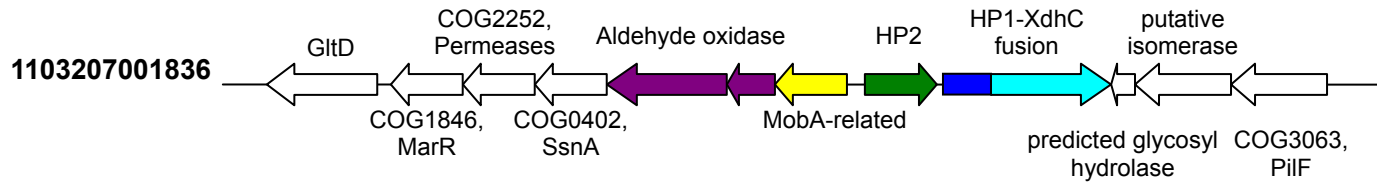
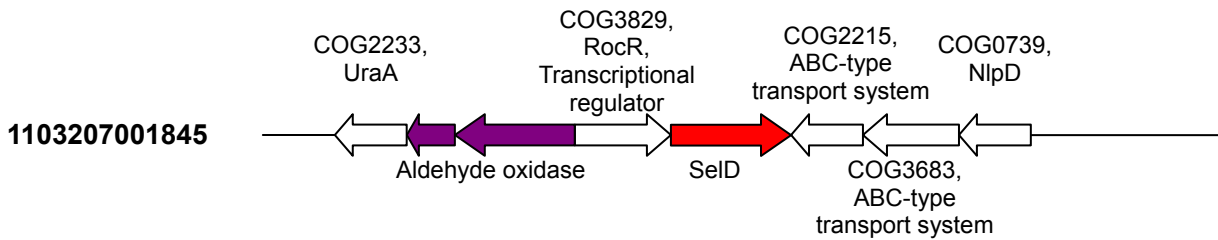
## *Ruminococcus torques*



## *Faecalibacterium prausnitzii*



***Vibrio shilonii***



***Clostridium butyricum***

