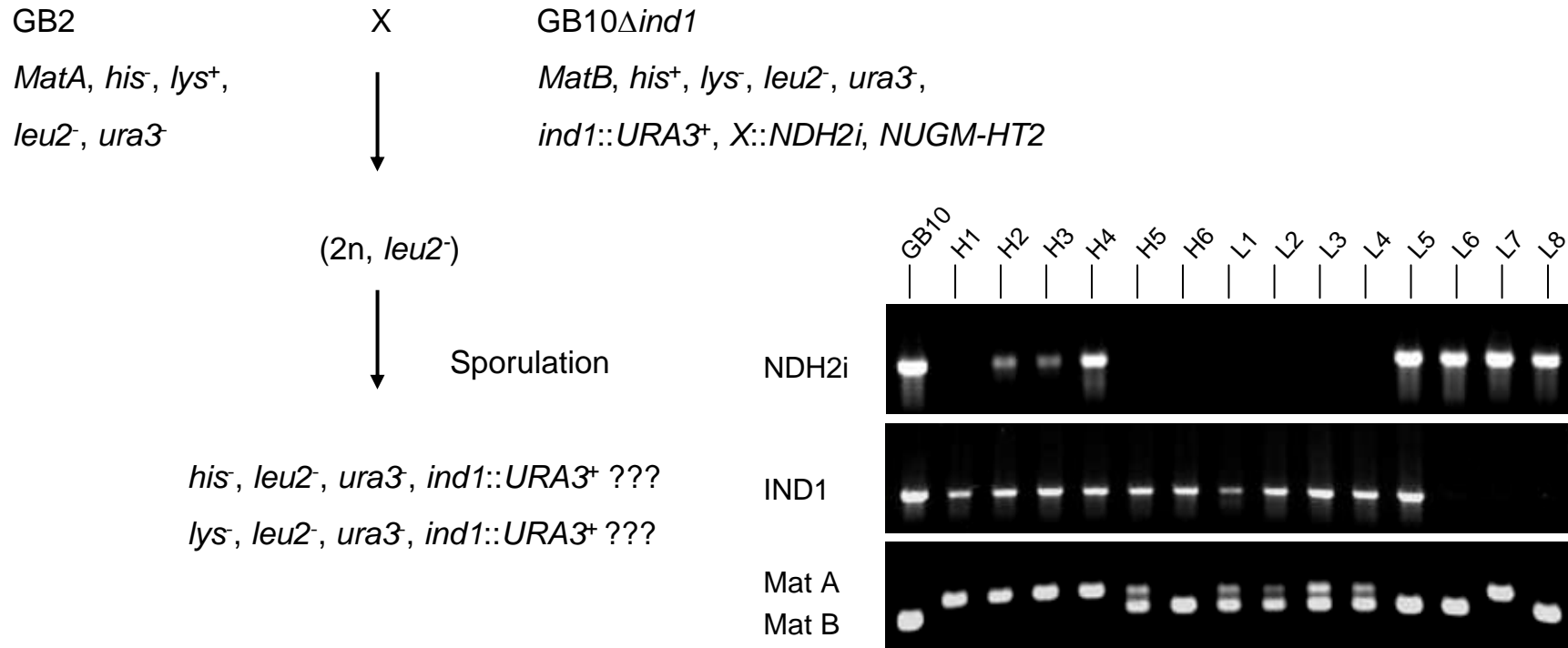


Supplementary Figure S5 - Backcross of GB10 (*NDH2i*, *ind1*Δ) x GB2



Following mass sporulation, about 150 small, uracil prototrophic colonies were analysed, yielding 6 histidine auxotrophic, DQA-sensitive and 6 lysine auxotrophic, DQA-sensitive strains. Using PCR with gene-specific primer pairs, we could show that they all have either *NDH2i*, or *IND1*, or both genes. Many appear to be aneuploid, indicated by the presence of both the *IND1* and the *ind1::URA3* alleles, and the presence of both mating type alleles.