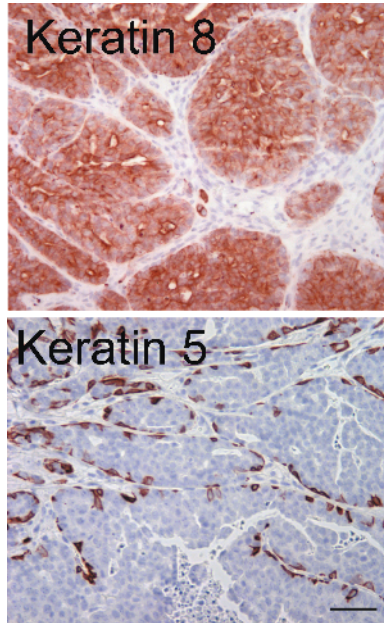


**Figure W1.** ALSV *env*-pseudotyped lentiviral constructs. Constructs used for generation of HIV(ALSV)-*GFP* (top) and HIV(ALSV)-*PyMT* (bottom). *CMV* indicates cytomegalovirus promoter; *FLAP*, HIV flap region; *GFP*, green fluorescent protein;  $\psi$ , packaging sequence; *PyMT*, HA-tagged polyoma middle T antigen; *RRE*, retroviral response element; *U3*, *R*, and *U5*, HIV long tandem repeat; *Ubi C*, ubiquitin C promoter. Lengths are not drawn to scale.



**Figure W2.** Keratin expression in HIV(ALSV)-*PyMT*-induced mammary tumors. Paraffin sections from HIV(ALSV)-*PyMT*-induced tumors were analyzed by immunohistochemistry for keratin 8 (top) and keratin 5 (bottom). Scale bar, 50  $\mu$ m.