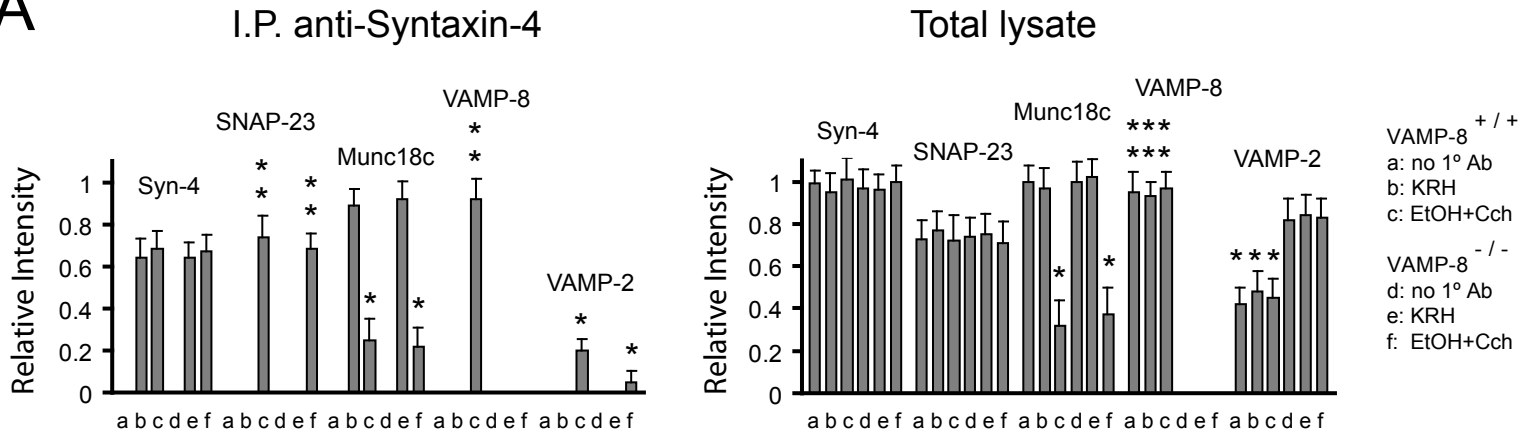
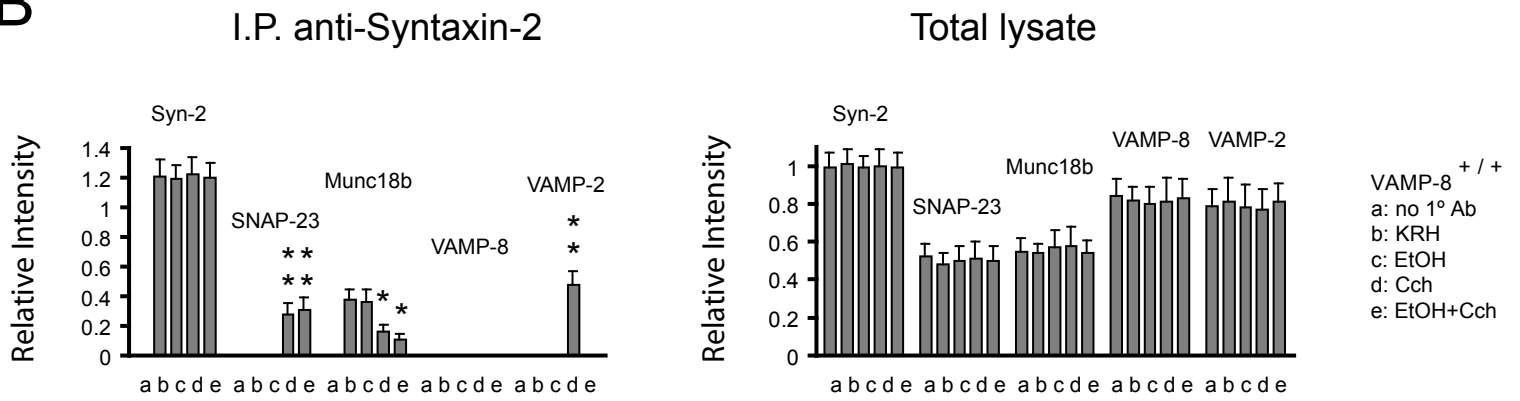


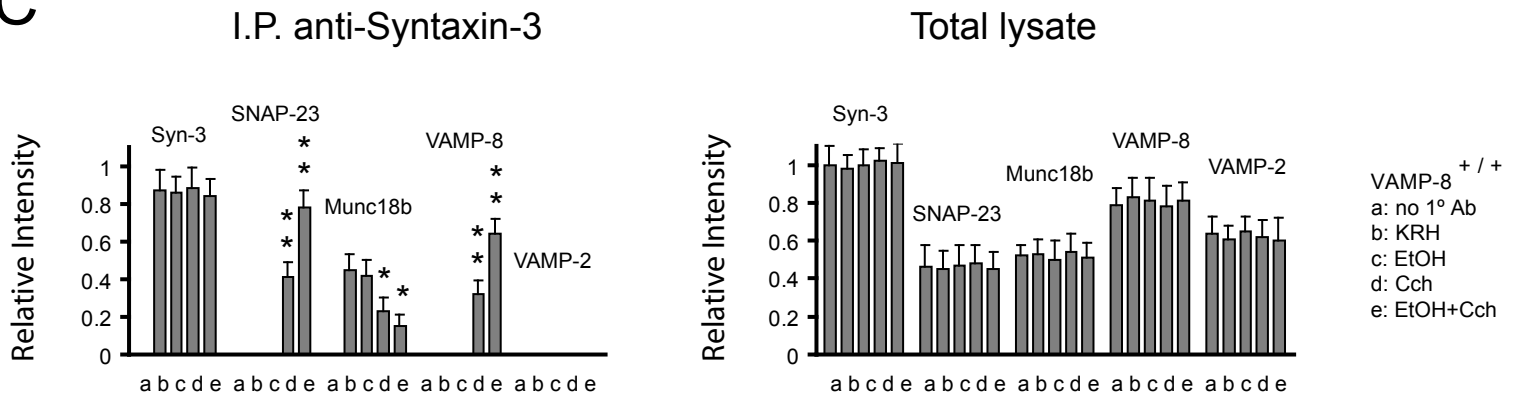
A



B



C



Supplemental Table 1. Pancreatic tissue parameters in supramaximal cerulein-induced pancreatitis

	Group	MPO UMPO/mg DNA	Active Trypsin nmoles/mg DNA	NF-kB (p65) ug/mg DNA	NF-kB (p50) ug/mg DNA	LPO nmol/mg DNA	MDA umol/mg DNA
VAMP-8 ^{+/+}	Control	0±0	0.16±0.07	below detection limit	below detection limit	below detection limit	0.79±0.10
	Cerulein	21.05±0.84	5.48±0.29	439±25	6.13±0.10	357±33	25.21±0.23
VAMP-8 ^{-/-}	Control	0±0	0.11±0.04	below detection limit	below detection limit	below detection limit	0.75±0.08
	Cerulein	7.32±0.94 *	4.17±0.16	176±18 *	2.85±0.14 *	130±16 *	16.03±0.15 *

* p<0.05

Supplemental Table 2. Serum parameters in supramaximal cerulein-induced pancreatitis

	Group	Amylase (IU/L)	Lipase (IU/L)	IL-6 (pg/mL)	TNF α (pg/mL)	MIP-1 α (pg/mL)
VAMP-8 ^{+/+}	Control	583 \pm 11	21 \pm 3	below detection limit	below detection limit	7 \pm 2
	Cerulein	5689 \pm 48	4115 \pm 29	1144 \pm 39	523 \pm 32	991 \pm 42
VAMP-8 ^{-/-}	Control	525 \pm 19	16 \pm 2	below detection limit	below detection limit	5 \pm 0.7
	Cerulein	2864 \pm 33 *	1806 \pm 28 *	699 \pm 12 *	273 \pm 39 *	611 \pm 21 *

* p<0.05

Supplemental Table 3. Histopathological score in supramaximal cerulein-induced pancreatitis

	Group	Edema	Hemorrhage	Infiltrate	Necrosis
VAMP-8 ^{+/+}	Control	0±0	0±0	0±0	0±0
	Cerulein	1.17±0.09	3.11±0.15	2.51±0.12	3.31±0.2
VAMP-8 ^{-/-}	Control	0±0	0±0	0±0	0±0
	Cerulein	0.97±0.05 *	1.54±0.16 *	1.17±0.09 *	1.32±0.14 *

* p<0.05

Supplemental Table 4. Lung tissue parameters and histopathological score in supramaximal cerulein-induced pancreatitis

	Group	Edema	Hemorrhage	Leukocyte Infiltrate	MPO UMPO/mg DNA	NF-kB (p65) ug/mg DNA	NF-kB (p55) ug/mg DNA
VAMP-8 ^{+/+}	Control	0±0	0±0	0±0	0±0	below detection limit	below detection limit
	Cerulein	2.2±0.3	3.7±0.6	2.1±0.8	13.0±0.4	315±46	3.3±0.50
VAMP-8 ^{-/-}	Control	0±0	0±0	0±0	0±0	below detection limit	below detection limit
	Cerulein	0.8±0.1 *	1.6±0.5 *	1.1±0.3 *	5.6±1.0 *	108±12 *	1.5±0.14 *

* p<0.05

Supplementary Data

Supplemental Figure 1: Summary of the NIH-Image densitometry analysis of the data from **Figure 3A** showing VAMP-8, VAMP-2 and actin levels in pancreatic acini of VAMP-8^{+/+} and VAMP-8^{-/-} mice. The data was from three independent experiments, with samples performed in duplicates. *: $p < 0.05$.

Supplemental Figure 2: Morphometric analysis of EM of pancreatic tissues of CD- and ED-fed VAMP-8^{+/+} and VAMP-8^{-/-} mice: ZG abundance, distribution, fusion events, and apical lumen area. The data shown is the analysis of the EM images shown in **Figs. 6 and 7**.

A) Number of ZGs per EM cell section. **B)** Distribution of ZGs within the acinar cell section. X axis indicates the distance from the apical lumen. **C)** Number of ZGs per cell section docked on the lateral PM (LPM). **D)** Distribution of ZGs per cell section docked on the LPM. X axis indicates the distance from the junctional complex. **E)** Number of ZG-ZG fusions per EM cell section. **F)** Apical lumen areas. For each strain and treatment, 300 cells from 3 independent experiments were quantified. Data are expressed as means \pm SD; statistical significance was examined by Mann-Whitney U-test (non-parametric) for ZGs analysis and Student *t* test for apical lumen areas. *: $p < 0.05$ and **: $p < 0.01$ compared to CD/Saline.

Supplemental Figure 3: Summary of the NIH-Image densitometry analysis of the data from **Figure 9**, which are immunoprecipitated Syntaxin-4 (in **A**) and Syntaxin-2 (in **B**) from PM fractions, and immunoprecipitated Syntaxin-3 from ZG membrane fractions (in **C**) prepared from pancreatic acini stimulated by the indicated treatment conditions. VAMP-8^{+/+} and VAMP-8^{-/-}

mice acini were used in **A**, whereas only VAMP-8^{+/+} mice acini were used in **B** and **C**. The data came from blots of three independent experiments, with samples performed in duplicates. Data is expressed as means \pm SD; *: $p < 0.05$ compared to KRH.

Supplemental Table 1: Pancreatic tissue parameters in supramaximal cerulein-induced pancreatitis.

*: $p < 0.05$ compared to VAMP-8^{+/+} mice.

Supplemental Table 2: Serum parameters in supramaximal cerulein-induced pancreatitis.

*: $p < 0.05$ compared to VAMP-8^{+/+} mice.

Supplemental Table 3: Histopathological score in supramaximal cerulein-induced pancreatitis.

*: $p < 0.05$ compared to VAMP-8^{+/+} mice.

Supplemental Table 4: Lung tissue parameters and histopathological score in supramaximal cerulein-induced pancreatitis.

*: $p < 0.05$ compared to VAMP-8^{+/+} mice.