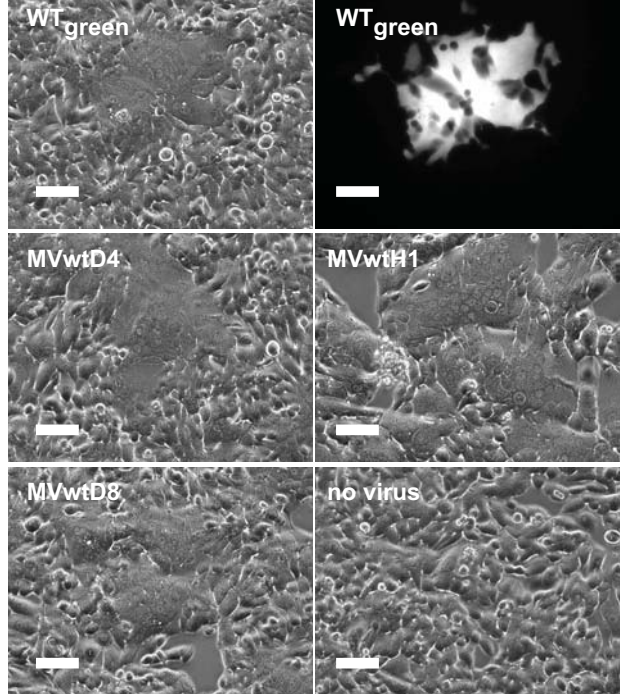


Legends to Supplementary Figures

Supplementary Figure 1: Permissivity of H358 cells to infection with wild type MV isolates. The wild-type MVs, wtD4 and wtD8 (kindly provided by P. Rota, Centers for Disease Control and Prevention, Atlanta, GA), were isolated and propagated on Vero/hSLAM cells for 3 passages prior to use. wtH1 (provided by P. Rota) was isolated on B95a cells prior to propagation on Vero/hSLAM cells. WT_{green} infection analysis is shown on the top row in phase contrast (left panel) or fluorescence emission (right panel). Infections with MVwtD4, MVwtH1 and MVwtD8 are shown in the middle and bottom rows. Pictures were taken 48 hours post-infection. Scale bars: 100 μ m.



Leonard et al.
Supplementary Figure 1