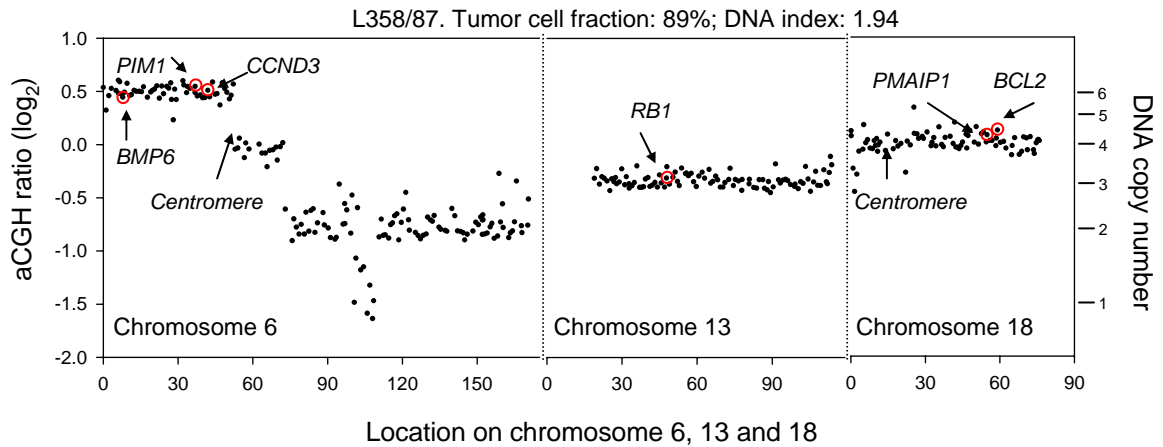


Additional data file 2



Example of FISH probe locations.

ACGH ratios are plotted against chromosomal location on chromosomes 6, 13, and 18 in a tetraploid lymphoma with a tumor cell fraction of 89%. FISH probes for *BMP6*, *PIM1*, *CCND3*, centromere 6, *RB1*, *PMAIP1*, *BCL2*, and centromere 18 were used in this particular tumor, and their location is marked. The copy numbers determined with FISH were 3 (*RB1*), 4 (*PMAIP1*, *BCL2*), and 6 (*BMP6*, *PIM1*, *CCND3*).