

Supplemental Data

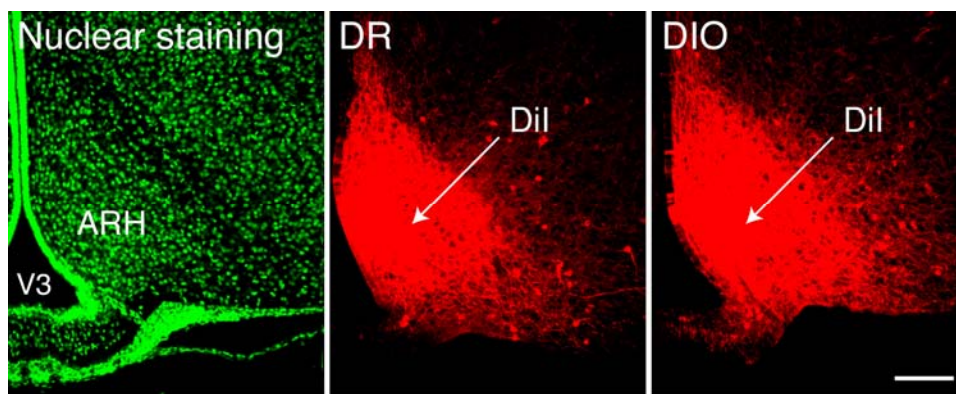
Short Article

Hypothalamic Neural Projections

Are Permanently Disrupted

in Diet-Induced Obese Rats

Sebastien G. Bouret, Judith N. Gorski, Christa M. Patterson, Stephen Chen,  
Barry E. Levin, and Richard B. Simerly



**Figure S1. Arcuate Nucleus of the Hypothalamus (ARH) of P12 DR and DIO Offspring**

Confocal images of a green nucleic acid-stained section showing a representative DiI implant in the ARH of P12 DR and DIO rats. V3, third ventricle. Scale bar = 200  $\mu$ m.