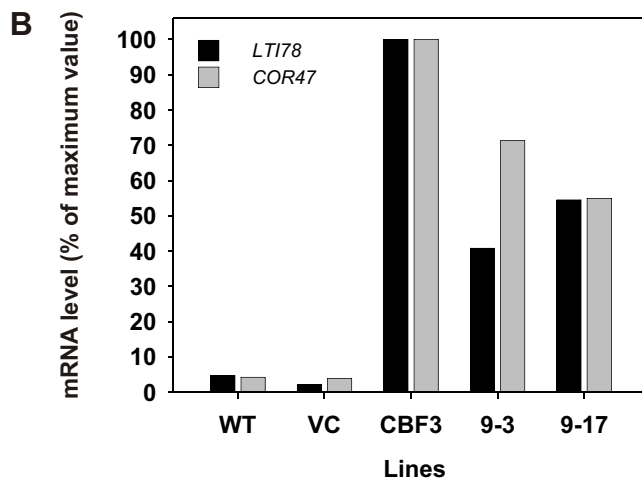
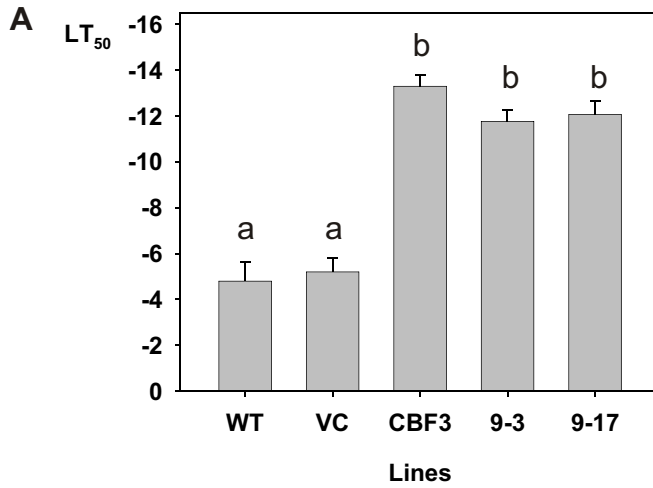


**Supplemental Figure S4.**



**Supplemental Figure S4.** Functional analysis of transgenic Arabidopsis plants overexpressing birch *BpCBF1* gene.

(A) Freezing tolerance was measured by an electrolyte leakage assay from non-acclimated soil grown wild-type (WT) plants, vector control plants (VC) carrying empty pCP60 vector, *AtCBF3* overexpressing plants (CBF3) and transgenic lines overexpressing birch *BpCBF1* gene (9-3) and (9-17). The values represent the average of three replicate experiments  $\pm$ SE. Different letters indicate significant difference at 0.05 confidence level calculated with Kruskal-Wallis test followed by critical difference post hoc analysis.  $\chi^2 = 11.05$ ,  $df = 4$ ,  $n = 3$ . (B) Transcript levels of CBF target genes *LT178* and *COR47* in WT and transgenic VC, CBF3, 9-3 and 9-17 plants grown at 22 °C. A <sup>32</sup>P labeled cDNA probes were used in RNA gel blot hybridizations. Histogram shows normalized values of *LT178* and *COR47* after standardization to ribosomal signal intensities presented as a percentage of the highest value.