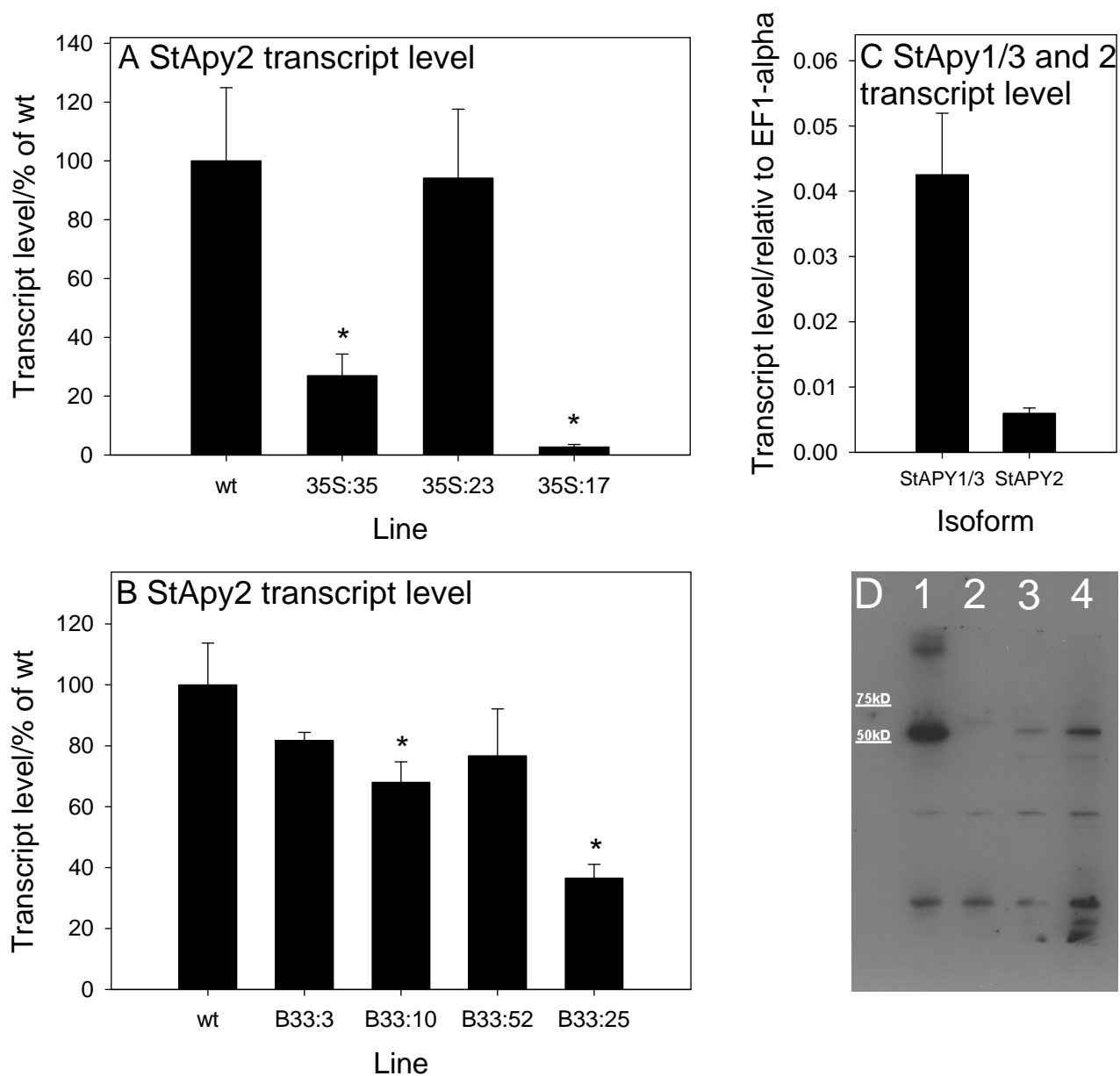


Supplemental Fig. S3



Supplemental Fig. S3. Potato apyrase transcript and protein abundance. StAPY2 transcript levels in tubers from the **(A)** 35S-RNAi lines and **(B)** B33-RNAi lines. **(C)** Comparison of the relative transcript abundance of StAPY1/3 and StAPY2 in wild type tubers. **(D)** Five μ g protein was analyzed using a serum raised against apyrase. (1) 35S:17 + 50 mU commercially available apyrase (SIGMA), (2) 35S:17 without additional apyrase, (3) wt, (4) 35S:113. The band appearing at appr. 52kD corresponds to potato apyrase.