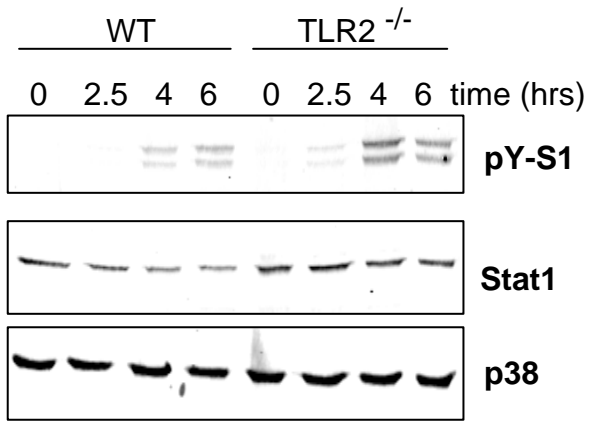
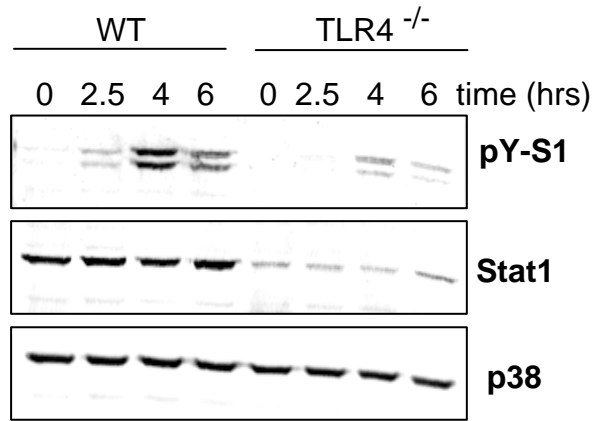


Supplementary Fig. S1. GAS-mediated activation of Stat1 does not require TLR2, TLR4 or TLR9. *A, B & C.* BMDMs from TLR2^{-/-} (A), TLR4^{-/-} (B), TLR9^{-/-} (C) and wild-type (WT) control mice were exposed to GAS at MOI of 100 for the indicated time periods and whole cell extracts were prepared. Stat1 phosphorylation was determined by Western blotting using antibody to Tyr701-phosphorylated Stat1 (pY-S1). Stat1 expression levels were determined by reprobng the membrane with antibody to total Stat1. Differences in Stat1 levels between wild-type and TLR2^{-/-} or TLR4^{-/-} BMDMs were revealed by reprobng the membrane with antibody to p38MAPK.

A



B



C

