

1 Electronic appendix

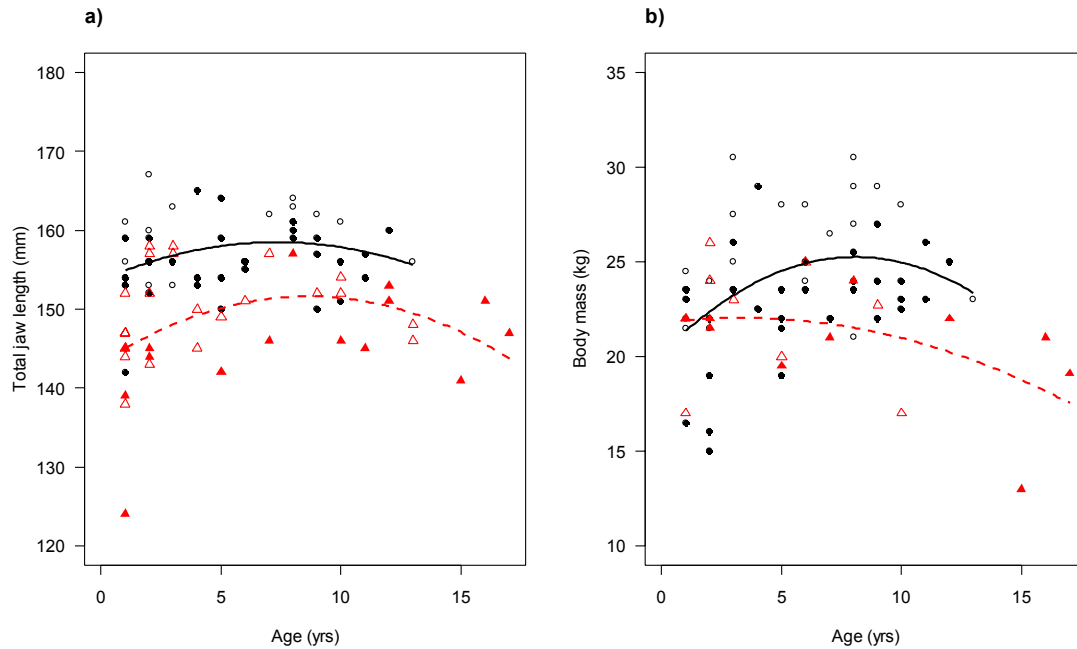
2 Appendix Table 1. A detailed description of the study areas in Chizé and Trois Fontaines,
3 France.

Parameter	Chizé	<i>Trois Fontaines</i>
Size	2614 ha	1360 ha
Climate in general	Temperate oceanic with mediterranean influence	Continental
Winter climate	Mild winters (mean daily temperature of 5°C in January and only 44 days per year below 0°C)	Moderately severe winters (mean daily temperature of 2°C in January)
Summer climate	Hot and dry (mean daily temperature in July is 20.4°C, total rainfall in May–June is 88 mm and total rainfall in July–August is 98 mm)	Hot but not dry (mean daily temperature in July is 19°C, total rainfall in May-June is 150 mm and total rainfall in July-August is 130 mm)
Soils	Shallow, calcareous, and not very fertile	Fertile
Habitat structure	1/3 of the area of poor quality. The remaining 2/3 is of intermediate habitat quality	Homogeneous at the large scale. High quality
Forest productivity (wood produced)	3.77 m ³ /ha/year	5.92 m ³ /ha/year
Dominating tree species	Beech (<i>Fagus sylvatica</i>) and oak (<i>Quercus</i> sp.)	Beech and oak
Dominating coppice species	Poor area: often no coppice. Intermediate area: Montpellier maple (<i>Acer monspessulanum</i>)	Hornbeam (<i>Carpinus betulus</i>)
Dominating understory species	Poor area: Wood false brome (<i>Brachypodium</i> sp.), butcher's broom (<i>Ruscus aculeatus</i>), ivy (<i>Hedera helix</i>), wild madder (<i>Rubia peregrina</i>) and wood melick (<i>Melica uniflora</i>) Intermediate area: Ivy and brambles	Ivy and brambles (<i>Rubus</i> sp.)

4 Appendix Table 2. The sample size for roe deer (n=93) data separated by age and sex for
 5 each of the two populations.

Age	Chizé		Trois Fontaines	
	Males	Females	Males	Females
1	6	3	4	4
2	4	2	4	4
3	3	-	4	2
4	2	-	-	3
5	1	1	1	4
6	1	-	2	2
7	1	1	1	1
8	-	1	4	3
9	1	-	1	3
10	2	1	1	3
11	-	1	-	2
12	-	2	-	1
13	2	-	1	-
14	-	-	-	-
15	-	1	-	-
16	-	1	-	-
17	-	1	-	-
Total	23	15	23	32

6



8

9

10 Appendix Figure 1. Total jaw length, a), and body mass, b), for animals of varying age
 11 from Chizé (females: filled red triangles; males: open red triangles) and Trois Fontaines
 12 (females: black dots; males: open black circles). Predicted values for each population,
 13 males and females being merged, are indicated by lines (Chizé: dashed; Trois Fontaines:
 14 solid).

15

16

17