

Figure S1.

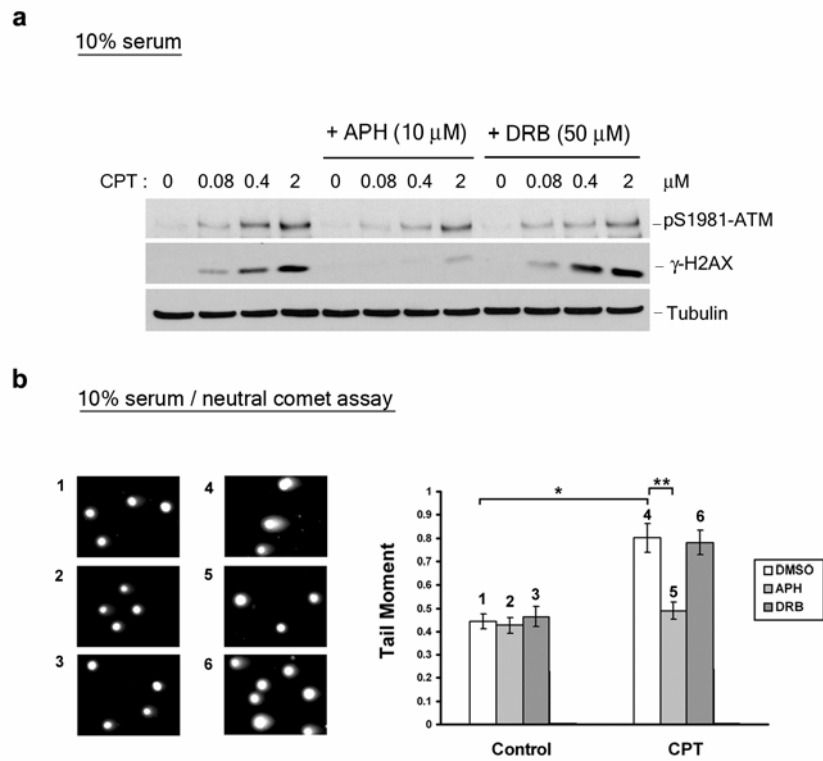


Figure S1. CPT-induced γ -H2AX and DNA double-strand breaks are replication-dependent. (a) Proliferating WI-38 cells (cultured in 10% serum) were treated with CPT in the presence and absence of APH (10 μ M) or DRB (50 μ M). Cell lysates were immunoblotted with various antibodies as indicated. (b) Proliferating WI-38 cells (cultured in 10% serum) were treated with CPT (25 μ M) for 1 hr in the presence and absence of APH (10 μ M) or DRB (50 μ M). Neutral comet assay was performed as described in Experimental Procedures. The tail moment was determined and plotted against each treatment condition.