

Figure S2.

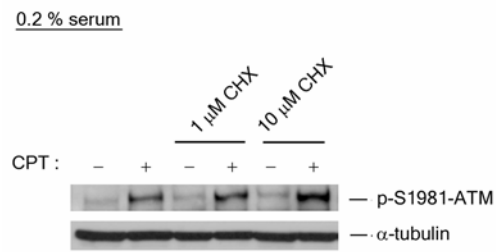


Figure S2. CPT-induced ATM autophosphorylation is independent of protein synthesis. Quiescent WI-38 cells were pre-treated with cycloheximide (CHX) for 30 min, followed by co-treatment with 25 μ M CPT for one hr. Cell lysates were immunoblotted with anti-pS1981-ATM and anti-tubulin antibodies.