

- Supplemental material -

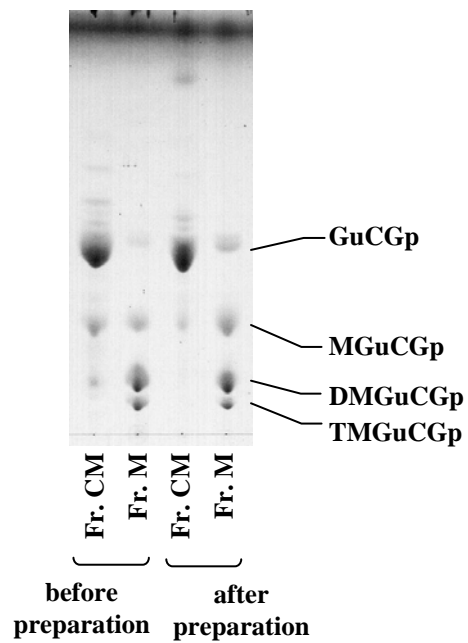


Fig. S1.

Shimada *et al.*

## Figure legend for supplemental material

Fig. S1. Lipid compositions of Fr.CM and Fr. M. The left two lanes show the lipids before the preparation of liposome and the right two lanes show the lipids after the preparation of liposome. About 10  $\mu\text{g}$  of each sample was spotted on the HPTLC plate. HPTLC was carried out on silica gel F254 plates of 10 by 10 cm and 0.1-mm thickness and was developed with chloroform-methanol-water (65:26:4, vol/vol/vol).