

Udagawa et al. Fig S2

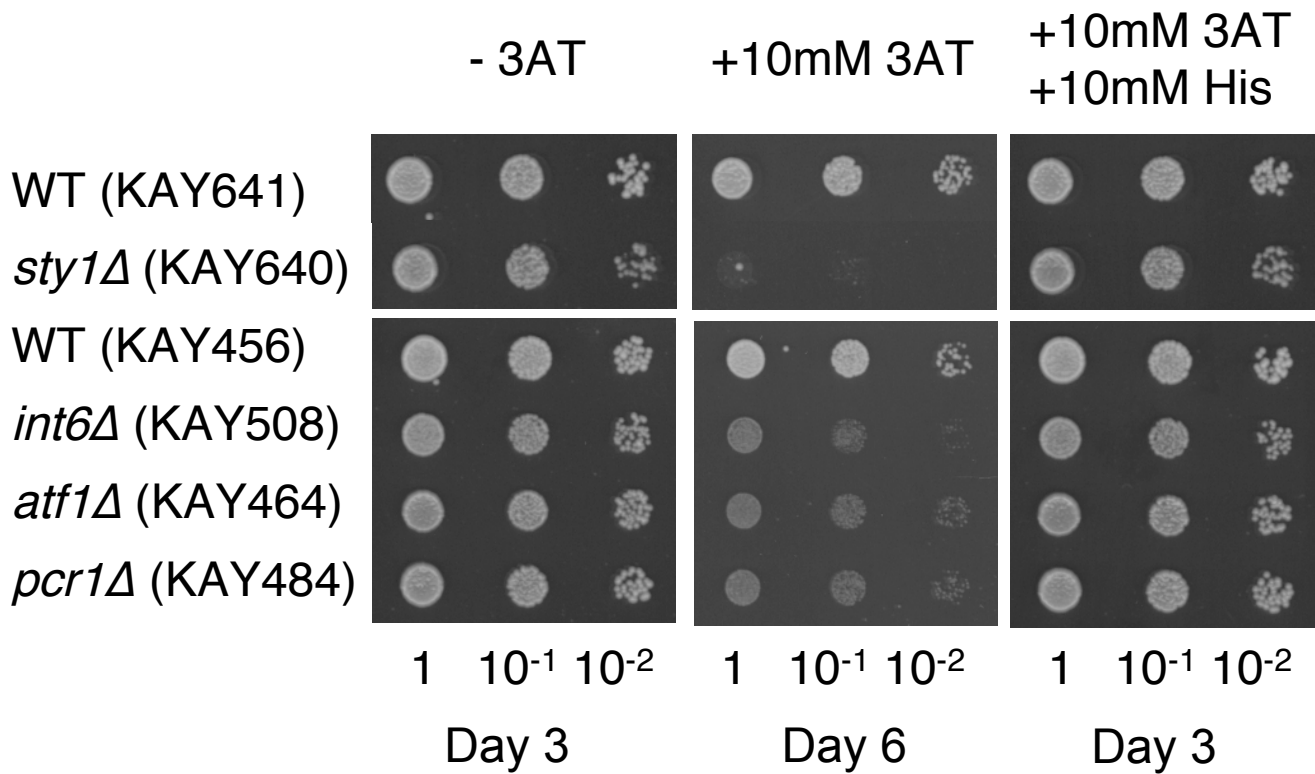


Fig. S2. Histidine reverses 3AT sensitivity of Sty1 signaling mutants. Cultures of strains indicated to the left (Table 1) and its serial dilutions, as indicated on the bottom of the pictures, were spotted on solid EMM-C medium with supplements indicated across the top. Plates were incubated for the time indicated to the bottom and then the pictures were taken for each plate.