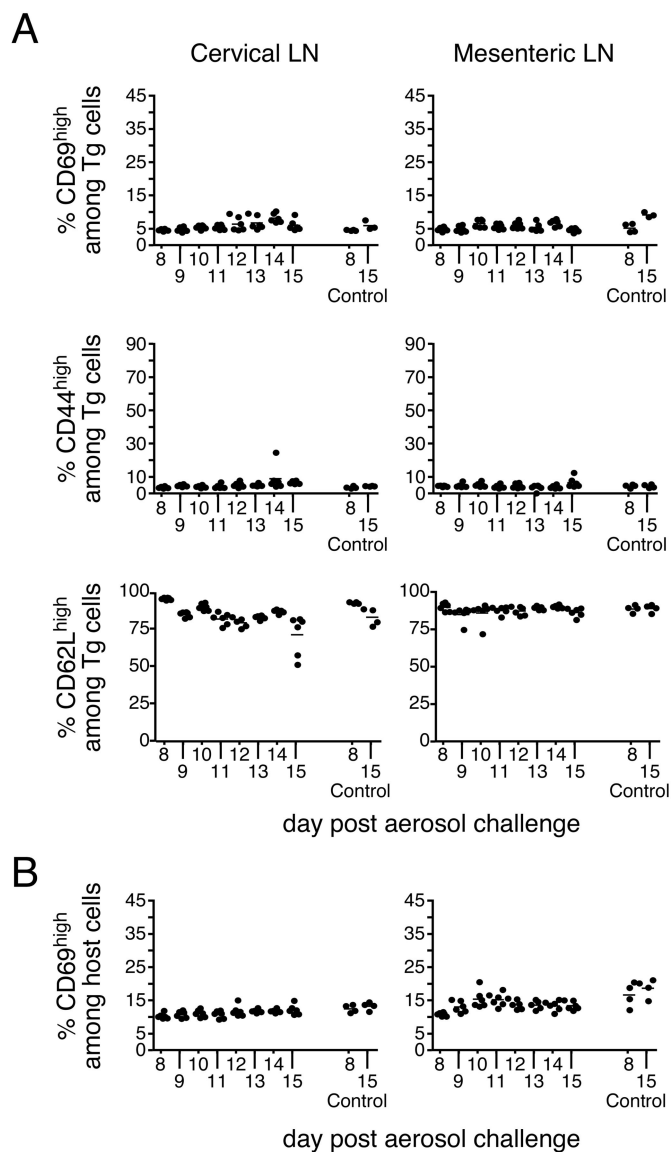
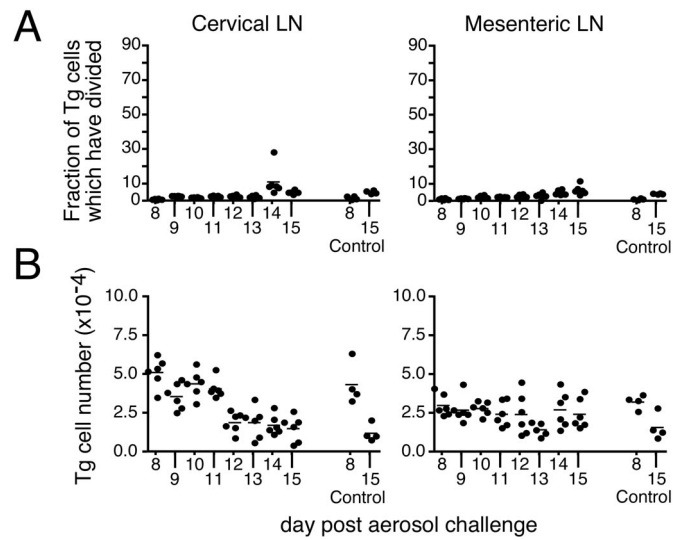


# Supporting Information

Reiley *et al.* 10.1073/pnas.0801496105



**Fig. S1.** Kinetics of ESAT-6/I-A<sup>b</sup>-specific T cell activation. Naïve ESAT-6 transgenic cells ( $2 \times 10^6$ ) were injected i.v. into Thy1.1-congenic hosts that had been aerosol-infected 6 days earlier with 75 CFU of Mtb (H37Rv). (A) Expression of CD69, CD44, and CD62L on donor ESAT-6 transgenic T cells in the cervical and mesenteric LN. (B) Expression of CD69 on endogenous (host) CD4 T cells within the same animals analyzed in A. Data points are representative of individual mice. The data are representative of three independent experiments of similar design.



**Fig. S2.** Proliferation and number of ESAT-6<sub>1-20</sub>/I-A<sup>b</sup>-specific transgenic T cells after Mtb infection. CFSE-labeled or unlabeled naïve ESAT-6 transgenic cells ( $2 \times 10^6$ ) were i.v. administered to Thy1.1-congenic recipients that had been aerosol infected 6 days earlier with  $75 \pm 25$  CFU of H37Rv. (A) The fraction of transgenic T cells that had undergone cell division were determined. Data are presented from the cervical and mesenteric LN. Four noninfected control mice were included on days 8 and 15 after infection (Control 8 and 15, respectively). (B) The number of transgenic cells shown in A are indicated. The data are representative of two independent experiments of similar design.

**Table S1. TCR V $\alpha$  screening oligonucleotides**

Va1	5'-CTG TTC CAG CTG GAT GGG GTG AGG AGC CAG (GC)AG AA(TG) GT(AG) CAG-3'
Va2	5'-CTG TTC CAG CTG GAT GGG AAA CGT GAC CAG CAG CAG GTG AGA-3'
Va3	5'-CTG TTC CAG CTG GAT GGG GAT GCC CAA GCT CAG TCA GTG ACA-3'
Va4	5'-CTG TTC CAG CTG GAT GGG AGG ACC CAT GGA (GA)AT TC(AC) GTG AC(CT) CA-3'
Va5	5'-CTG TTC CAG CTG GAT GGG GTG AGC AGA GGC GAG CAG GTG GAG-3'
Va6	5'-CTG TTC CAG CTG GAT GGG ATT GCG GGT GAT GCT AAG ACT ACA-3'
Va7	5'-CTG TTC CAG CTG GAT GGG TCT AAT GTG GCC GAG AAA GTG ATT-3'
Va8	5'-CTG TTC CAG CTG GAT GGG AAT GGA GAT GGA GAC TC(AC) GTG ACC-3'
Va10	5'-CTG TTC CAG CTG GAT GGG TGG GTG AAA GGA CAG CAA GTG CAG-3'
Va11	5'-CTG TTC CAG CTG GAT GGG TGG GTG AGA GGA GAT CAG GTG GAG-3'
Va12	5'-CTG TTC CAG CTG GAT GGG TCA TGG AGC CTT GCC AAG ACC ACC-3'
Va13	5'-CTG TTC CAG CTG GAT GGG ATG AGC CAA GGC GAG CAG GTG GAG-3'
Va14	5'-CTG TTC CAG CTG GAT GGG ACC AGC ATG GCC CAG AAG GTA ACA-3'
Va15	5'-CTG TTC CAG CTG GAT GGG GTG GCT GGC AAG ACC CAA GTG GAG-3'
Ca	5'-CTGGTACACAGCAGGTTCCGGGATTCTGGATGT-3'

PCR conditions were 94° (amplification), 55° (annealing), 72° (extension); 30 sec/cycle; 30 cycles.