

Supporting Information

Henn *et al.* 10.1073/pnas.0801184105

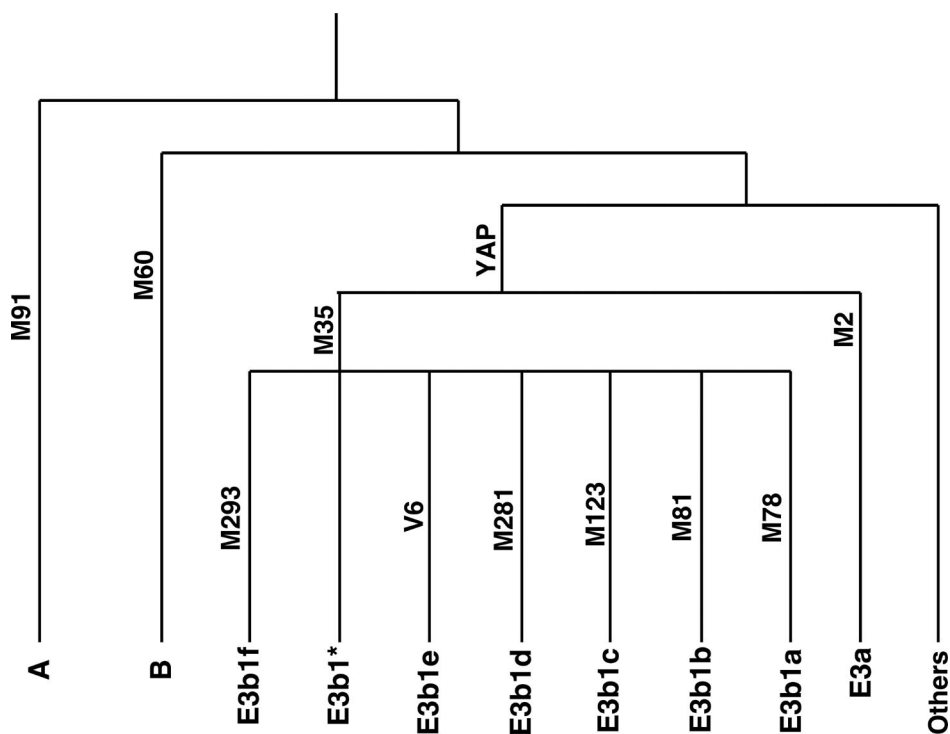


Fig. S1. Human Y-chromosome phylogeny for haplogroups common in African populations. Haplogroup names are indicated at the bottom of each branch. A defining unique event polymorphism (UEP) for each haplogroup is indicated alongside the appropriate branch. The reported M293 polymorphism defines the new haplogroup E3b1f-M293 that is derived from E3b1-M35, as shown.

Other Supporting Information Files

[Dataset S1\(XLS\)](#)