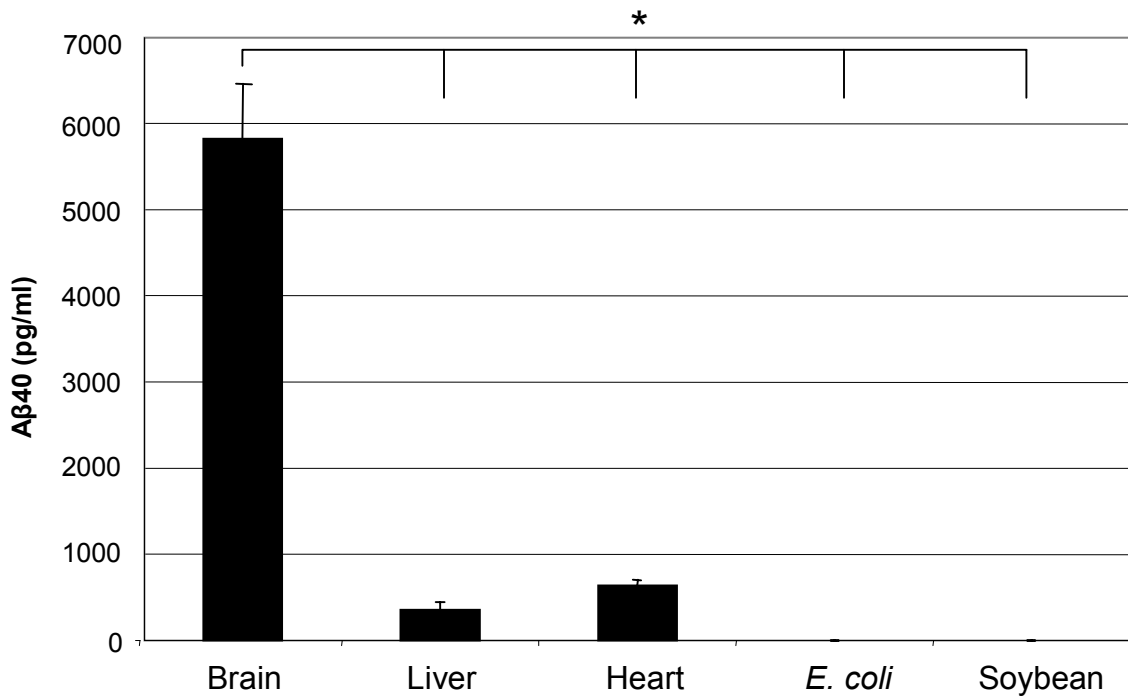


Supplemental Figure 1



Effect of complex lipid extracts on the cleavage efficiency of the C100FLAG substrate. Complex lipid mixtures were used at a total lipid concentration of 1.25 mg/ml. Aβ40 production was measured by ELISA. Error bars represent standard errors of the mean. Data were statistically analyzed by One-way ANOVA with Tukey-Kramer post-testing. Statistical significance of $p < 0.001$ (*) is indicated.