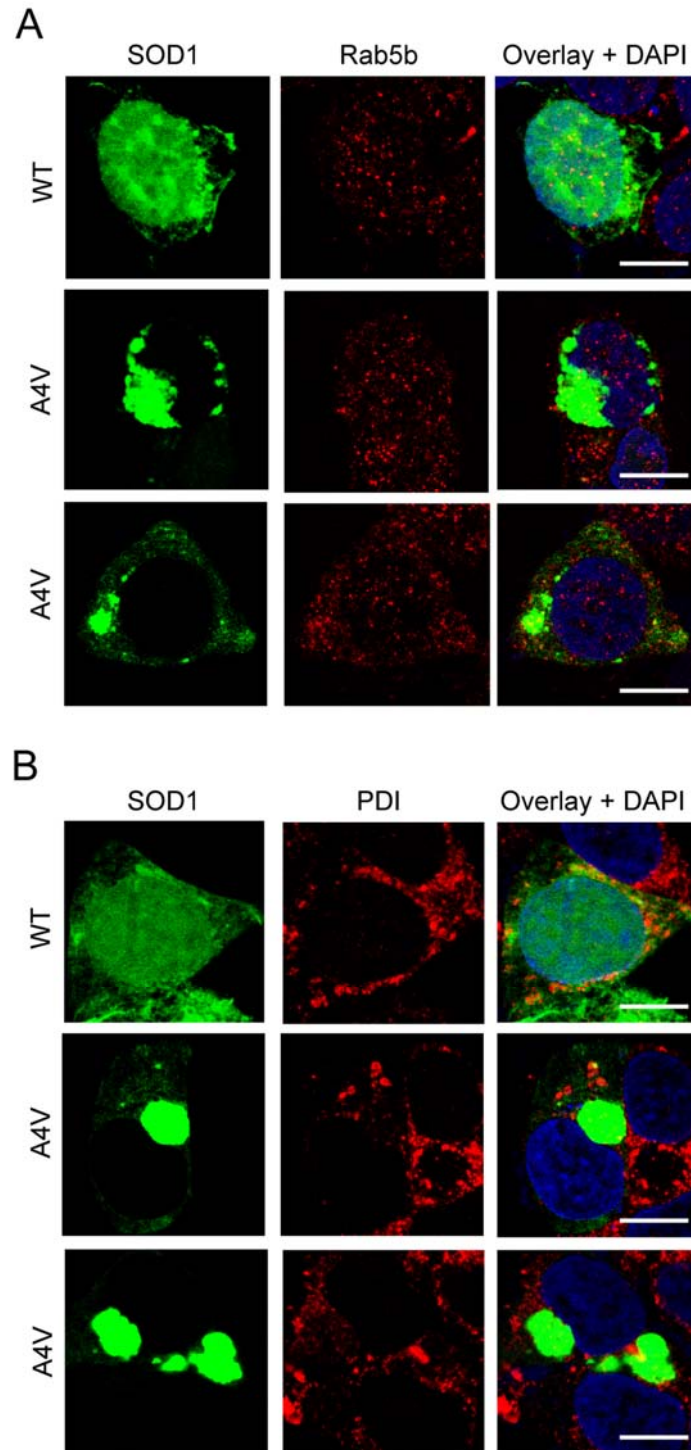


Supplementary Figure 1



Supplementary Figure 1. Mutant SOD1 inclusions show no co-localization with endosome or endoplasmic reticulum. (A) Forty-eight hours after transfection with WT- or A4V-GFP, HEK293 cells were immuno-stained for the endosomal marker Rab5b and analyzed by confocal microscopy. (B) Forty-eight hours after transfection with WT- or A4V-GFP, HEK293 cells were immuno-stained with the ER marker PDI and analyzed by confocal microscopy. All scale bars are 10 μ m.