

Supplemental data

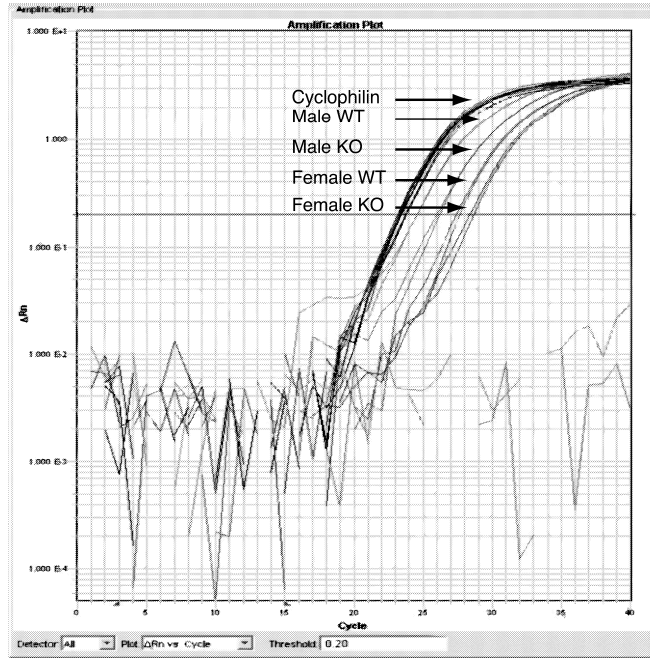
Figure Legend

Supplemental Figure 1. Representative amplification curves for real-time PCR analyses of CB1R expression.

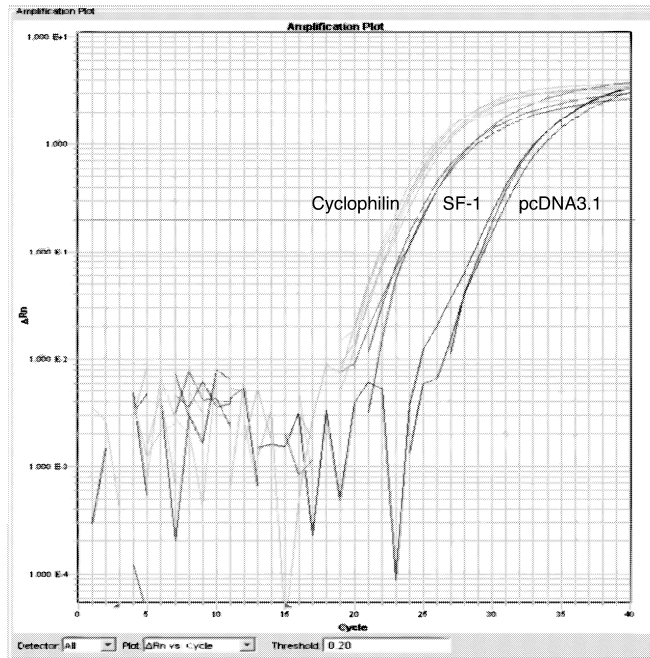
A. A representative amplification curve for real-time PCR analysis of CB1R transcript levels in SF-1/eGFP neurons isolated from WT and SF-1 KO mice. At E16.5, RNA was isolated from FACS-sorted SF-1/eGFP-positive neurons and analyzed by real-time PCR assays.

B. A representative amplification curve for CB1R real-time PCR in Neuro2A cells. Neuro2A cells were transiently transfected with either pcDNA3.1 or with a SF-1 expression plasmid. After 48hrs, the levels of CB1R transcripts were measured by real-time PCR assays as described in Materials and Methods.

A



B



Supplemental Figure 1