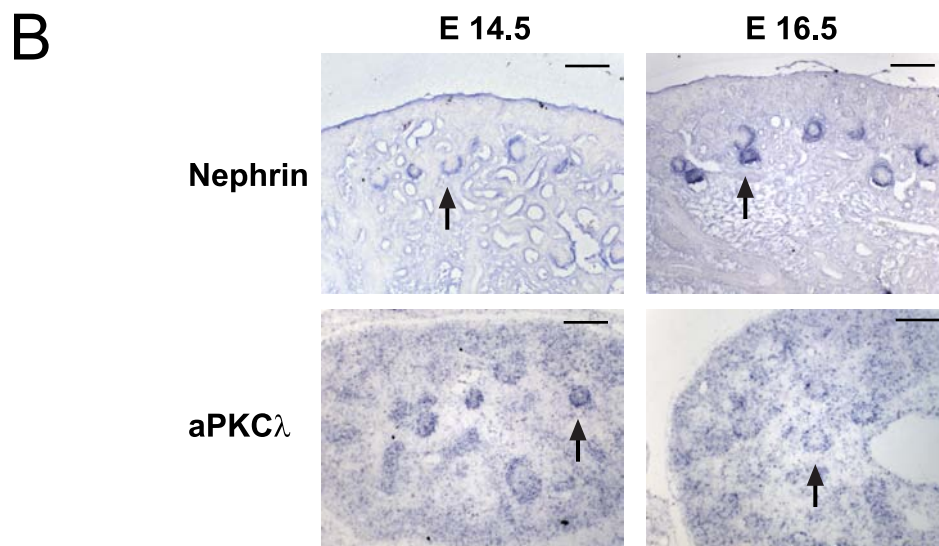
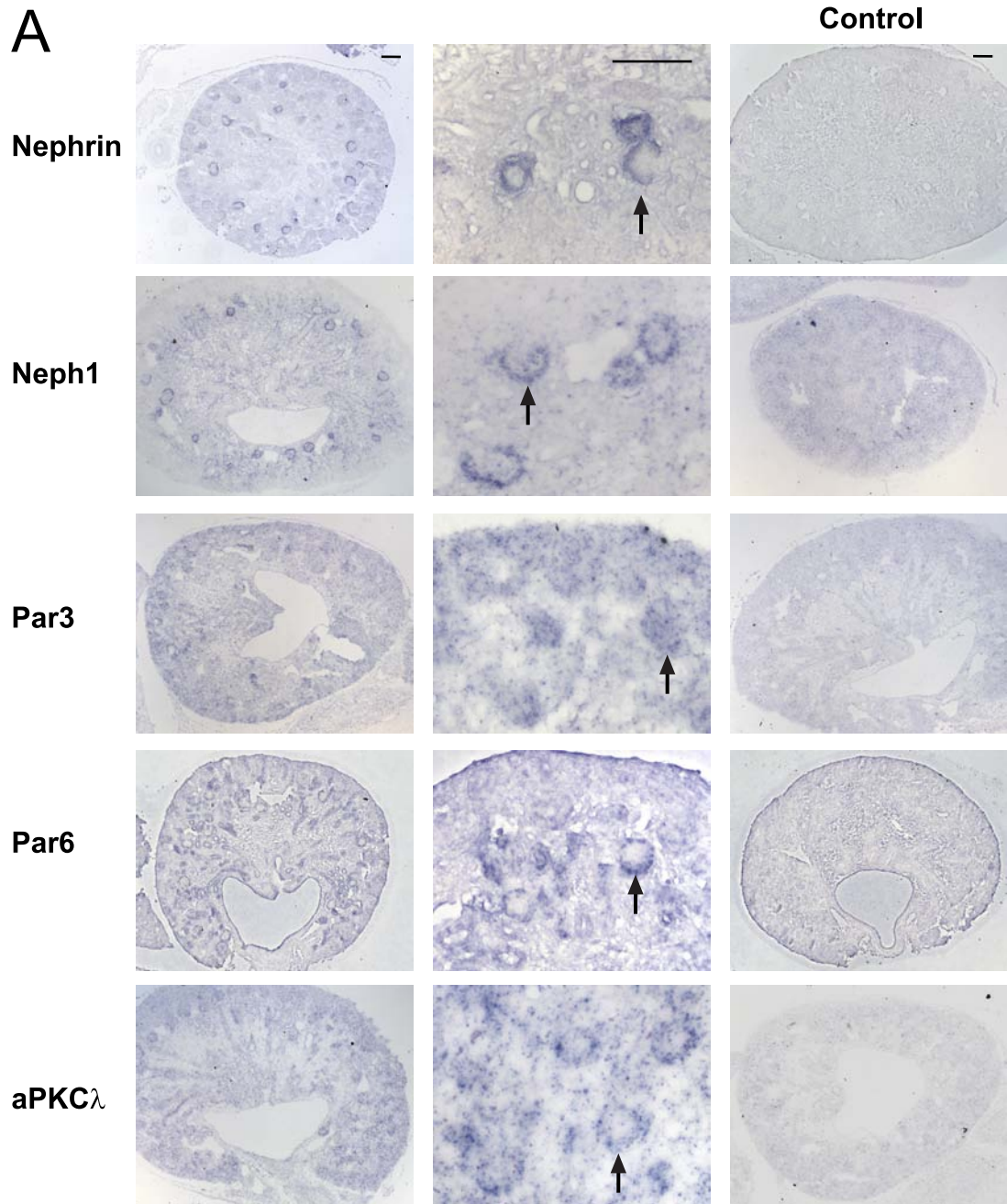


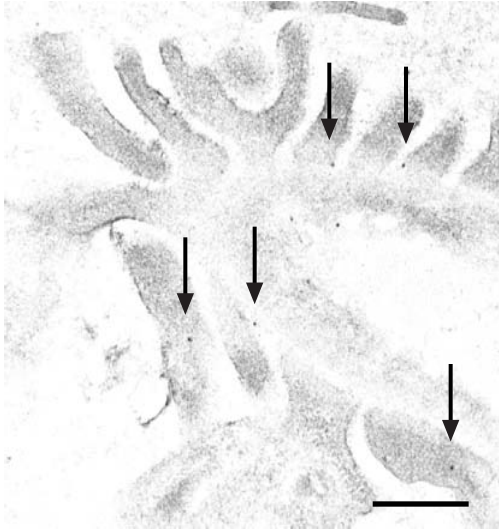
Supplemental figure 1



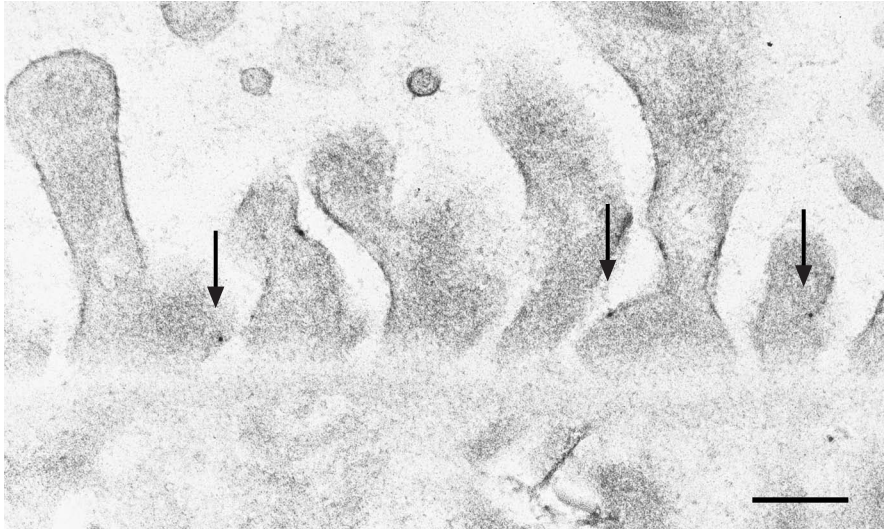
Supplemental fig. 1. Nephrin, Neph1 and Par3, Par6, aPKC λ exhibit similar glomerular expression patterns during kidney development. A, *in situ* hybridizations of E16.5 mouse kidneys were performed using antisense probes to the mRNAs indicated. Sense probes served as controls. Like Nephrin and Neph1, Par3, Par6 and aPKC exhibited glomerular staining (arrows). B, *in situ* hybridizations showing expression of Nephrin and aPKC λ (arrows) on E14.5 and E16.5. Scale bars represent 100 μ m.

Supplemental figure 2

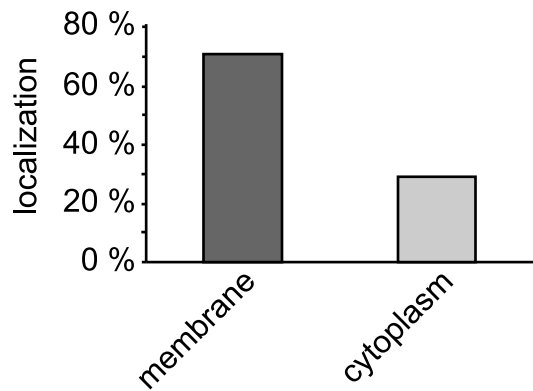
A



B



C



Supplemental fig. 2. Par3 expression in podocyte foot processes. A, B, immunogold electron microscopy of rat kidney sections showed localization of Par3 mainly membrane-associated at the slit diaphragm as well as in the cytoplasm. C, quantitative analysis of the localization of Par3 in podocyte foot processes. Scale bars represent 500 nm (A) and 200 nm (B).