

SUPPLEMENTAL MATERIAL

Figure S1. Rac1 protein levels are unaffected by Dck1 expression levels. Cell extracts from indicated strains were analyzed by SDS-PAGE followed by immunoblotting and probing with affinity purified Rac1 polyclonal sera. Left panel shows total protein by Ponceau S staining and right panel Rac1. Similar results were observed in 2 independent experiments.

Figure S2. Dck1 and Rac1 are required for normal filamentous growth on Spider solid media. (A) Wild type (PY82) cells, *dck1Δdck1Δ* (PY706) cells, *dck1Δdck1Δ PDCK1DCK1* (PY710) cells, *rac1Δrac1Δ* (PY191) cells and *rac1Δrac1Δ PRAC1RAC1* (PY275) cells were spotted on Spider media containing agar and images were taken after 6 days. Bar, 1 mm. (B) Overnight cultures of indicated strains were suspended in Spider media and incubated for 2 h at 37°C. Cells were fixed and images taken. Similar results were observed in 3 independent experiments. Bar, 10 μm.

Figure S3. Dck1 and Rac1 are required for normal filamentous growth on N-acetyl glucosamine (GlcNAc) solid media. (A) Wild type (PY82) cells, *dck1Δdck1Δ* (PY706) cells, *dck1Δdck1Δ PDCK1DCK1* (PY710) cells, *rac1Δrac1Δ* (PY191) cells and *rac1Δrac1Δ PRAC1RAC1* (PY275) cells were spotted on GlcNAc media containing agar and images were taken after 6 days. Bar, 1 mm. (B) Indicated strains were starved for 1 h in water, suspended in GlcNAc media and incubated for 4 h at 37°C. Cells were fixed and images taken. Similar results were observed in 2 independent experiments. Bar, 10 μm.

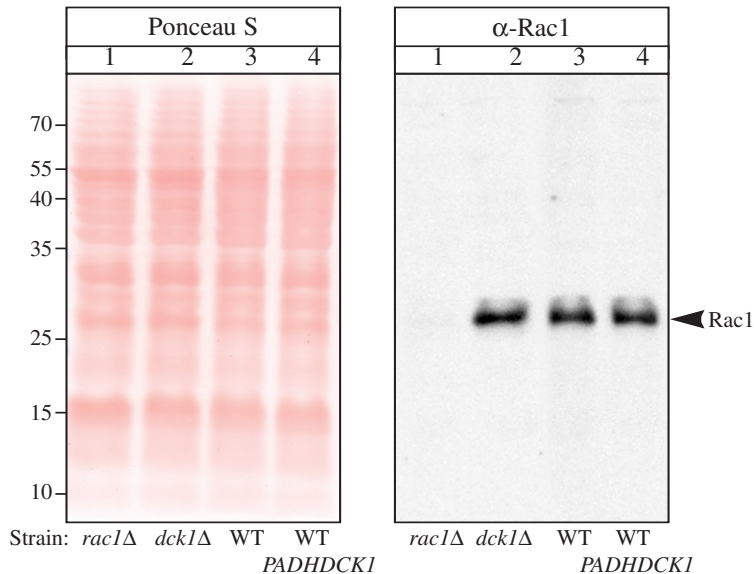


Figure S1

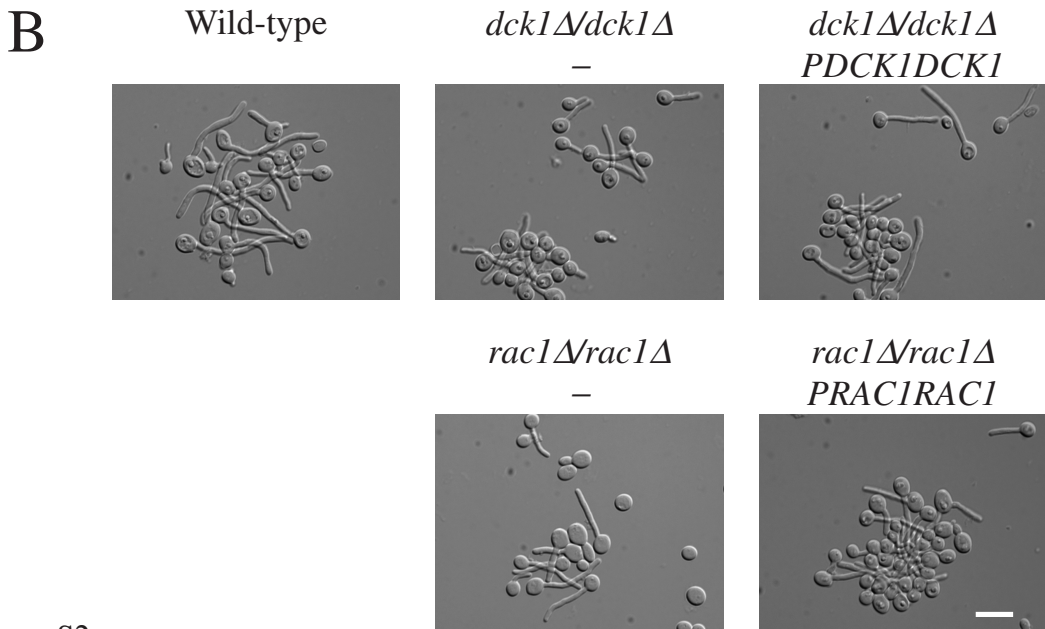
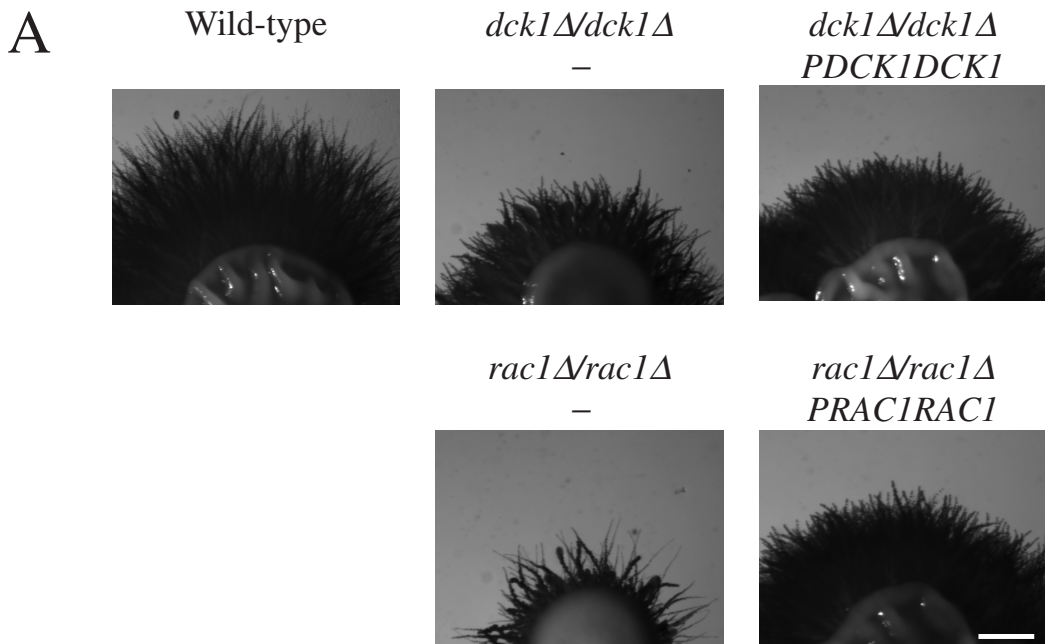


Figure S2

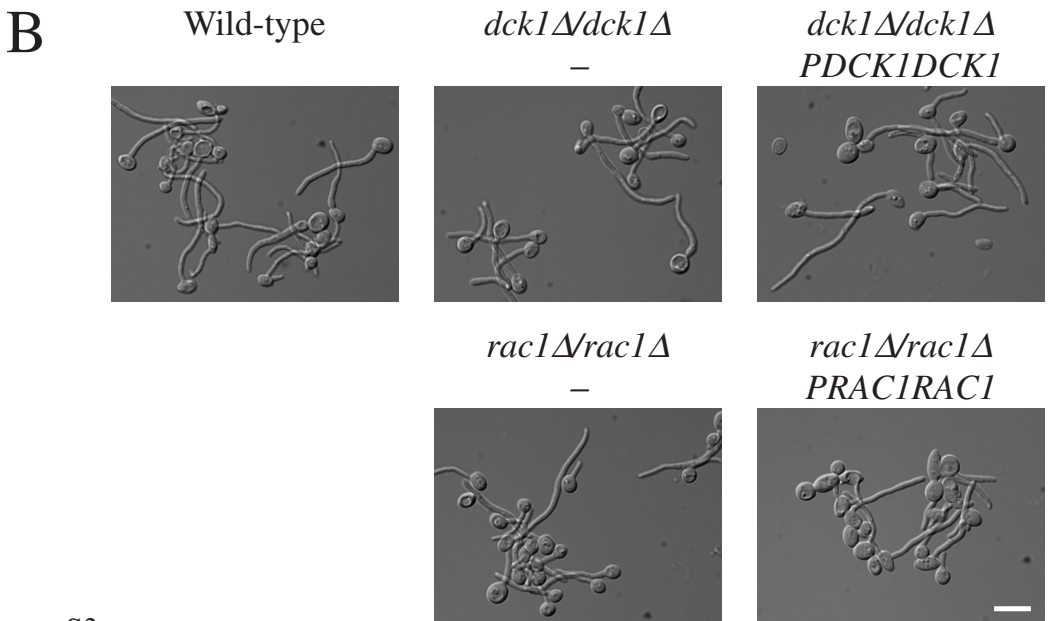
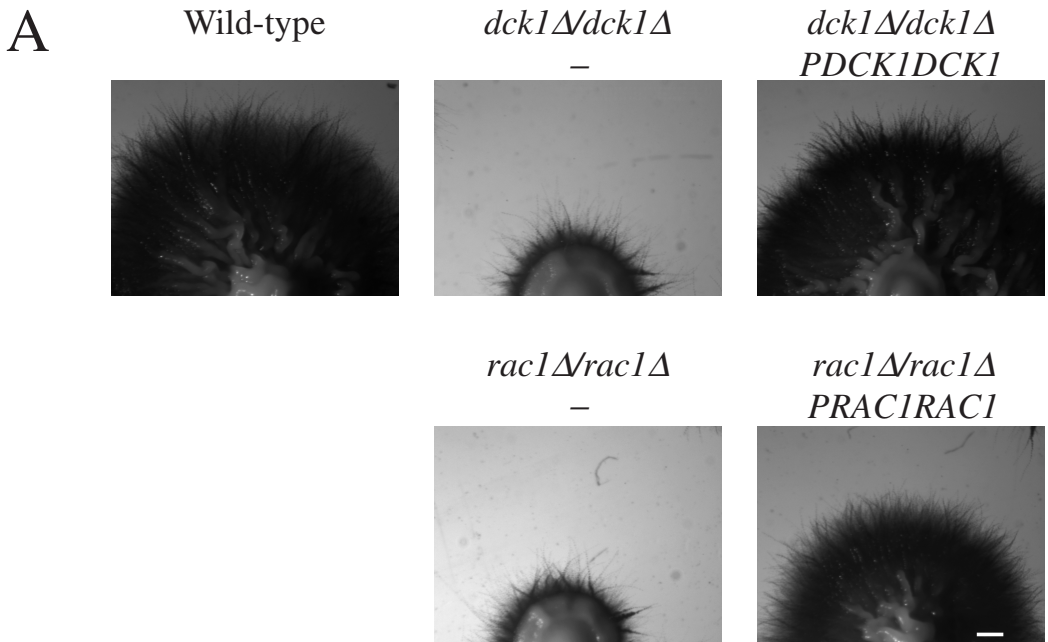


Figure S3