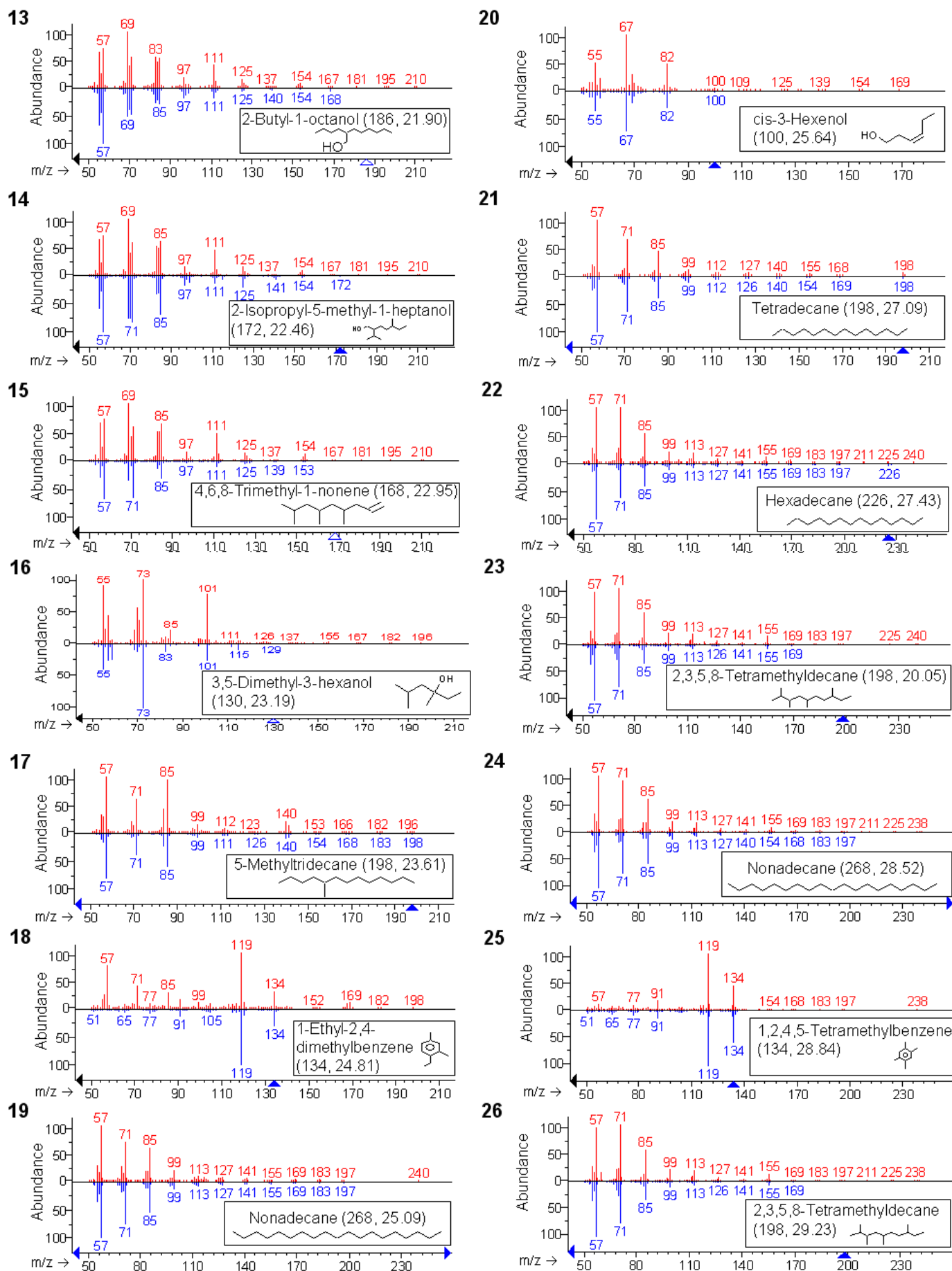
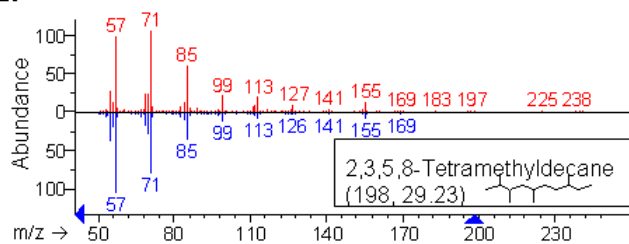


**Supplemental Figure S5.** Mass spectra of various metabolic compounds from leaf extracts of pepper plants. Compounds were identified by comparing the mass spectra of leaf extracts (red lines) with those from the National Institute of Standards and Technology (NIST) mass spectral library (blue lines). Compound names, molecular weights, retention times and structures are shown in the boxes.

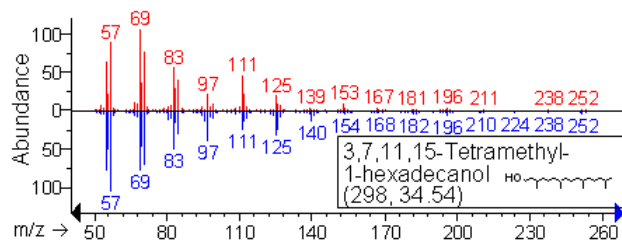


Supplemental Figure S5 (continued). Choi et al.

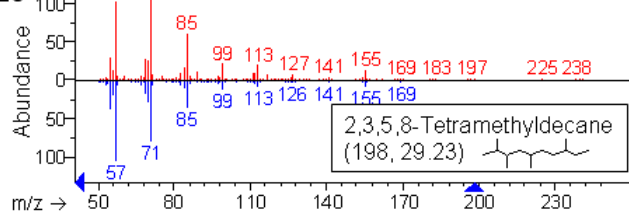
27



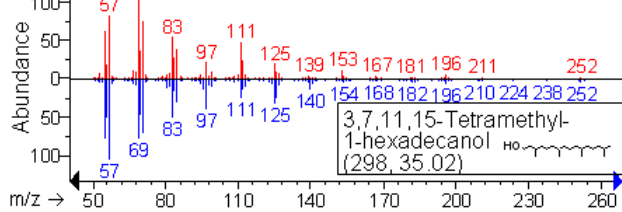
34



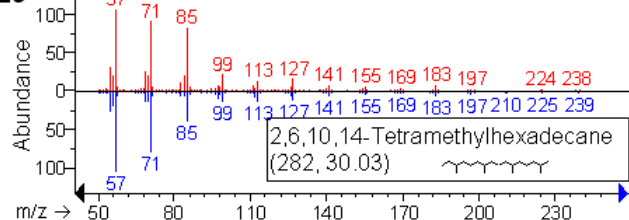
28



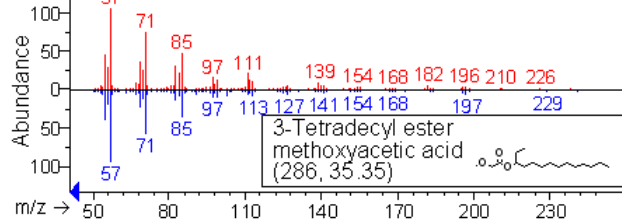
35



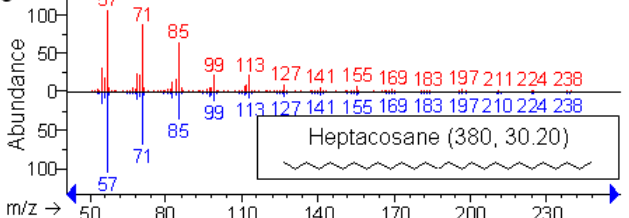
29



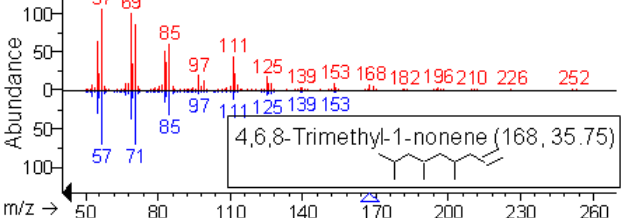
36



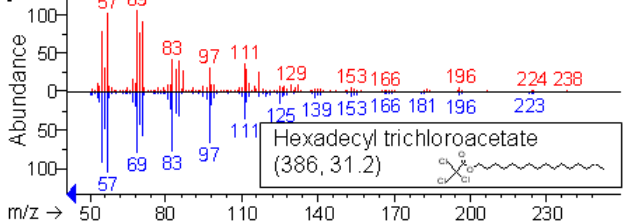
30



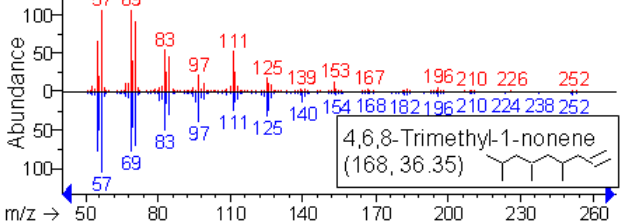
37



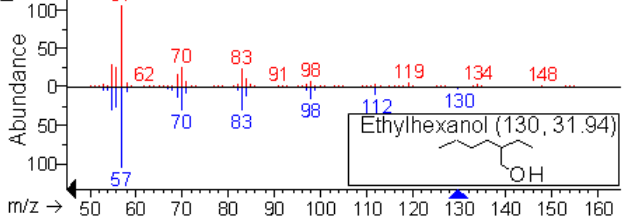
31



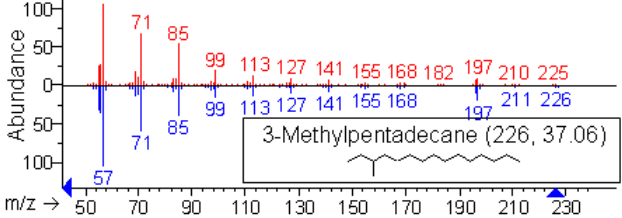
38



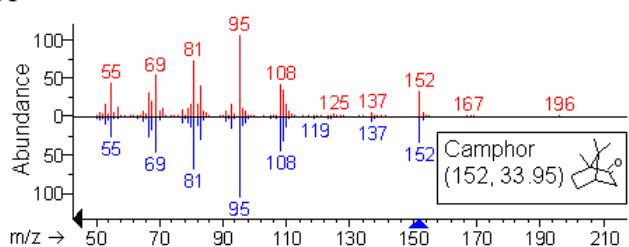
32



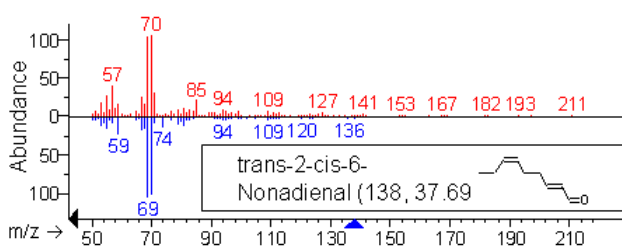
39

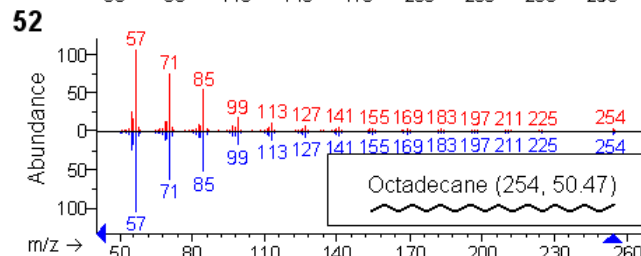
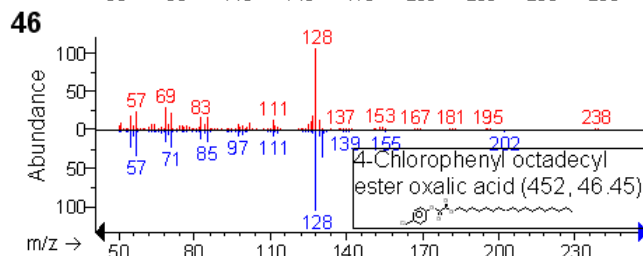
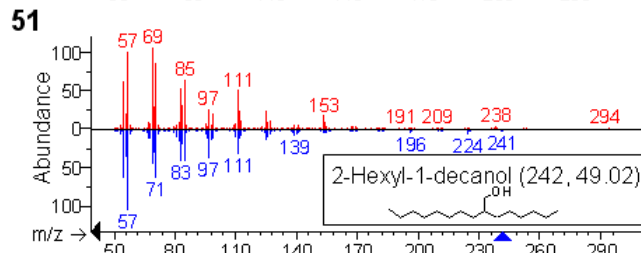
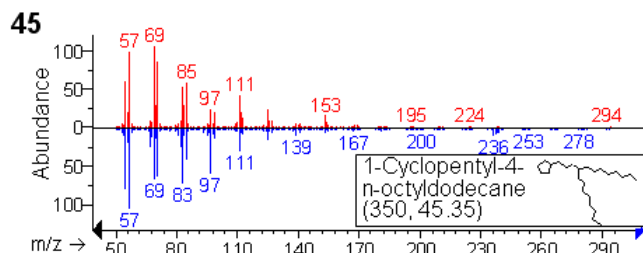
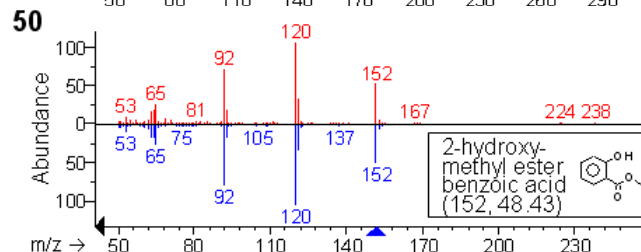
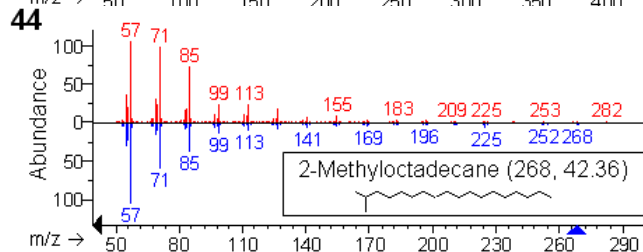
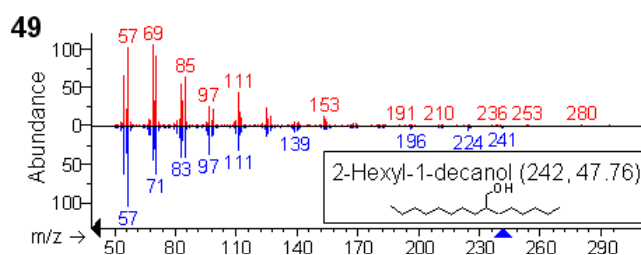
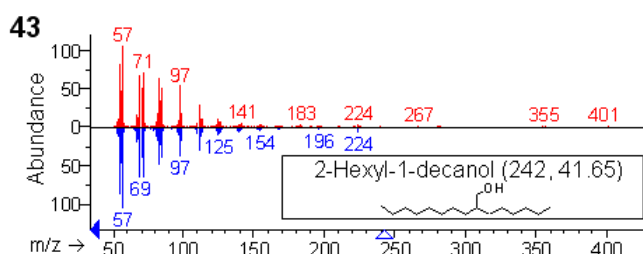
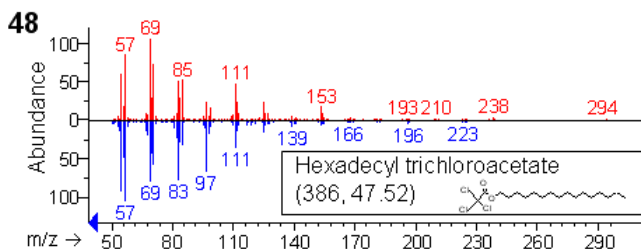
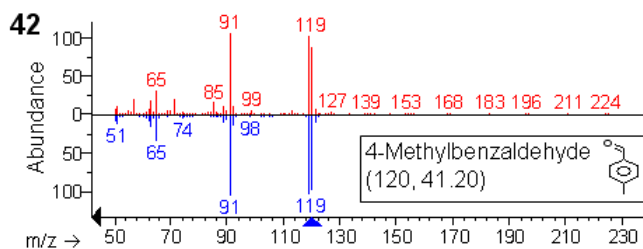
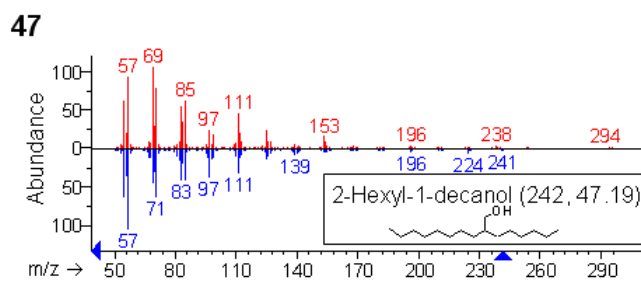
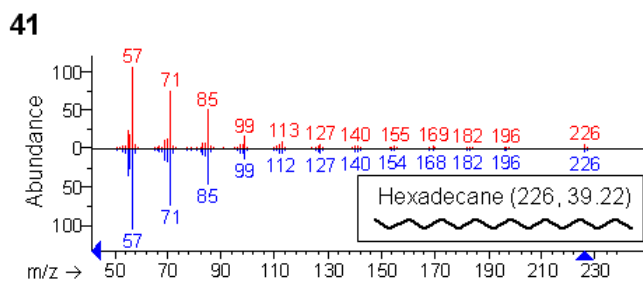


33



40





Supplemental Figure S5 (continued). Choi et al.