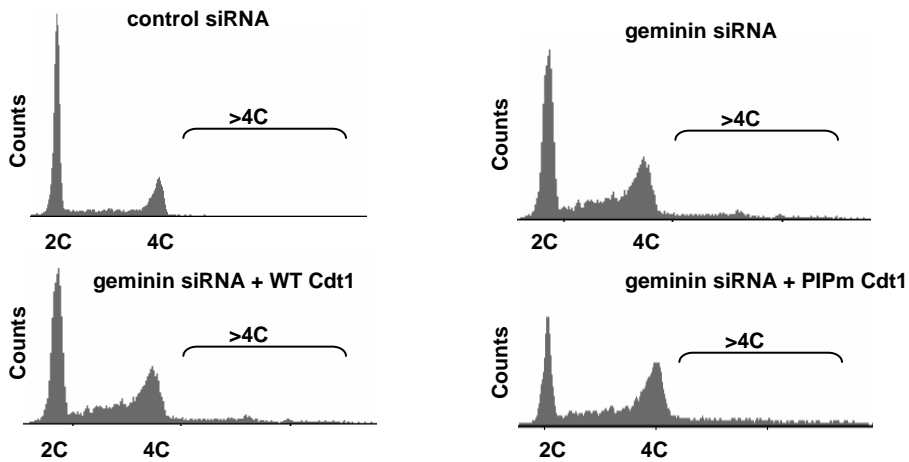
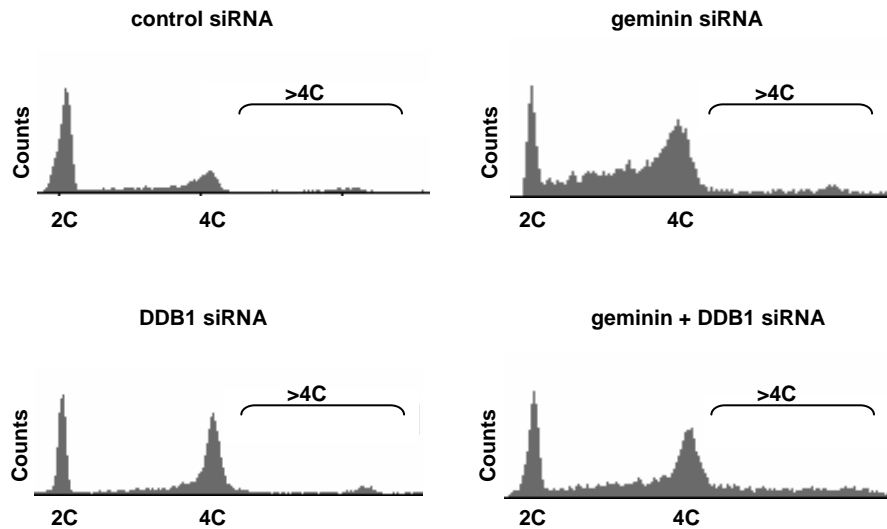


A



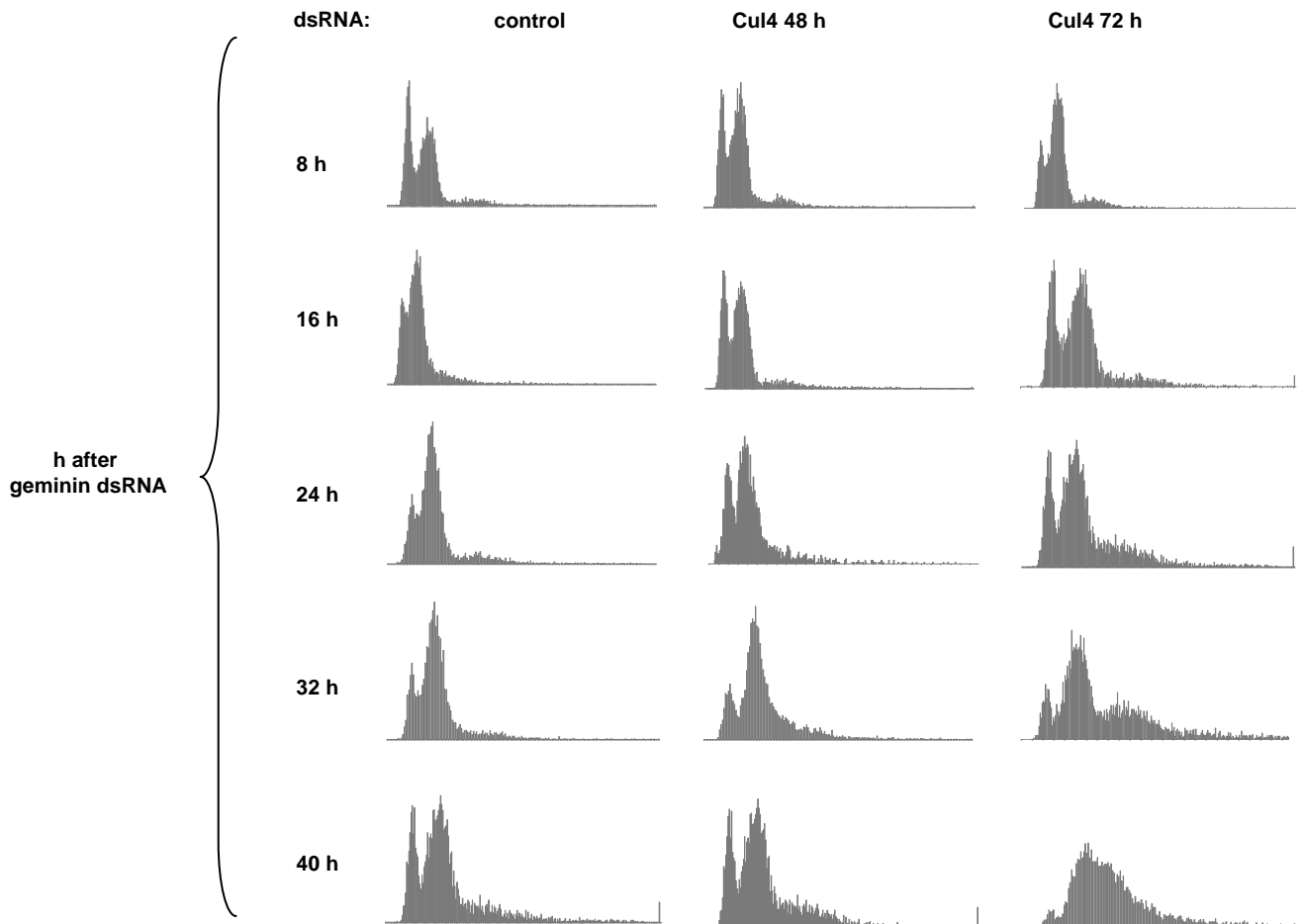
**Supplemental Figure 1A. Representative histograms for Figure 5A.** HCT116 cells depleted of geminin and infected with the indicated adenoviruses exactly as in Figure 3E were evaluated for rereplication by flow cytometry as in Figure 1A. The percentage of the total population harboring DNA content greater than 4C is reported.

B

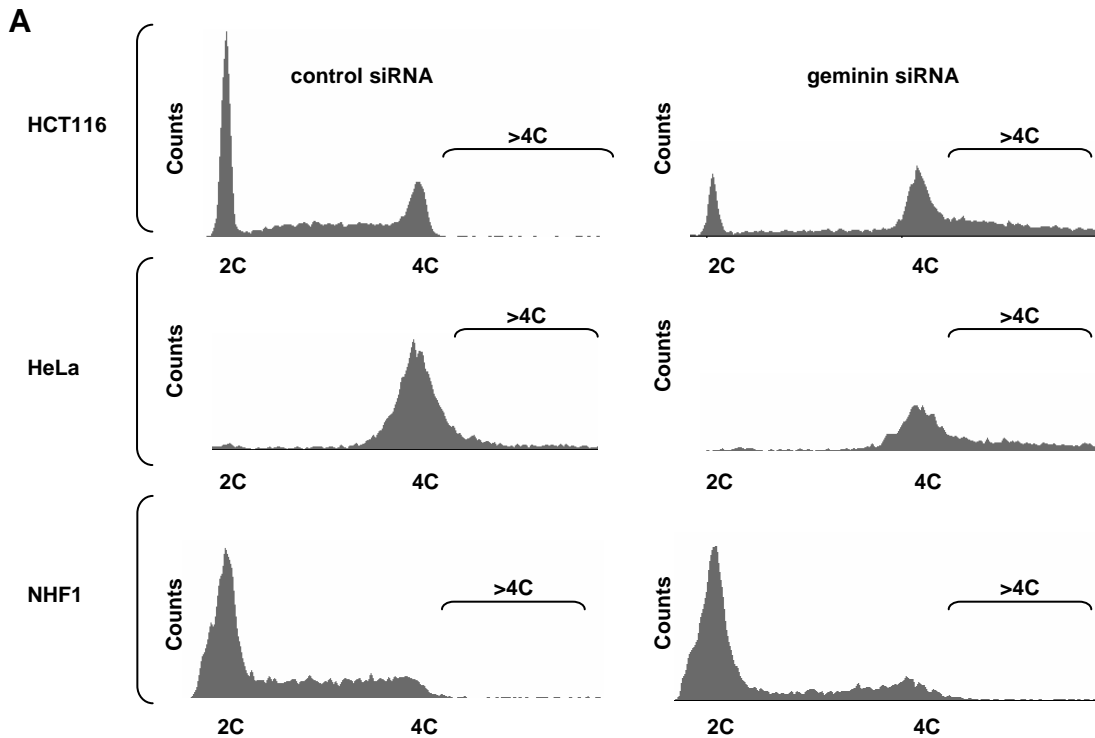


**Supplemental Figure 1B. Representative histograms for Figure 5B.** HCT116 cells depleted of DDB1 and geminin exactly as in Figure 3A were evaluated for rereplication by flow cytometry as in Figure 1A.

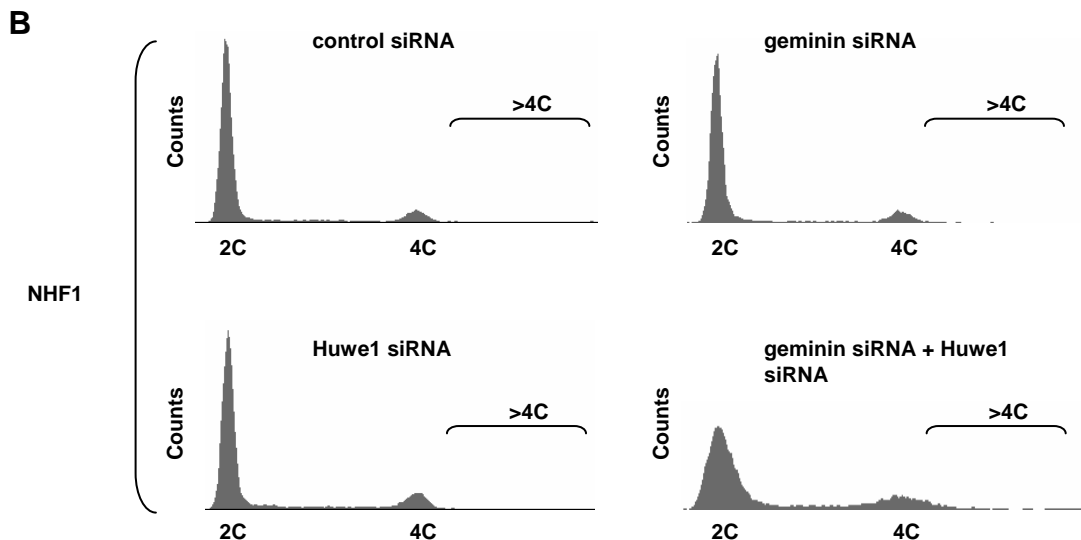
C



**Supplemental Figure 1C. Representative histograms for Figure 5C.** *Drosophila* S2 cells were treated with Cul4 dsRNA every 24 h for either 48 h or 72 h prior to treatment with geminin dsRNA. Samples were collected every 8 h post geminin dsRNA treatment. DNA content was measured as in Figure 2A, and the percentage of the total population harboring DNA content greater than 4C is reported.



**Supplemental Figure 2A. Representative histograms for Figure 6B.** HCT116, HeLa, and NHF1 cells were transfected with geminin siRNA for 48 h and evaluated by immunoblotting with the indicated antibodies. In order to prevent premature mitosis, HeLa cells were treated with nocodazole for 24 h prior to harvest. The percentage of cells from Figure 6A with greater than 4C DNA content determined by flow cytometry as in Figure 1A.



**Supplemental Figure 2B. Representative histograms for Figure 6D.** NHF1-tert cells were transfected with Huwe1 siRNA for 24 h then transfected with geminin siRNA for an additional 48 h. The percentage of cells from Figure 6C with greater than 4C DNA content determined by flow cytometry as in Figure 1A.