

Supporting Information

Fernandez and Morris 10.1073/pnas.0803851105

SI Text

These two figures illustrate the painted treatments used in Experiments 1 and 2. [Fig. S1](#) shows the treatments for the 20th

and 80th percentiles of Sc expression, whereas [Fig. S2](#) represents the 50th percentile Sc expression used in testing female preferences for Sc patterned males.



Fig. S1. Experiment 1 treatments. (A) *Xiphophorus cortezi* male painted with Dr. Naylor's Blu-Kote dye to represent the small Sc treatment. Small Sc treatment area was calculated to approximate the 20th percentile of Sc phenotypic expression for wild-caught males at Cebolla. (Scale bar, 5 mm.)

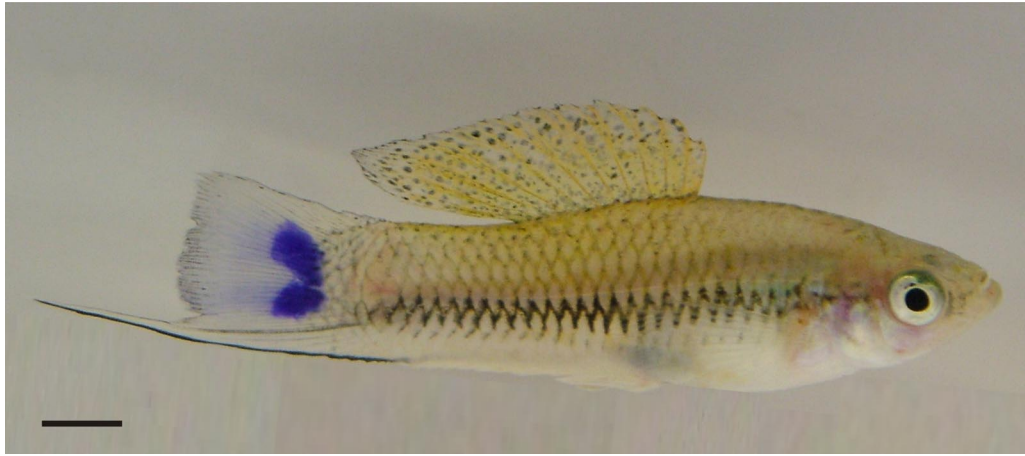


Fig. S1. (B) The same *X. cortezi* male with a representative painting of the large Sc treatment, which was calculated to approximate the 80th percentile of Sc phenotypic expression for wild-caught males at Cebolla. (Scale bar, 5 mm.)

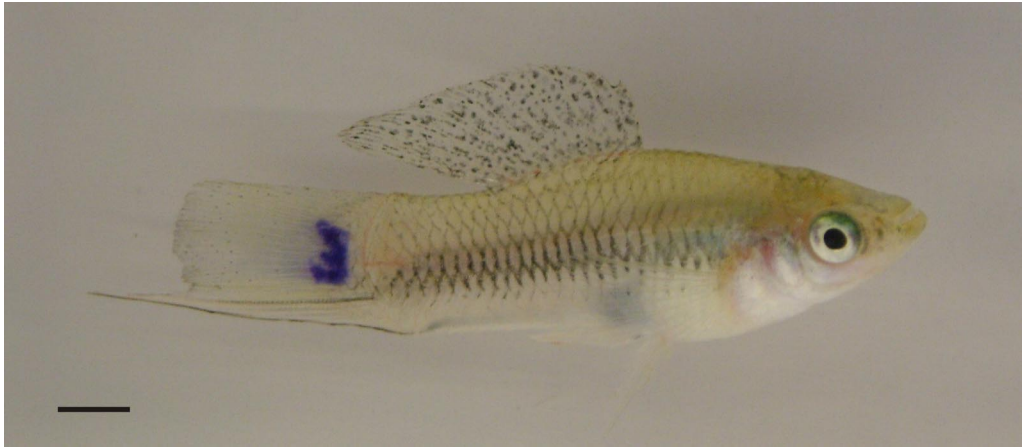


Fig. S2. Experiment 2 treatment. *X. cortezi* male with a representative example of the average-size Sc treatment. The average-size treatment was determined for each of the three populations tested in Experiment 2 and was calculated to approximate the 50th percentile Sc expression of wild-caught males from each location. During both Experiment 1 and 2, care was taken to minimize variations in perimeter length and total number of contiguous areas. (Scale bar, 5 mm.)